

Portland Place
Marylebone, W1B

CHESTERTONS





A beautifully designed and newly refurbished apartment set within a very exclusive block.

The apartment offers a double bedroom, bathroom and a separate washroom, with the master bedroom benefiting from a well-appointed en-suite bathroom.

- Newly refurbished
- One Bedroom
- One Bathroom
- Lift
- Porter

£3,100 pcm

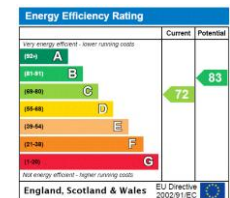
Additional tenant charges apply (fees apply to non-AST tenancies only)

Tenancy Agreement Fee: £300

References per Tenant/Guarantor: £60

Inventory check (approx. £100 – £250 inc. VAT)

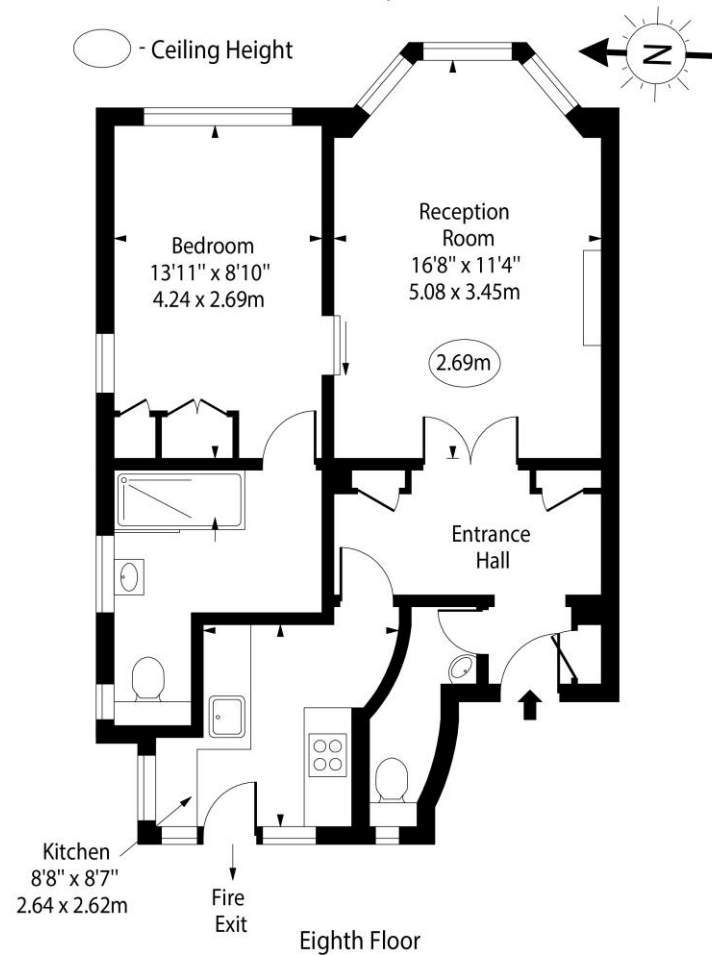
chestertons.co.uk/property-to-rent/applicable-fees



Deposit Required: Five weeks
Local Authority: Westminster
Council Tax Band: F
EPC Rating: C

Chestertons Marylebone

Portland Place, W1B



Approx Gross Internal Area 572 Sq Ft - 53.14 Sq M

For Illustration Purposes Only - Not To Scale

www.goldlens.co.uk

Ref. No. 016795E

Chesterton UK Services Limited trading as Chestertons for themselves and for the vendor of this property whose agents they are, give notice that (i) these particulars do not constitute any part of an offer or contract, (ii) all statements contained within these particulars are made without responsibility on the part of Chestertons or the vendor, (iii) whilst made in good faith, none of the statements contained within these particulars are to be relied upon as a statement or representation of fact, (iv) any intending purchasers must satisfy themselves by inspection or otherwise as to the correctness of each of the statements contained within these particulars, (v) the vendor does not make or give either Chestertons or any person in their employment any authority to make or give representation or warranty whatsoever in relation to this property. Wide angle lenses may be used. ©Copyright Chestertons | Chesterton Global Ltd | Registered Office 5th Floor, The Lantern, 75 Hampstead Road, London, NW1 2PL Registered Company Number 05334580.



This paper is
100% recyclable