



HEARNES

WHERE SERVICE COUNTS

Hightown Gardens, Ringwood, BH24 3EH

An idyllic, peaceful and private setting, established gardens to three sides and no chain, are just a few features of this impeccably presented, semi-detached bungalow.

Tucked away at the end of a quiet cul-de-sac, this property offers two well-proportioned bedrooms (one with built-in wardrobes), a modern, white family bathroom, a light and spacious sitting room with feature fireplace, kitchen and conservatory.

The kitchen is located at the rear of the bungalow and is accessed by an archway from the sitting room. It has been carefully planned to make good use of the space on offer. It is fitted in a range of modern, wall & floor mounted units with contrasting worktops and splashbacks. Built-in appliances include an oven and gas hob.

Further benefits include an entrance porch, gas central heating, double glazing and a very useful double glazed conservatory which overlooks the garden.

The gardens have been designed to be easy to maintain, being enclosed by fencing, mature trees shrubs and hedging. They extend to the front, side and rear. There are numerous vegetable/flower beds, a greenhouse and timber storage shed.

Access to the parking & garage is via a gate from the rear. Access to the front is by a gate and pathway.

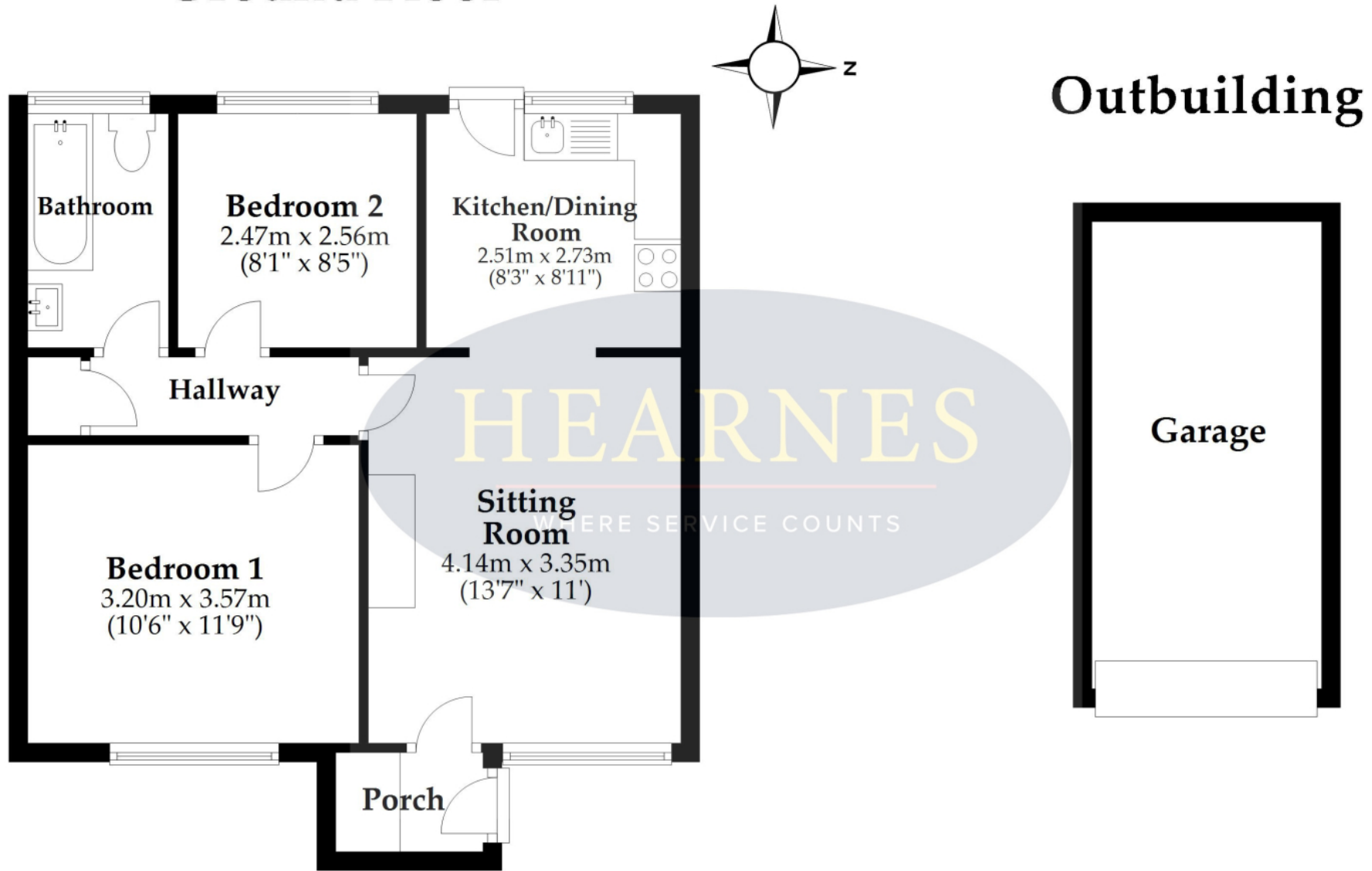
Local Authority: New Forest

Council Tax Band: B

Energy Performance Certificate: E

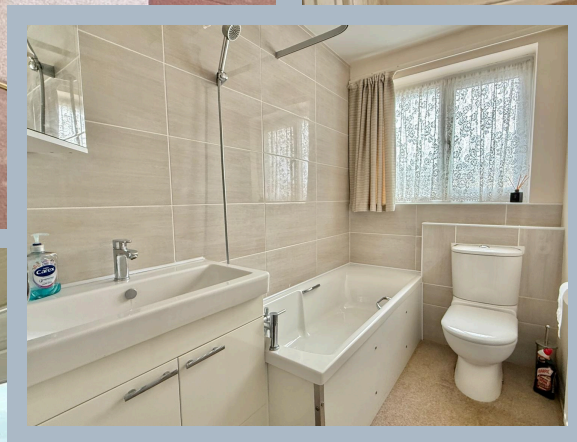


Ground Floor



Total area: approx. 48.9 sq. metres (525.9 sq. feet)

This plan is not to scale and is for general guidance only. LJT Surveying Ltd Ringwood
Plan produced using PlanUp.





www.hearnes.com

52-54 High Street, Ringwood, Hampshire

Tel : Email : anthony@hearnes.com

OFFICES ALSO AT: BOURNEMOUTH, FERNDOWN, POOLE & WIMBORNE