



2 Podolica Grove, Whitehouse
£440,000



2 Podolica Grove

Whitehouse, Milton Keynes

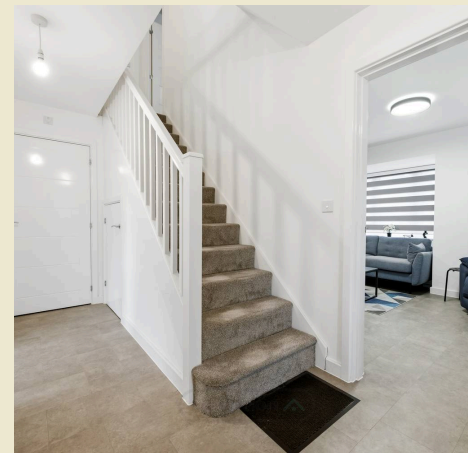
Council Tax band: C

Tenure: Freehold

EPC Energy Efficiency Rating: A

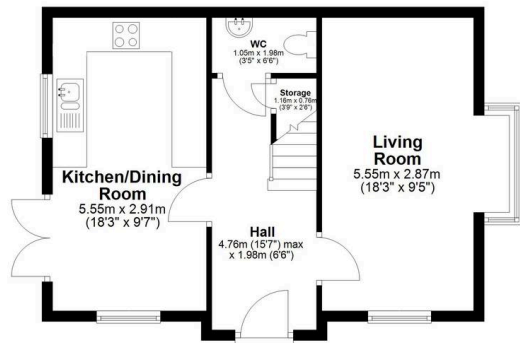
EPC Environmental Impact Rating: A

- Sought-after location in Whitehouse, Milton Keynes
- Modern three-bedroom semi-detached home
- Built by Crest Nicholson just 2 years ago
- Approx. 8 years remaining on NHBC warranty
- Downstairs cloakroom for added convenience
- Electric vehicle (EV) charging point installed
- Close to local schools, parks, and amenities
- Located within a popular and growing development
- Energy-efficient solar panels
- Fitted wardrobes to bedroom one and bedroom two
- Chain Free



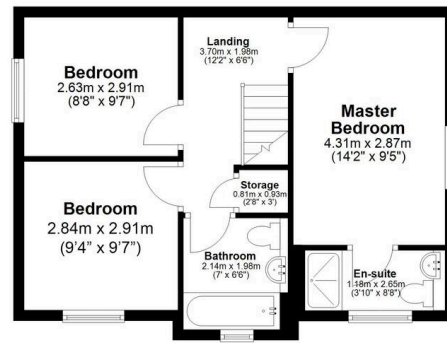


Total area: approx. 85.8 sq. metres (923.4 sq. feet)



Ground Floor

Approx. 45.5 sq. metres (489.9 sq. feet)



First Floor

Approx. 40.3 sq. metres (433.5 sq. feet)
(excluding En-suite)

For Illustration Purposes Only - Not To Scale

This floor plan should be used as a general outline for guidance only and does not constitute in whole or in part an offer or contract. Any intending purchaser or lessee should satisfy themselves by inspection, searches, enquiries and full survey as to the correctness of each statement. Any areas, measurements or distances quoted are approximate and should not be used to value a property or be the basis of any sale or let. Crestviewimage.uk



Elevation

Elevation Estate Agents, Beechwood House - MK5 8FT

01908
231551 • residential@elevationestateagents.com • www.elevationestateagents.com/

