



Earl's Court Square, SW5

£4,500 Per calendar month

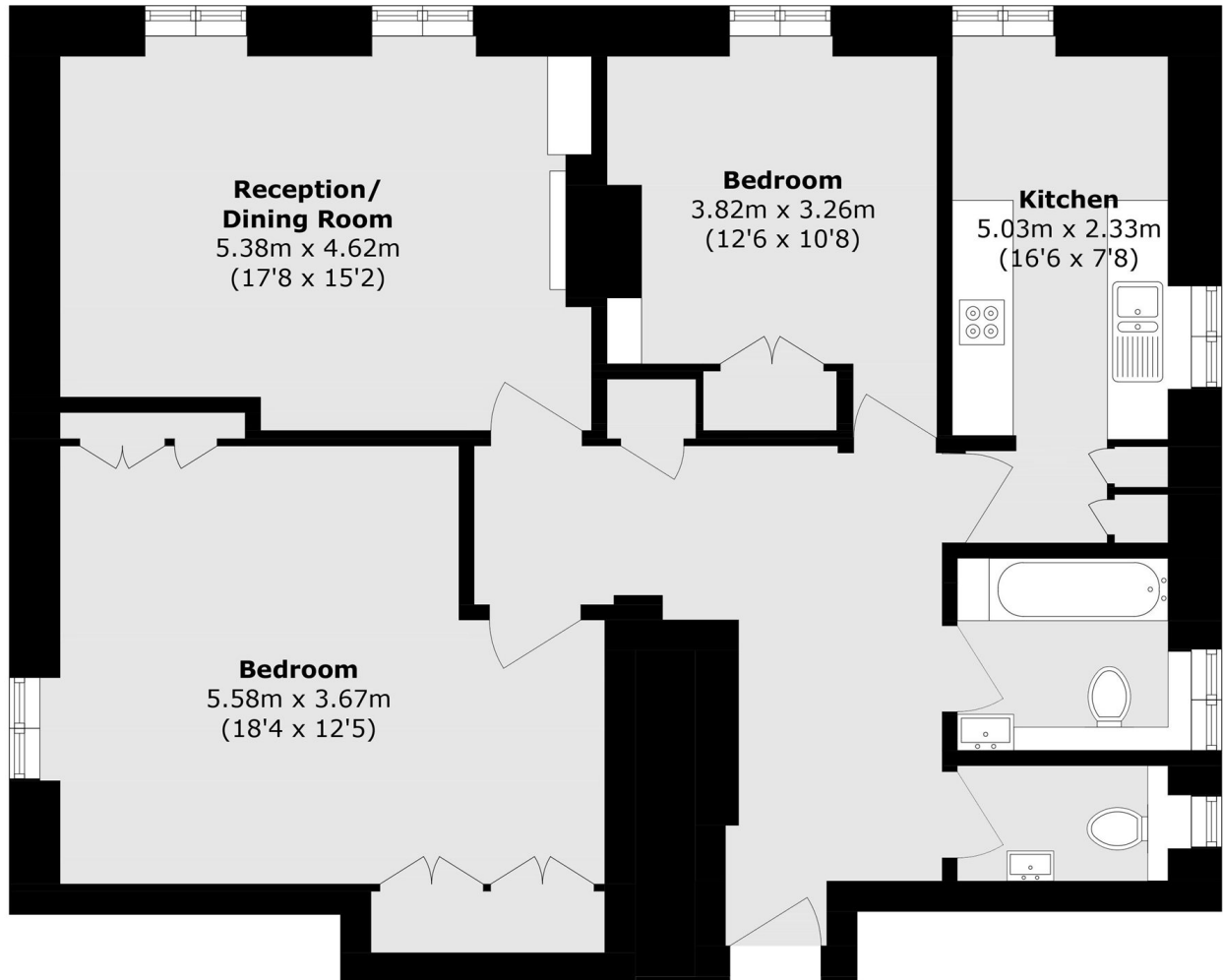
A beautifully finished and well maintained two bedroom flat situated on the third floor of a Georgian building with a lift. The flat is looking onto Earl's Court Square and has natural light throughout.

Earl's Court Square is conveniently positioned between Earl's Court Road and Warwick Road, offering close proximity to a wide selection of shops, restaurants, and bars. The nearest Underground station, Earl's Court, provides excellent transport links into central London.

Features

- Two Bedrooms
- One Bathroom
- Lift
- Beautifully Finished
- Natural Light
- Communal Garden

Earl's Court Square, London, SW5



Third Floor

Total area (approx.): 91.2 sq. m (981.6 sq. ft)