



THE
PROPERTY
QUARTER



22 Talisman Street, Hitchin, SG4 0EZ

£359,950



22 Talisman Street, Hitchin, SG4 0EZ

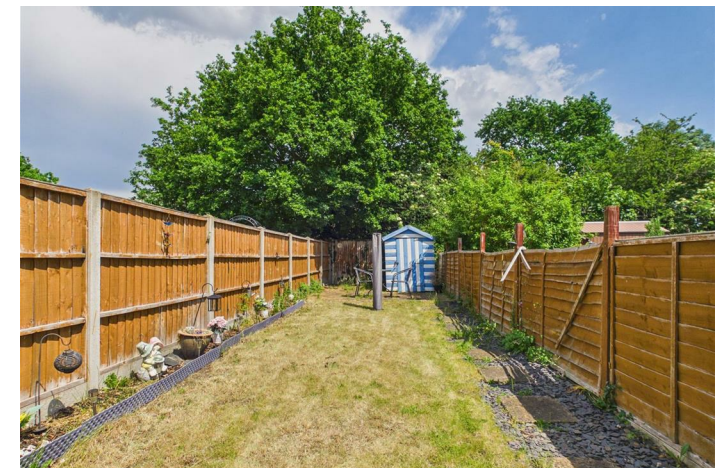
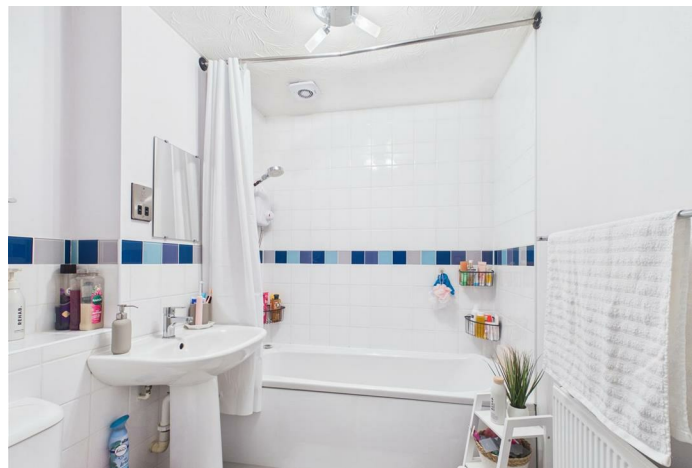
£359,950

We are extremely pleased to offer this delightful Two Double Bedroom Mid Terraced House situated in a quiet yet convenient cul-de-sac road within easy walking distance to Hitchin's mainline station. The light and modern interior accommodation has been kept in excellent decorative order throughout and other features include a sun room conservatory and good size west facing garden and off street parking too. Offered with no chain ahead, this property would make an ideal home for a young family or a first time purchase. An early viewing is strongly recommended.



Features

- Well Presented Terraced House
- Two Double Bedrooms
- Modern Kitchen & Bathroom
- Excellent Decorative Order Throughout
- Conservatory
- Large Rear Garden
- Off Street Parking
- No Chain

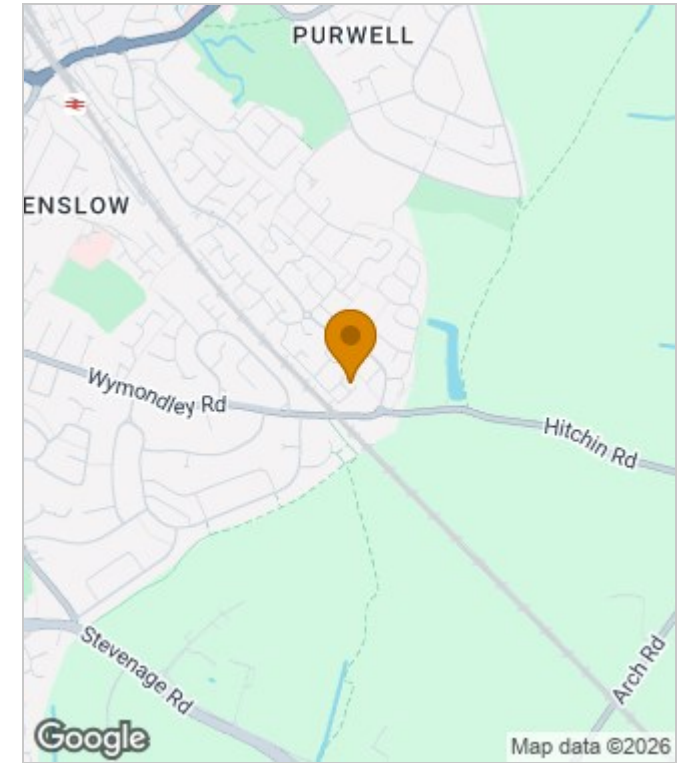


Council Tax Band: C
Floor Area: 602.78 sq ft
EPC Rating: D
Tenure: Freehold

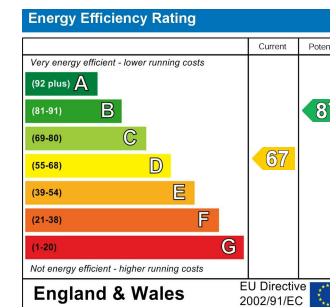
Floor Plans



Area Map



Energy Performance Graph



These particulars, whilst believed to be accurate are set out as a general outline only for guidance and do not constitute any part of an offer or contract. Intending purchasers should not rely on them as statements of representation of fact, but must satisfy themselves by inspection or otherwise as to their accuracy. No person in this firm's employment has the authority to make or give any representation or warranty in respect of the property.