

SNELLERS

ESTATE AGENTS



The Alders, TW13

£580,000

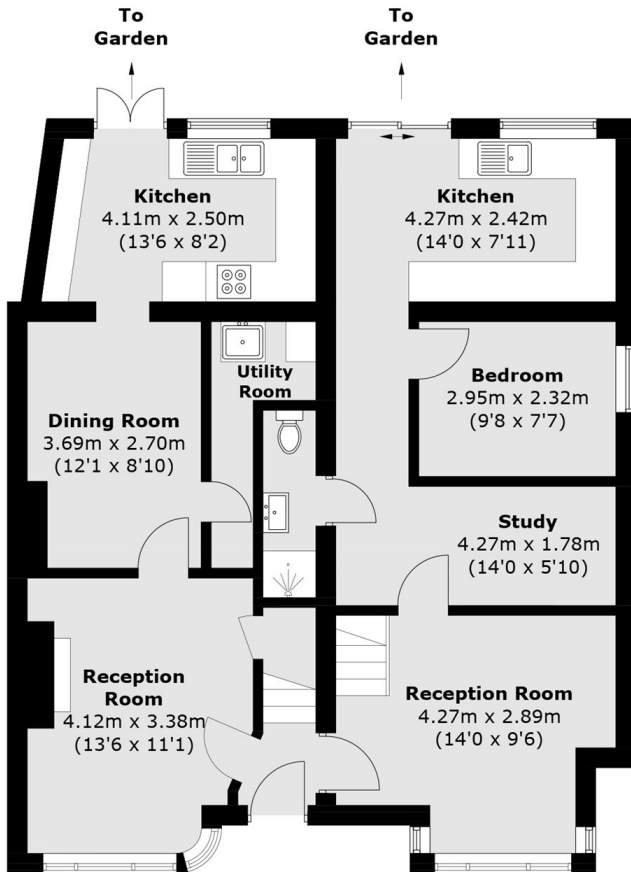
Offers over £580,000. Located on a corner plot, this double-fronted four/five-bedroom family home offers off-street parking, a garage, and a large private garden. It also has approved planning permission (P/2025/3063) to convert into two homes with parking, cycle, and refuse storage.

The Alders is a popular residential road located on the Hampton/Hanworth border and is conveniently situated for Bear Road recreational ground and an array of local shops including a Tesco Express, Boots Pharmacy and a Post Office. The property provides easy access onto the A316/M3 motorway leading into Central London and out onto the M25 motorway.

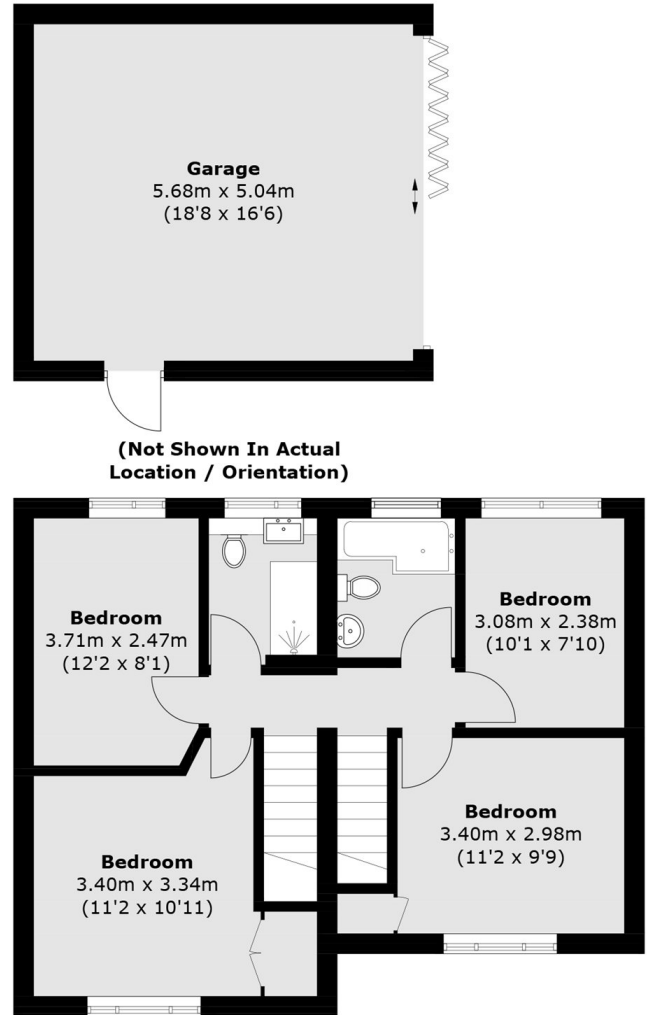
- Double Fronted • Corner Plot • Planning Approved •
- Four/Five Bedrooms • Garage & Parking • Large Private Garden •

SNELLERS

ESTATE AGENTS



Ground Floor



First Floor

Total area (approx.): 149.4 sq. m (1,608.2 sq. ft)
Garage: 29.5 sq. m (317.5 sq. ft)

Snellers Hampton Hill Sales
197-201 High Street
Hampton Hill
TW12 1NL
020 8783 0083
hamptonsales@snellers.co.uk

Energy Rating: C We aim to make our particulars both accurate and reliable. However they are not guaranteed; nor do they form part of an offer or contract. If you require clarification on any points then please contact us, especially if you're traveling some distance to view. Please note that appliances and heating systems have not been tested and therefore no warranties can be given as to their good working order