



27 Holystone Crescent

Newcastle Upon Tyne



27

27 Holystone Crescent, High Heaton, Newcastle Upon Tyne, NE7 7ET

Beautifully Presented & Tastefully Refurbished Semi-Detached Family Home Boasting Three Bedrooms, Family Bathroom, Generous Reception Room, Open Plan Kitchen/Diner, Driveway & Large Lawned Garden! This impressive semi-detached property is well positioned on Holystone Crescent, High Heaton. Holystone Crescent is ideally situated for easy access to the city centre, major transport links, and local amenities. The area is close to excellent schools, parks, shops, and the Freeman Hospital, making it an ideal location for families, professionals, and commuters alike. The internal accommodation comprises: Entrance porch | Reception hallway with staircase leading up to first floor and understairs store | Versatile front reception room, which would lend itself well to a snug or dining room | Excellent open plan kitchen/dining/living room, to the rear, with glazed French doors onto the garden | The refitted kitchen is particularly impressive and offers a range of modern cabinetry/worktops, integrated appliances throughout and central island with breakfast bar. The staircase then leads up to the first floor landing and onto three bedrooms | The principal bedroom enjoys a large double room to the rear | Bedroom two offers a further comfortable double room | Bedroom three, a smaller single/study/nursery | Family bathroom with shower over the a bath. Externally, the property is approached via a resin driveway for off street parking for one vehicle | To the rear is a well maintained lawned garden with terraced area which is ideal for entertaining. The property also benefits from solar installation, with battery storage and EV charging point. Services: Mains gas, electricity, water & drainage | Tenure: Freehold | Council Tax: Band B| EPC: Rating TBC





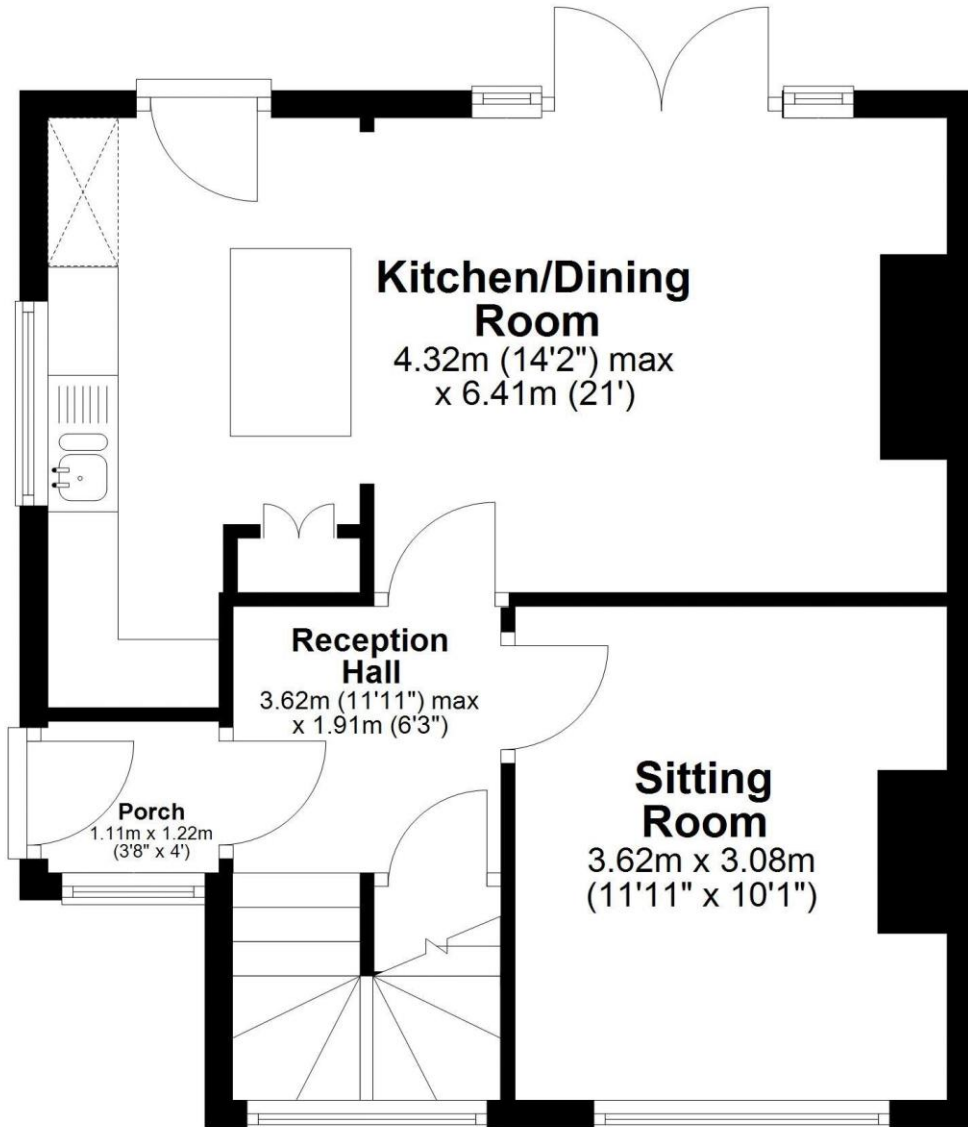
Beautifully Presented & Tastefully Refurbished Semi-Detached Family Home Boasting Three Bedrooms, Family Bathroom, Generous Reception Room, Open Plan Kitchen/Diner, Driveway & Large Lawned Garden! This impressive semi-detached property is well positioned on Holystone Crescent, High Heaton. Holystone Crescent is ideally situated for easy access to the city centre, major transport links, and local amenities. The area is close to excellent schools, parks, shops, and the Freeman Hospital, making it an ideal location for families, professionals, and commuters alike. The internal accommodation comprises: Entrance porch | Reception hallway with staircase leading up to first floor and understairs store | Versatile front reception room, which would lend itself well to a snug or dining room | Excellent open plan kitchen/dining/living room, to the rear, with glazed French doors onto the garden | The refitted kitchen is particularly impressive and offers a range of modern cabinetry/worktops, integrated appliances throughout and central island with breakfast bar. The staircase then leads up to the first floor landing and onto three bedrooms | The principal bedroom enjoys a large double room to the rear | Bedroom two offers a further comfortable double room | Bedroom three, a smaller single/study/nursery | Family bathroom with shower over the a bath. Externally, the property is approached via a resin driveway for off street parking for one vehicle | To the rear is a well maintained lawned garden with terraced area which is ideal for entertaining. The property also benefits from solar installation, with battery storage and EV charging point. Services: Mains gas, electricity, water & drainage | Tenure: Freehold | Council Tax: Band B| EPC: Rating TBC

Price Guide: Offers Over £235,000



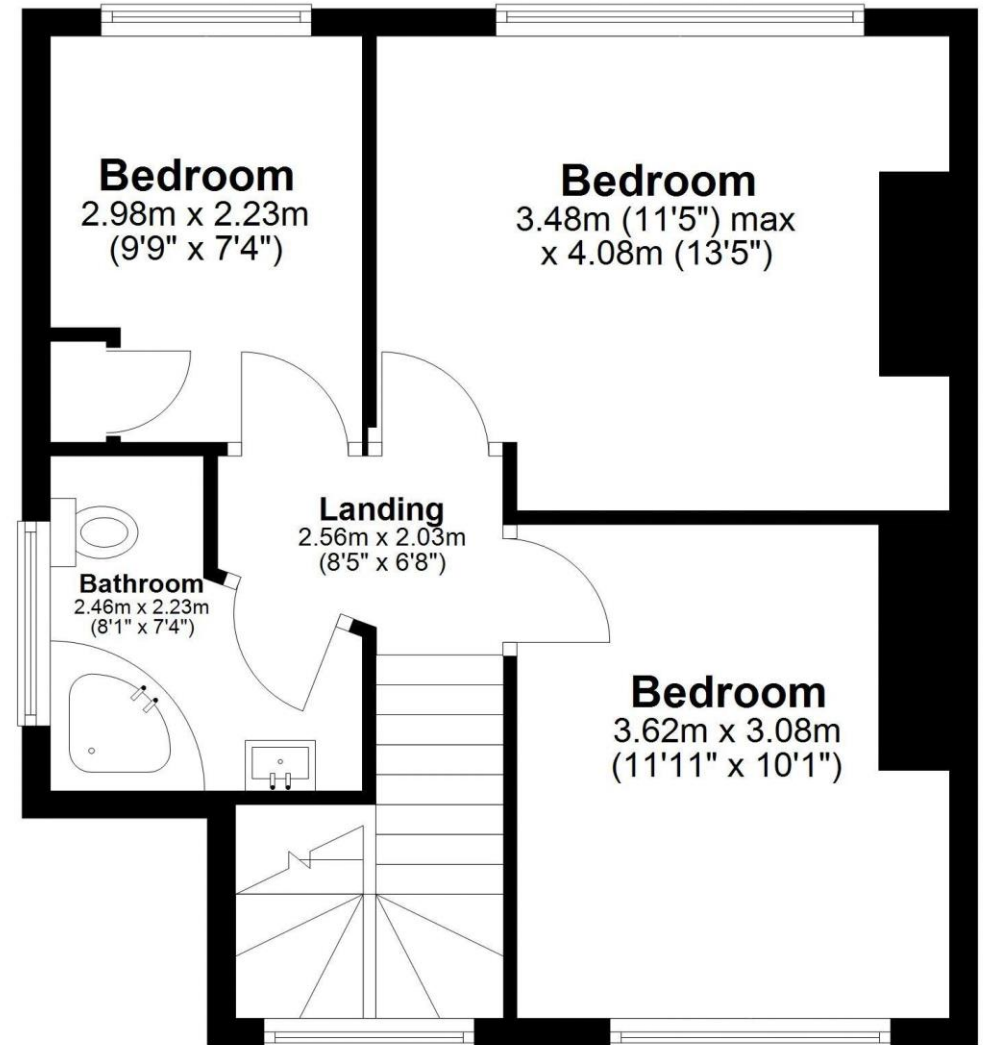
Ground Floor

Approx. 44.0 sq. metres (473.1 sq. feet)



First Floor

Approx. 44.0 sq. metres (473.1 sq. feet)



Total area: approx. 87.9 sq. metres (946.2 sq. feet)

27 Holystone Crescent, High Heaton





SANDERSON
YOUNG

Regional Gosforth Office
95 High Street | Gosforth
Newcastle upon Tyne | NE3 4AA
gosforth@sandersonyoung.co.uk
0191 213 0033