



BERTHON STREET, SE8

£425,000

Two double bedrooms
Off-street parking
Long lease
Recently refurbished
Close to transport links
Energy rating: d

@marshandparsons
marshandparsons.co.uk

MARSH &
PARSONS



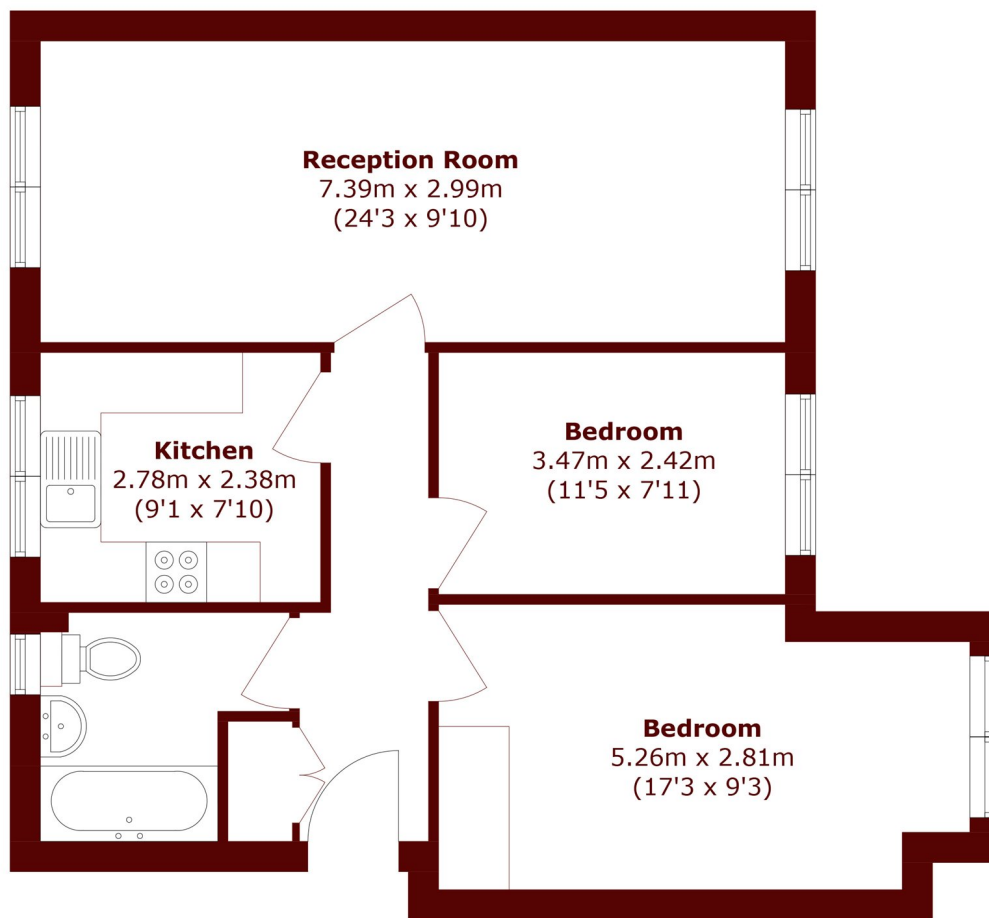
ABOUT THE PROPERTY

A beautifully decorated ground floor flat with two double bedrooms, ideally located in Ravensbourne Mansions. This property benefits from a well proportioned separate kitchen, a large reception room with dining area and the property includes off-street parking.

Within walking distance are the eccentric Deptford market and Greenwich town centre. There is prime access to Deptford station allowing you to get into London Bridge within minutes and multiple bus routes serve the area.



STEP INSIDE BERTHON STREET



Total area (approx.): 64.4 sq. m (693.2 sq. ft)

Greenwich
020 8312 8312

Energy Rating: D We aim to make our particulars both accurate and reliable. However, they are not guaranteed; nor do they form part of an offer or contract. If you require clarification on any points then please contact us, especially if you're traveling some distance to view. Please note that appliances and heating systems have not been tested and therefore no warranties can be given as to their good working order

MARSH &
PARSONS