

HJC

ESTATE AGENCY



Ewell Road

Surbiton, KT6 6AL

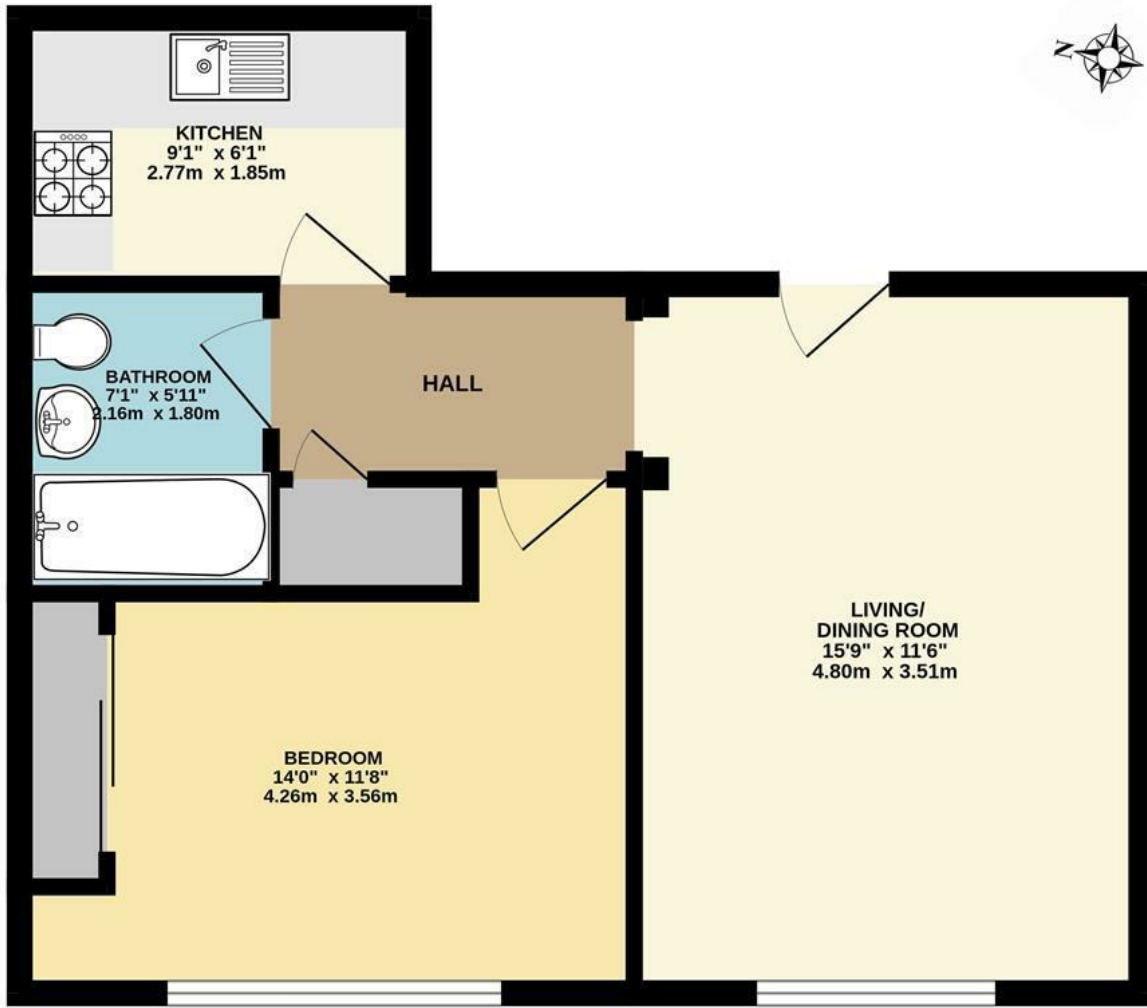
Guide Price £335,000

A beautifully presented one bedroom flat conveniently located close by to Surbiton mainline station and local amenities. The flat is situated on the 1st floor of this lift-serviced, bespoke development and comprises of a bright and airy reception room, separate high specification kitchen, a double bedroom with built-in wardrobe and a modern fitted bathroom. Further benefits include an allocated parking space and offered to market with no onward chain.

Material Info: Brick Walls. Roof Tiles. Water / Electricity / Sewerage Mains. Heating: Electric Underfloor Heating. Mobile Coverage: Indoor / Outdoor Good. Kingston Council Tax Band C.

- Modern One Bedroom Flat
- Floor Floor
- Separate Kitchen
- Underfloor Heating Throughout
- Local Amenities and Mainline Station Close By
- Lift Serviced
- Double Bedroom
- Bathroom
- Allocated Parking Space
- Chain Free

Floor Plan



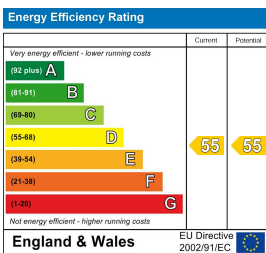
FIRST FLOOR FLAT

EWELL ROAD, SURBITON

INTERNAL FLOOR AREA (APPROX.) 465 sq ft/ 43.2 sq m

Whilst every attempt has been made to ensure the accuracy of this floor plan, measurement of doors, windows, rooms and any other items are approximate and no responsibility is taken for any error, omission or mis-statement. Made with Metropix © 2026.

Energy Efficiency Graph



These particulars, whilst believed to be accurate are set out as a general outline only for guidance and do not constitute any part of an offer or contract. Intending purchasers should not rely on them as statements of representation of fact, but must satisfy themselves by inspection or otherwise as to their accuracy. No person in this firm's employment has the authority to make or give any representation or warranty in respect of the property.