



# Gleadless Road, Sheffield, S2 3AP

£179,995

🛏️ 3 🚿 1 🚗 2



## Why You'll Love It

Step inside and you'll find a beautifully presented living room with a feature fireplace, filled with natural light from the tall front window. To the rear, the dining room is equally generous, flowing seamlessly into the stylish kitchen with its contemporary cabinetry, integrated oven, and attractive finishes.

Upstairs, two well-proportioned bedrooms provide versatile living arrangements, accompanied by a modern family shower room finished to a high standard. The second floor reveals a striking attic bedroom, a vast and bright double bedroom with skylights, creating a peaceful retreat.

Outside, the property boasts a charming frontage and a rear garden with mature planting and plenty of scope for personalisation.

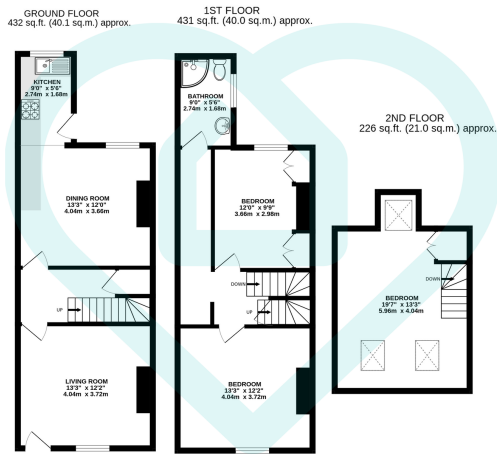


## Why We Love It

Gleadless Road is brilliantly placed for both convenience and connection. Access to the Supertram, puts the city centre, Meadowhall, and Sheffield's universities within easy reach. Locally, you'll find a wealth of shops, cafés, and takeaways, as well as reputable schools and parks just a short walk away.

For those who love the outdoors, Norfolk Heritage Park and Graves Park are close by, and the Peak District is only a short drive. This location combines excellent amenities with direct routes around the city, making it a fantastic choice for busy professionals, growing families, or anyone who wants everything on their doorstep.



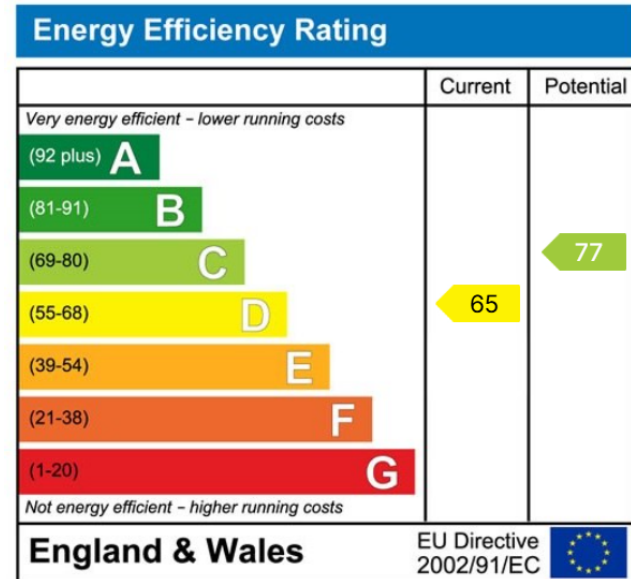


TOTAL FLOOR AREA : 1089 sq.ft. (101.2 sq.m.) approx.

This floor plan is for illustrative purposes only. All measurements and layouts are approximations and do not necessarily capture the precise specifications of the property. No responsibility is taken for any error, omission, or misstatement. We always recommend viewing in person to confirm the exact floor plan of a property. Made with Metropix.



- Gorgeous Mid-Terrace Home
- Bright Lounge With Feature Fireplace
- Sleek Modern Kitchen With Integrated Appliances
- Loft Bedroom With Velux Windows
- Fantastic Access To Public Transport & Local Amenities
- Three Generous Bedrooms Including Loft Conversion
- Spacious Dining Room
- Contemporary Shower Room
- Rear Garden With Potential
- Walking Distance To Shops, Schools & Green Spaces



Sales | Lettings | New Homes

VAT Reg Number: 191 3588 84  
 Company Reg Number: 08610489  
 Company Reg Address: 67 Middlewood Road, Hillsborough, Sheffield, S6 4GX.

The MorfittSmith Building  
 67 Middlewood Road  
 Hillsborough  
 Sheffield  
 S6 4GX

Get in touch - arrange an appointment



0114 232 1764  
 sales@morfittsmith.co.uk  
 lettings@morfittsmith.co.uk  
 newhomes@morfittsmith.co.uk  
 www.morfittsmith.co.uk



@MorfittSmith  
 @MorfittSmith  
 MorfittSmith  
 Estate & Letting Agent