



Acton Lane, W3

£1,250,000

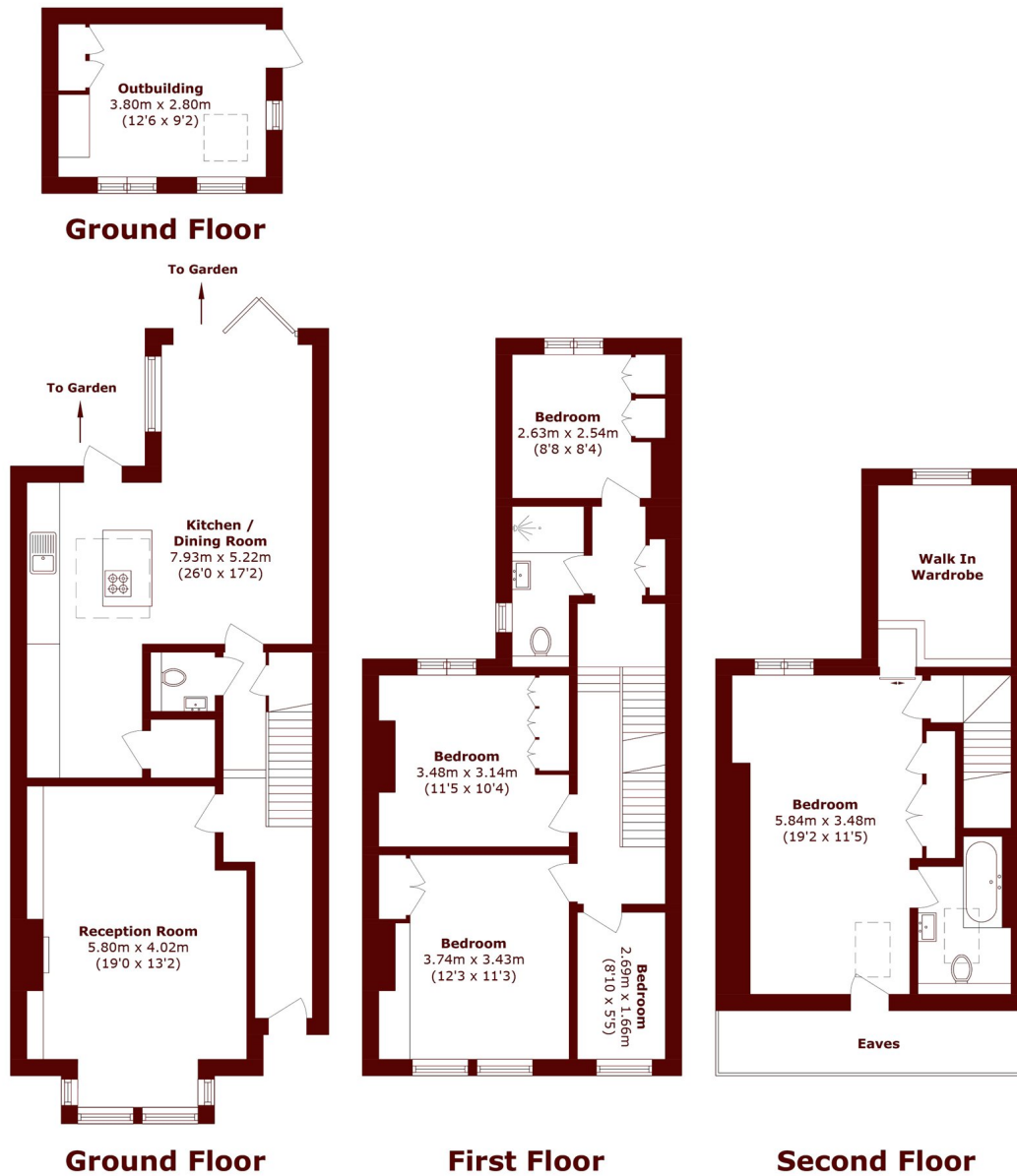
This attractive Edwardian terraced home, five-bedroom freehold property has been thoughtfully renovated to combine timeless character with high-spec contemporary living. Meticulously upgraded throughout, the property offers beautifully considered design, outstanding storage solutions, and a true turnkey finish.



Acton Lane is situated close to Acton High Street and Turnham Green Terrace of Chiswick, where there is an array of boutique shops, restaurants, bars and cafés. Local primary schools are excellent (Ark Prioory and Ark Byron). Transport links include Turnham Green Terrace (District line), Acton Town (Piccadilly and District), Acton Central & Acton Main Line (Elizabeth Line).

- Five bedrooms • Two Bathrooms • Close To Station •
 - South Facing Garden • Immaculate Condition • Outbuilding •
-





Total area (approx.): 154.6 sq. m (1664.1 sq. ft)
(Excluding Eaves)
Outbuilding area (approx.): 10.6 sq. m (114.0 sq. ft)

Robertson Smith & Kempson Acton Sales
137 High Street, Acton,
London, W3 6LY
020 8896 3996
actonsales@robertsonsmithandkempson.co.uk

Energy Rating: D. We aim to make our particulars both accurate and reliable. However they are not guaranteed; nor do they form part of an offer or contract. If you require clarification on any points then please contact us, especially if you're traveling some distance to view. Please note that appliances and heating systems have not been tested and therefore no warranties can be given as to their good working order.