



WETHERELL

MAYFAIR'S FINEST PROPERTIES



Charles Street, W1J

£1,980 Per week

Just moments from Berkeley Square, this one bedroom apartment located on the fourth floor, has been stylishly designed blending period detailing with contemporary sophistication.

Interiors feature plaster mouldings, herringbone hardwood oak flooring and bespoke joinery. Paired with advanced comforts such as underfloor heating, comfort cooling, and Crestron-controlled lighting by Light Directions.

The open-plan living and dining area is anchored by a bespoke kitchen with natural stone surfaces, Gaggenau and Miele appliances, and Dornbracht fixtures. The bedroom offers a fitted wardrobe and a shower room.

Residents benefit from porter, secure entry, and lift access.

Charles Street is conveniently located for all the excellent shopping of New Bond Street and is close to Hyde Park, Green Park and St James' Park with great transport from Green Park and Bond Street Underground.

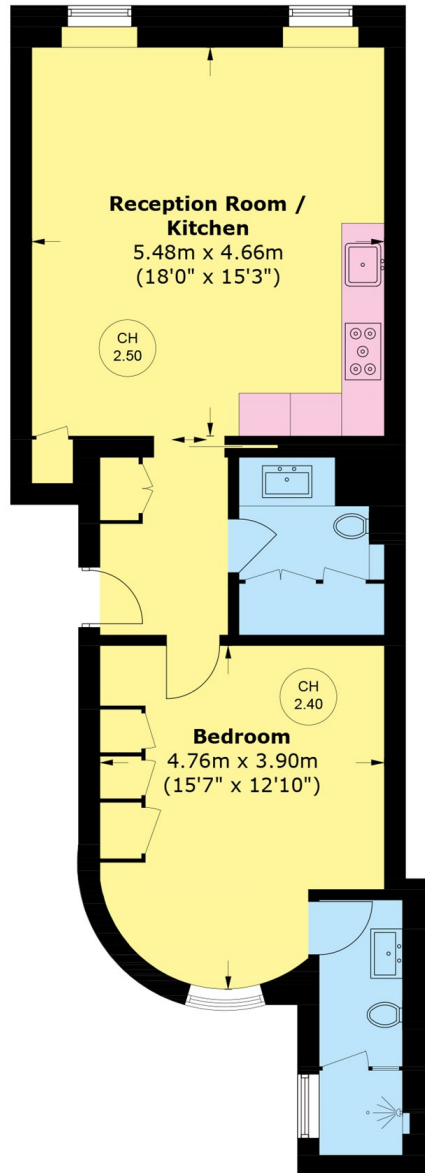


FEATURES

- Spacious Double Bedroom • High Ceilings • Luxury Fixtures & Fittings • Comfort Cooling • Building Portage • Unfurnished •



Charles Street,
London, W1J



Fourth Floor

Total area (approx.): 63.0 sq. m (678.1 sq. ft)



WETHERELL
MAYFAIR'S FINEST PROPERTIES

102 Mount Street,
London, W1K 2TH

T: 020 7529 5588
E: rentals@wetherell.co.uk

We aim to make our particulars both accurate and reliable. However they are not guaranteed; nor do they form part of an offer or contract. If you require clarification on any points then please contact us, especially if you're traveling some distance to view. Please note that appliances and heating systems have not been tested and therefore no warranties can be given as to their working order.



wetherell.co.uk