



Onslow Close, KT7

£1,135,000

Dexters



Onslow Close, KT7

A wonderful, spacious three-bedroom semi-detached family home of nearly 1800Sqft, quietly positioned within one of Thames Ditton's most sought-after cul-de-sacs.

This property offers the perfect blank canvas for buyers looking to create a home tailored to their own style and specification. There is planning permission in place for a side extension and loft conversion (planning app no 2012/0733)

The accommodation currently comprises an entrance hall leading to a bright living room, a generous second reception room, kitchen, and downstairs cloakroom.

Upstairs are three double bedrooms, including a master bedroom with en suite, together with a family bathroom. Outside, the property benefits from a good-sized front garden, driveway parking, a garage, and a beautiful rear garden.

Peacefully located in a conservation area, yet convenient for local amenities, highly regarded schools, and excellent transport links, including Thames Ditton railway station providing direct access into London.

Features

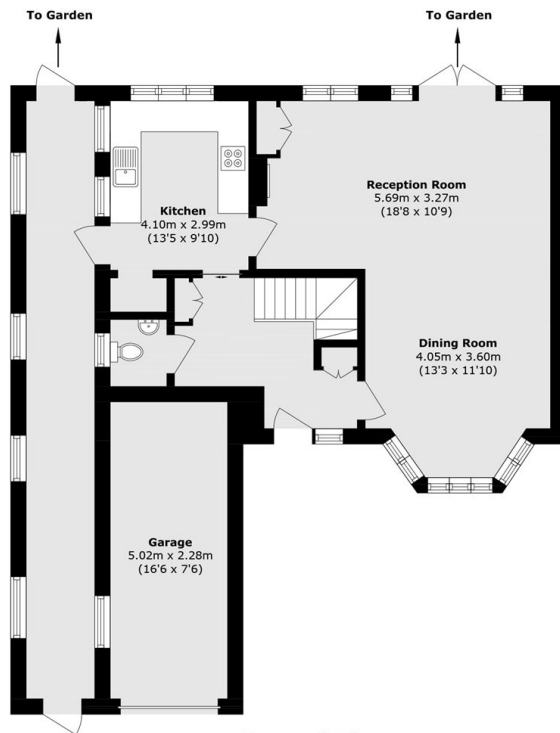
- Semi Detached
- Three Bedrooms
- Two Bathrooms
- Nearly 1800SqFt
- Garage
- Great Location



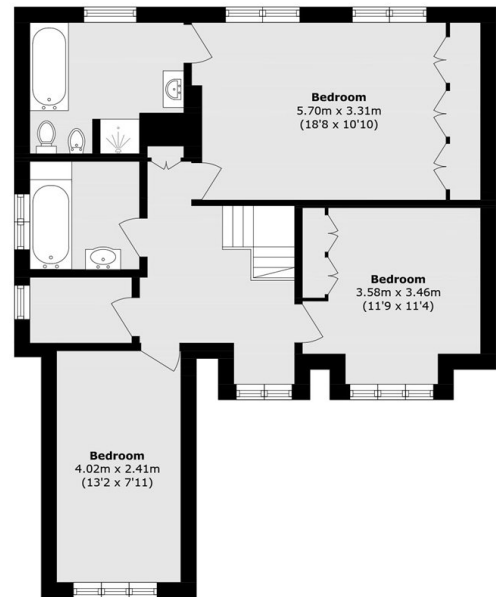




Onslow Close, Thames Ditton, KT7



Ground Floor



First Floor

Total area (approx.): 139.2 sq. m (1498.3 sq. ft)

Garage area (approx.): 11.4 sq. m (122.7 sq. ft)