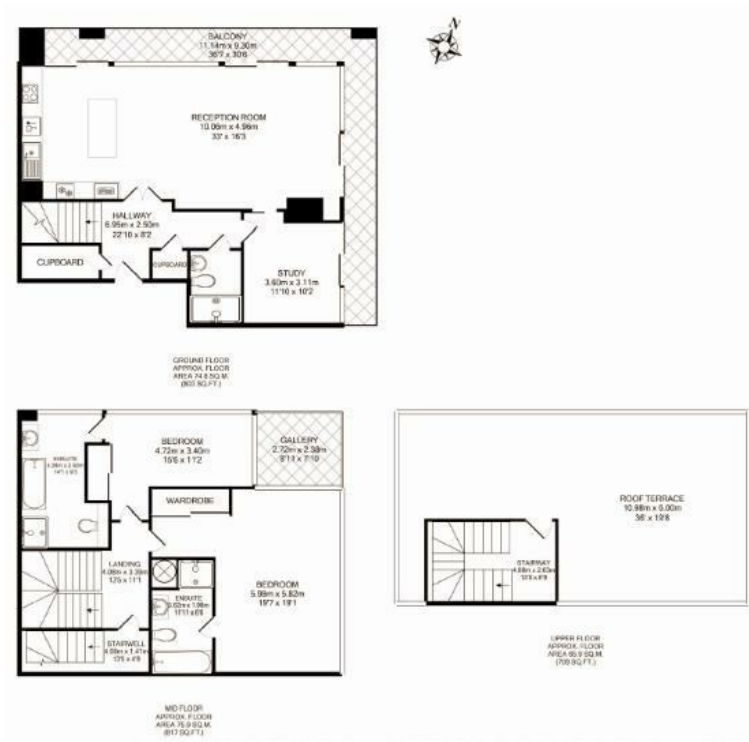




Hirst Court, Grosvenor Waterside, Gatliff Road, Sloane Square SW1W 8QD

£3,500,000

- 24/7 CONCIERGE
- ROOF TERRACE
- RARE PENTHOUSE
- VIDEO VIEWING AVAILABLE
- 3 BEDROOMS 3 BATHROOMS
- WALKING DISTANCE TO SLOANE SQUARE , KINGS ROAD AND BATTERSEA PARK
- AMAZING RIVER VIEWS
- 2 PARKING SPACES
- SELF MANAGED DEVELOPMENT



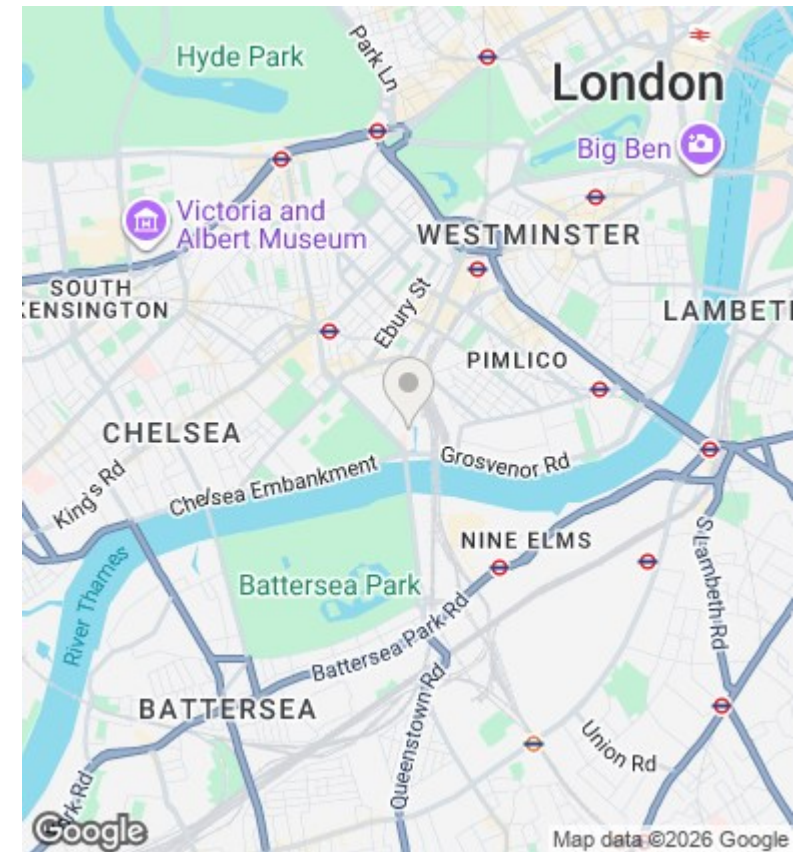
Viewings

Viewings by arrangement only.
 Call 02077225022 to make an appointment.

Council Tax Band

H

EPC Rating:



Energy Efficiency Rating		
	Current	Potential
<i>Very energy efficient - lower running costs</i>		
(92 plus) A		
(81-91) B		
(69-80) C		
(55-68) D		
(39-54) E		
(21-38) F		
(1-20) G		
<i>Not energy efficient - higher running costs</i>		
England & Wales	EU Directive 2002/91/EC	