



GLENGALL ROAD, NW6

£330,000

Chain free
Duplex
One bedroom
Excellent Transport Links
Edwardian Conversion
Lift Access

@marshandparsons
marshandparsons.co.uk

MARSH &
PARSONS



ABOUT THE PROPERTY

This superb duplex apartment offers fantastic light and space and has a modern finish throughout. Positioned over two floors of a well-maintained school conversion with lift, this property would be ideal as either a first time purchase, investment or pied-à-terre. The property comprises a generous kitchen/reception room with stairs leading to a large double bedroom and well-appointed bathroom.

Glengall Road is a quiet, leafy, residential street ideally located to the cafés, restaurants and amenities of Salusbury Road in Queen's Park. Local transport links include Queen's Park (Bakerloo line), Kilburn (Jubilee Line) and Brondesbury Park (London Overground).

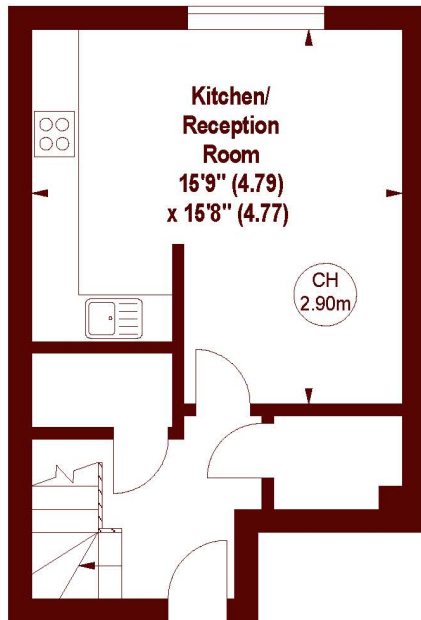
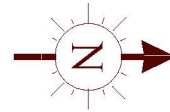


STEP INSIDE GLENGALL ROAD

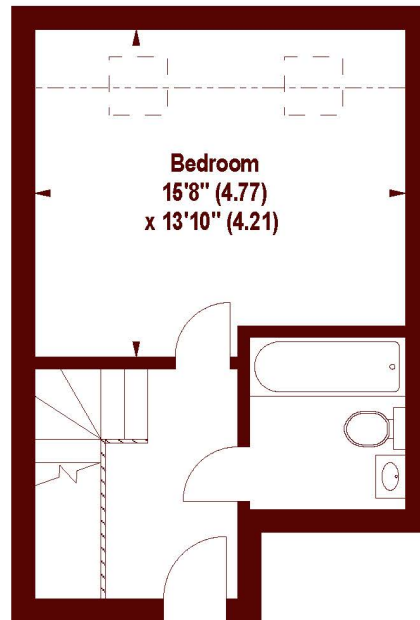
Academy Court, NW6

APPROX. GROSS INTERNAL FLOOR AREA 693 SQFT / 64.38 SQM

Key :
CH - Ceiling Height



THIRD FLOOR



FOURTH FLOOR

The floor plan is not to scale and measurements and areas shown are approximate and therefore should be used for illustrative purposes only.

The plan has been prepared in accordance with the RICS code of Measuring Practice and whilst we have confidence in the information produced, it must not be relied on.

If there is any aspect of particular importance, you should carry out or commission your own inspection of the property.

Copyright of FeaturePRO.

Queen's Park
020 7624 4513

Energy Rating: C We aim to make our particulars both accurate and reliable. However, they are not guaranteed; nor do they form part of an offer or contract. If you require clarification on any points then please contact us, especially if you're traveling some distance to view. Please note that appliances and heating systems have not been tested and therefore no warranties can be given as to their good working order

MARSH &
PARSONS