



Jordan fishwick

Apt 306 Hacienda, 11-15 Whitworth Street,
£1,450 Per Calendar Month



Hacienda Manchester M1 5DB

£1,450 Per Calendar Month



The Property

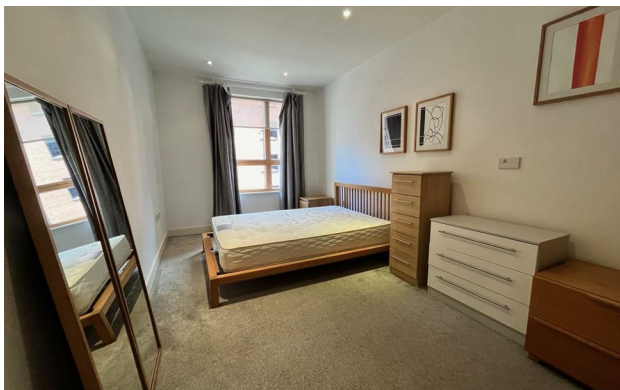
Available Mid August. This 3rd floor Apartment overlooks the Rochdale Canal benefiting from approximately 860 sq ft of living space with two excellent size double bedrooms, a stylishly appointed bathroom and en-suite and an open plan living/kitchen area. The apartment comes with a balcony There is ample storage space and the ultra modern kitchen benefits from integrated appliances such as fridge/freezer, dishwasher, electric oven and ceramic hob. Furnished. No Parking. EPC Rating C. Tax Band E.

VIDEO/ PHOTO OFFERS NOT ACCEPTED - PLEASE CALL TO BOOK A VIEWING

- Available Mid August
- 3rd Floor Apartment
- Two Double bedrooms
- Canal Views
- Tax Band E
- EPC Rating C
- No parking
- Close to Universities
- Close to City Centre



Energy Efficiency Rating		
	Current	Potential
Very energy efficient - lower running costs		
(92 plus) A		
(81-91) B		86
(69-80) C	80	
(55-68) D		
(39-54) E		
(21-38) F		
(1-20) G		
Not energy efficient - higher running costs		
England & Wales	EU Directive 2002/91/EC	





These particulars are believed to be accurate but they are not guaranteed and do not form a contract. Neither Jordan Fishwick nor the vendor or lessor accept any responsibility in respect of these particulars, which are not intended to be statements or representations of fact and any intending purchaser or lessee must satisfy himself by inspection or otherwise as to the correctness of each of the statements contained in these particulars. Any floorplans on this brochure are for illustrative purposes only and are not necessarily to scale.

Offices at: Offices at Chorlton, Didsbury, Disley, Hale, Glossop, Macclesfield, Manchester Deansgate, Manchester Whitworth Street, New Mills, Sale, Wilmslow and Withington