

Colin Dean Residential

in partnership with Dexters



Beverley Gardens, HA9

£4,850 pcm

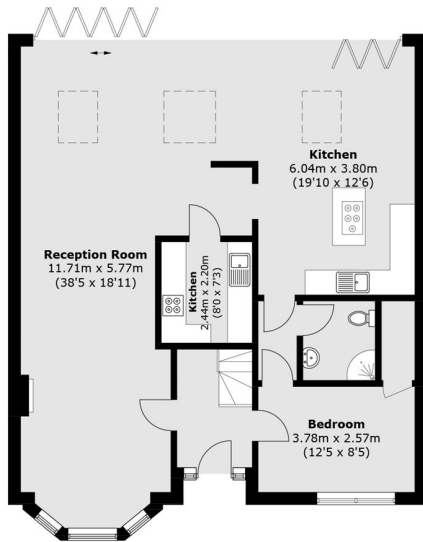
A beautifully presented five-bedroom, three-bathroom Semi-detached family home offering spacious and contemporary living in a highly sought after location. The property features a bright and spacious through lounge, along with a stunning open-plan kitchen/dining area complete with premium integrated appliances, a stylish central island and bi-fold doors leading onto a well-maintained private garden. Energy Rating: C.

This property is located moments away from Wembley Stadium and the renowned London Designer Outlet offering an excellent selection of shops, restaurants and bars. Transport links are within easy reach, including Preston Road Station (Metropolitan Line) approximately 0.6 miles away, and Wembley Park Station (Metropolitan and Jubilee Lines), providing convenient access into Central London and beyond.

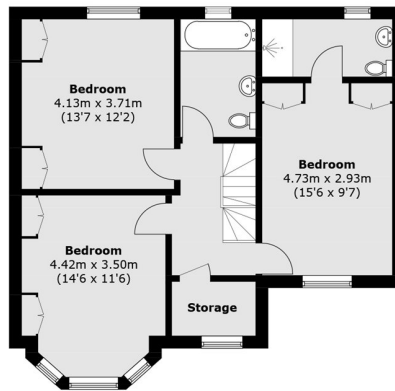
- Semi Detached House • Five Double Bedrooms • Three Bathrooms •
- Part-Furnished • Private Garden • Off Street Parking •

Colin Dean Residential

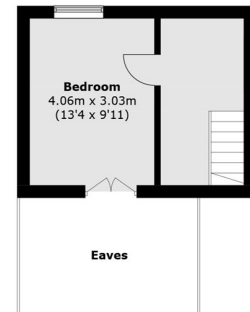
in partnership with Dexters



Ground Floor



First Floor



Second Floor

Total area (approx.): 194.1 sq. m (2,089.2 sq. ft)
(Excluding Eaves)

Colin Dean Residential
350 Pinner Road,
Harrow, HA1 4LB
020 8515 7929
daniel.murray@colindean.com

Energy Rating: C We aim to make our particulars both accurate and reliable. However they are not guaranteed; nor do they form part of an offer or contract. If you require clarification on any points then please contact us, especially if you're travelling some distance to view. Please note that appliances and heating systems have not been tested and therefore no warranties can be given as to their good working order.