



## Ashton Gardens, TW4

£529,950

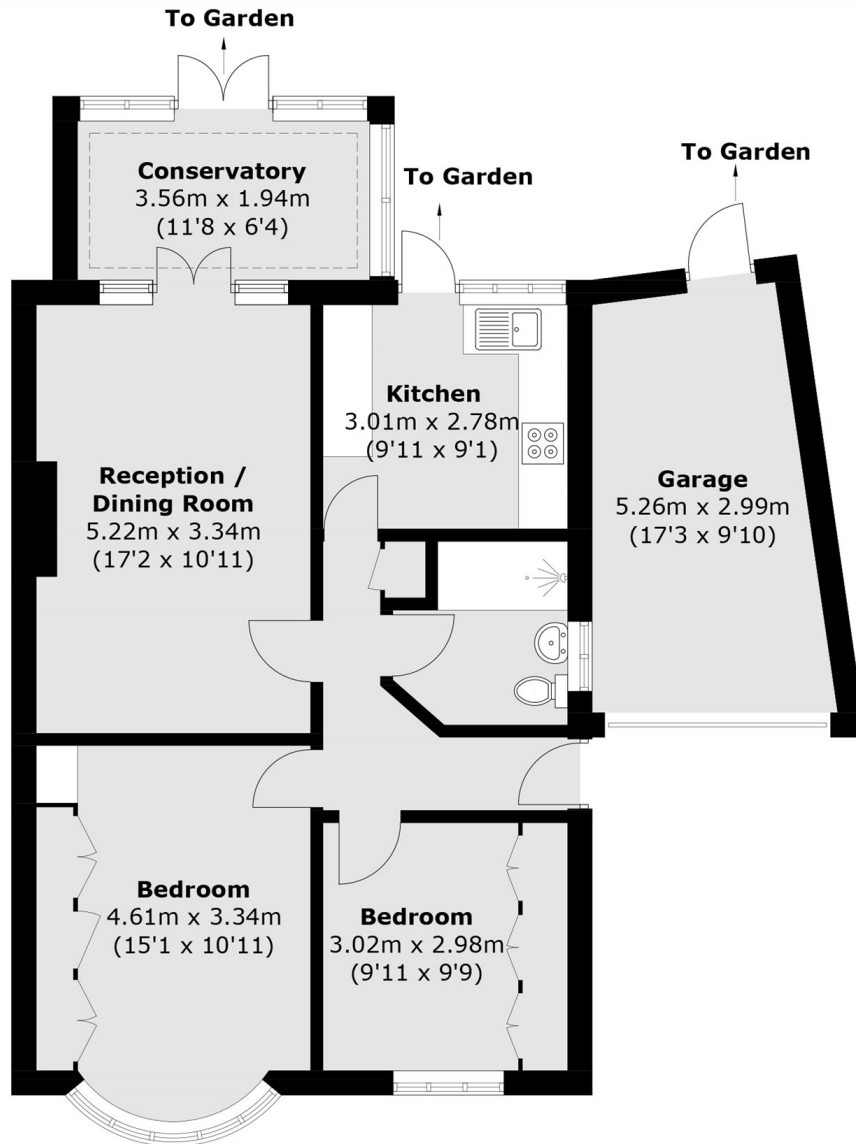
A Semi Detached Bungalow, with off street parking and attached side garage. Presented with no onward chain and in good condition. This property also represents a fantastic opportunity to extend in a variety of directions, subject to planning permissions.

This property is around the corner from St Michael and St Martin Primary School as well as within walking distance to Hounslow West Tube Station.

### Features

- No Onward Chain
- Garage
- Large Rear Garden
- Potential To Extend
- Driveway Parking
- Close to Transport Links

# Ashton Gardens, Hounslow, TW4



## Ground Floor

Approx Internal Area: 69.8 sq. m (751.3 sq. ft)

Garage: 13.5 sq. m (145.3 sq. ft)

Total: 83.3 sq. m (896.6 sq. ft)