

Moorland Green, Gorseinon, Swansea, SA4 4QF

Offers Over £90,000

 2  2  1



- Well Presented Two Bedroom Flat
- Open Plan Kitchen/Lounge
- Two Designated Parking Spaces
- Juliette Balcony
- Family Bathroom and Master En-Suite
- No Onward Chain
- Quiet Cul-de-Sac Location
- Close to Nearby Shops and Amenities
- Ideal First Time Buyer or Downsize Property
- Please Quote JH001 When Enquiring

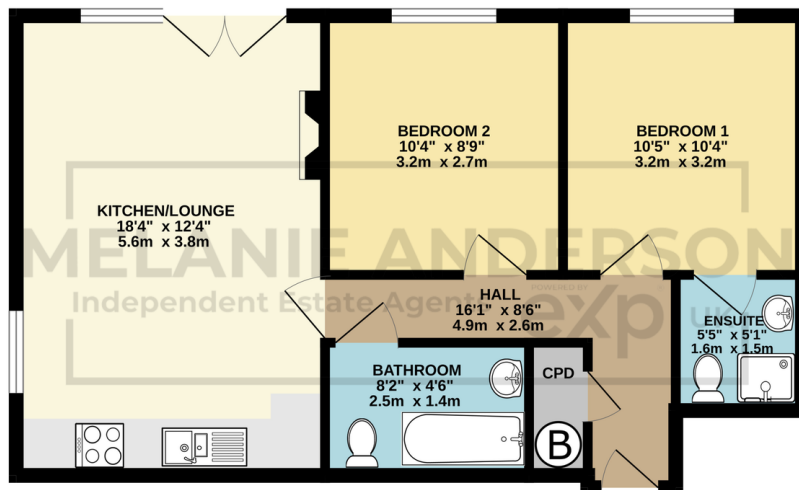
MELANIE ANDERSON

Independent Estate Agents

POWERED BY
exp UK



GROUND FLOOR
562 sq.ft. (52.2 sq.m.) approx.



TOTAL FLOOR AREA : 562 sq.ft. (52.2 sq.m.) approx.
Whilst every attempt has been made to ensure the accuracy of the floorplan contained here, measurements of doors, windows, rooms and any other items are approximate and no responsibility is taken for any error, omission or mis-statement. This plan is for illustrative purposes only and should be used as such by any prospective purchaser. The services, systems and appliances shown have not been tested and no guarantee as to their operability or efficiency can be given.
Made with Meeplex ©2025

Offered with no onward chain is this well-presented two bedroom flat in a quiet cul-de-sac location in Gorseinon. Briefly comprising of: kitchen/lounge, two double bedrooms, family bathroom and master en-suite. Benefitting from two designated parking spaces, modern electric fireplace and a Juliette balcony. Situated in a convenient location nearby Swansea City Centre, Fforestfach Retail Park and with easy access to the M4. Within popular school catchments. Ideal property for first time buyers, downsize or retirement. Leasehold with 108 years remaining. Viewing comes highly recommended.

Please quote JH001 when enquiring about this property.

01792 805075

Swansea, Mumbles & Cower

sales@melanieanderson.co.uk