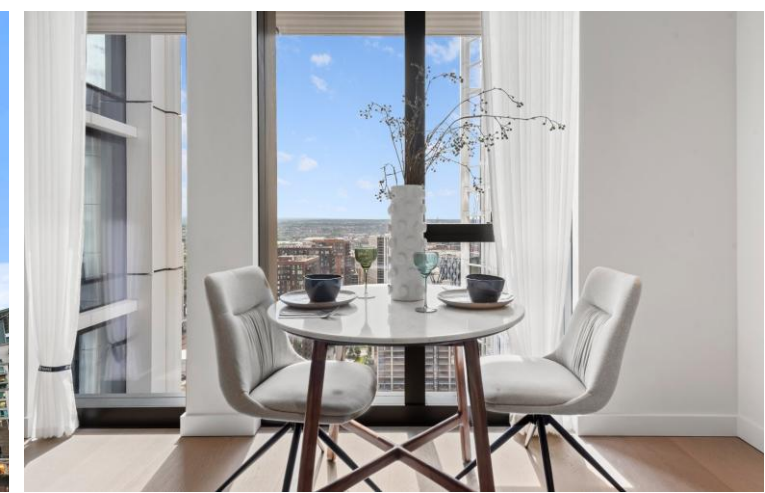




River Park Tower  
1 Nine Elms Lane, SW8

CHESTERTONS





Short Let  
 Bills Included  
 Luxury one bedroom apartment in the sought after River Park Tower. Stunning apartment on the 29th floor, boasting over 603 Sq. Ft. of space which has been beautifully designed with high-end finishes.

This brand-new modern property features one generous bedroom, a stunning open plan reception room and modern kitchen with integrated appliances and space for dining, a winter garden, one luxurious bathroom and ample of storage, offering a sophisticated yet comfortable living experience.

Residents will benefit from 24-hour concierge, underfloor heating, air conditioning and the outstanding amenities, a fully equipped gym, cinema room, and various communal spaces such as residents lounge, games room & a kids play zone.

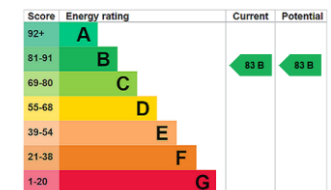
Newly opened Nine Elms tube station and Vauxhall tube and mainline station are moments away from the development to get you around London. You may also choose Thames Clipper service down the river. Battersea Power Station is a short walk away with all it has to offer.

This development has been finished with a perfect combination of inventive contemporary living in a historic London location within green surroundings. It is a place where you can enjoy city views over the City of London and experience the absolute best of international culture, entertainment.

- Brand New Apartment
- 29th Floor
- Bright and Spacious
- Open Plan Reception
- Exceptional Amenities
- 24 Hour Concierge

**£7,325 pcm**

Additional tenant charges apply (fees apply to non-AST tenancies only)  
 Tenancy Agreement Fee: £300  
 References per Tenant/Guarantor: £60  
 Inventory check (approx. £100 – £250 inc. VAT)  
[chestertons.co.uk/property-to-rent/applicable-fees](http://chestertons.co.uk/property-to-rent/applicable-fees)



**Minimum Term:** 1 months  
**Deposit Required:** £3,380.77  
**Local Authority:** London Borough of Wandsworth  
**Council Tax Band:** E  
**EPC Rating:** B  
**Furnished**

**Chestertons Battersea Park & Nine Elms Lettings**

62-64 Battersea Bridge Road  
 London  
 SW11 3AG  
[batterseapark@chestertons.co.uk](mailto:batterseapark@chestertons.co.uk)  
 02030408269  
[chestertons.co.uk](http://chestertons.co.uk)

# Nine Elms Lane, SW8

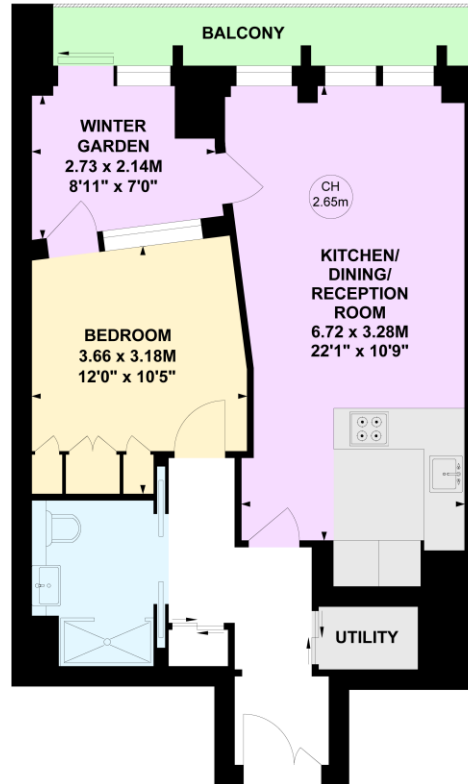
Approximate gross internal area

56.91 sq m / 613 sq ft

(Including Winter Garden)

Winter Garden : 5.26 sq m / 57 sq ft

Key :  
CH - Ceiling Height



**Twenty-Nine Floor**

This plan is not to scale and must be used as layout guidance only. All measurements and areas are approximate and should not be relied upon to provide accurate information. This plan must not be relied upon when making property valuations, design considerations or any other such relevant decisions. We accept no responsibility or liability (whether in contract, tort or otherwise) in relation to any loss whatsoever arising from or in connection with any use of this plan or the adequacy, accuracy or completeness of it or any information within it.

Chesterton UK Services Limited trading as Chestertons for themselves and for the vendor of this property whose agents they are, give notice that (i) these particulars do not constitute any part of an offer or contract, (ii) all statements contained within these particulars are made without responsibility on the part of Chestertons or the vendor, (iii) whilst made in good faith, none of the statements contained within these particulars are to be relied upon as a statement or representation of fact, (iv) any intending purchasers must satisfy themselves by inspection or otherwise as to the correctness of each of the statements contained within these particulars, (v) the vendor does not make or give either Chestertons or any person in their employment any authority to make or give representation or warranty whatsoever in relation to this property. Wide angle lenses may be used. ©Copyright Chestertons | Chesterton Global Ltd | Registered Office 5th Floor, The Lantern, 75 Hampstead Road, London, NW1 2PL Registered Company Number 05334580.



This paper is  
100% recyclable