



**The Willowcrest, Widham Gardens, Station Road**  
Purton

**£749,995**



# The Willowcrest, Widham Gardens

Station Road, Purton

This impressive five bedroom detached new home offers a perfect blend of contemporary design and high-quality finishes. The property is offered with no onward chain, making it an ideal choice for buyers seeking a smooth move. Upon entering, you are welcomed into a bright hallway that leads to the heart of the home - a beautifully appointed kitchen featuring luxury fitted units, an integrated AEG oven and induction hob, and a full suite of Electrolux integrated appliances. The kitchen, dining area, utility room, and bathrooms are all finished with stylish LVT flooring, while the remainder of the property benefits from plush carpeting. The principal bedroom boasts fitted wardrobes by Spacepro, and all bathrooms are equipped with elegant Roca sanitaryware. Modern conveniences include an air source heat pump for efficient heating, ultra-fast hardwired fibre broadband for seamless connectivity, and a 10 year NHBC Buildmark warranty (with a 2 year Wain Homes warranty for added peace of mind). The double garage and driveway provide parking, complete with an electric car charging unit for eco-friendly living. Computer generated images and floor plans are representative and used for illustration purposes only. Dimensions shown are internal finished dimensions which may vary as each home is built individually and the precise internal finishes may not always be the same. Please be aware that window and door positions could vary due to plot orientation. These particulars are intended for guidance only and their accuracy is not guaranteed. They do not constitute a contract, part of a contract or warranty.



- |  |   |   |   |
|--|---|---|---|
| <b>3 Bedroom Homes</b>   | <b>4 Bedroom Homes</b>  | <b>5 Bedroom Homes</b>  | <b>Affordable Homes</b>   |
| <ul style="list-style-type: none"> <li><span style="color: purple;">■</span> The Brinkley (BRK)</li> <li><span style="color: yellow;">■</span> The Meadowside (MEAS)</li> <li><span style="color: orange;">■</span> The Orchard (ORC)</li> </ul> | <ul style="list-style-type: none"> <li><span style="color: teal;">■</span> The Brookton (BKE)</li> <li><span style="color: lightblue;">■</span> The Entwistle (ENT)</li> <li><span style="color: blue;">■</span> The Highstone (HIS)</li> <li><span style="color: brown;">■</span> The Madocks (MAD)</li> </ul> | <ul style="list-style-type: none"> <li><span style="color: pink;">■</span> The Willowcrest (WYL)</li> <li><span style="color: red;">■</span> The Woodcroft (WOC)</li> </ul> | <ul style="list-style-type: none"> <li><span style="color: grey;">■</span> Grand Quay Homes</li> <li><span style="color: lightgrey;">■</span> Location of affordable homes is indicated.</li> </ul> |



- NEW HOME
- NO ONWARD CHAIN
- GARDENS LANDSCAPED TO FRONT AND TURFED

**Hall**

**Lounge**

12' 5" x 19' 1" (3.79m x 5.82m)

**Dining / Family**

20' 2" x 9' 3" (6.14m x 2.81m)

**Kitchen**

12' 5" x 10' 11" (3.78m x 3.33m)

**Utility**

6' 4" x 6' 6" (1.93m x 1.97m)

**Study / Snug**

12' 7" x 8' 1" (3.84m x 2.46m)

**Cloakroom**

5' 11" x 6' 5" (1.80m x 1.95m)

**Landing**

**Bedroom 1**

16' 1" x 10' 8" (4.91m x 3.26m)

**En-suite**

8' 7" x 3' 8" (2.62m x 1.12m)

**Bedroom 2**

12' 8" x 10' 8" (3.85m x 3.26m)

**En-suite**

6' 11" x 6' 5" (2.12m x 1.95m)

**Bedroom 3**

12' 3" x 11' 0" (3.73m x 3.35m)

**Bedroom 4**

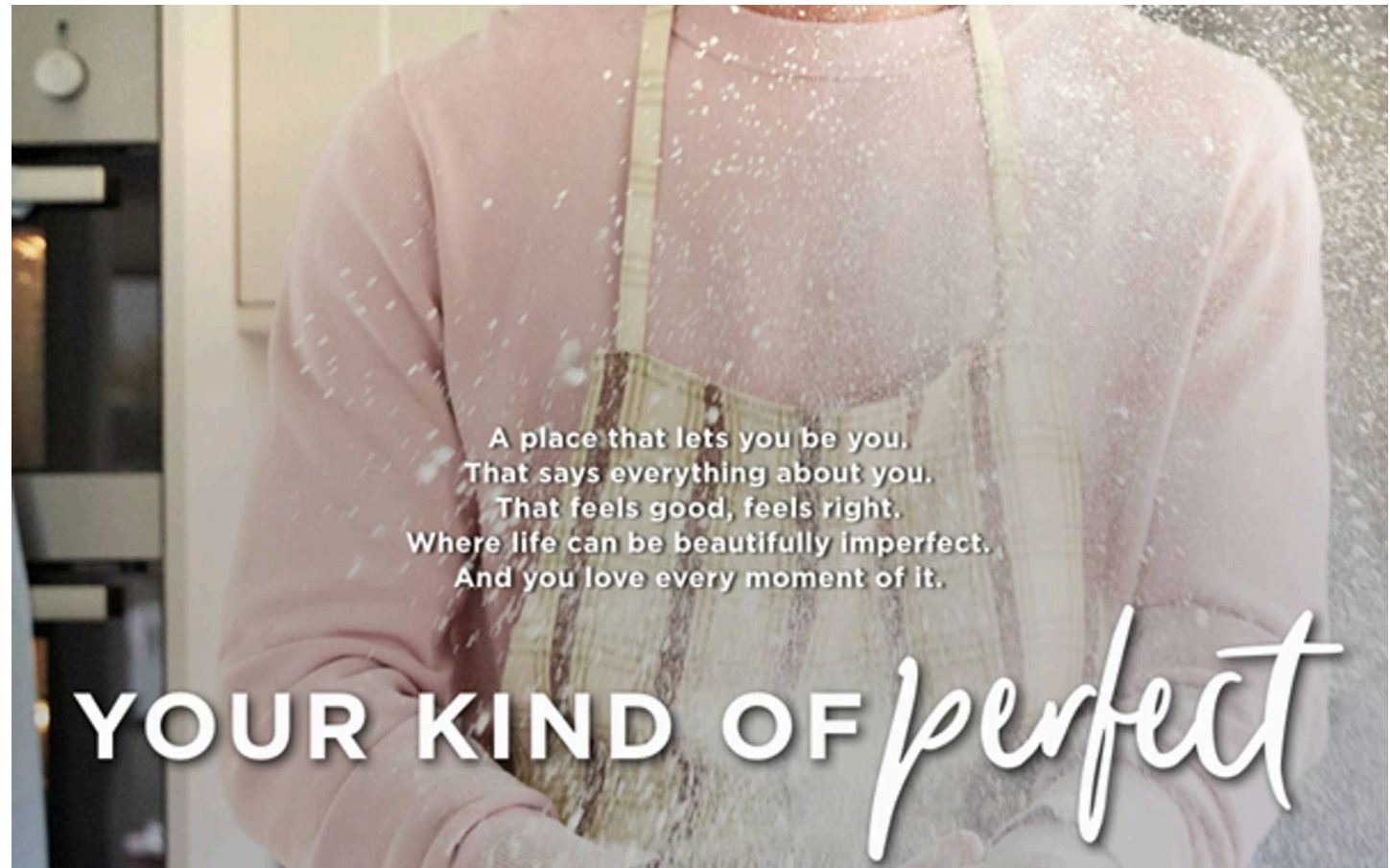
12' 5" x 7' 2" (3.79m x 2.19m)

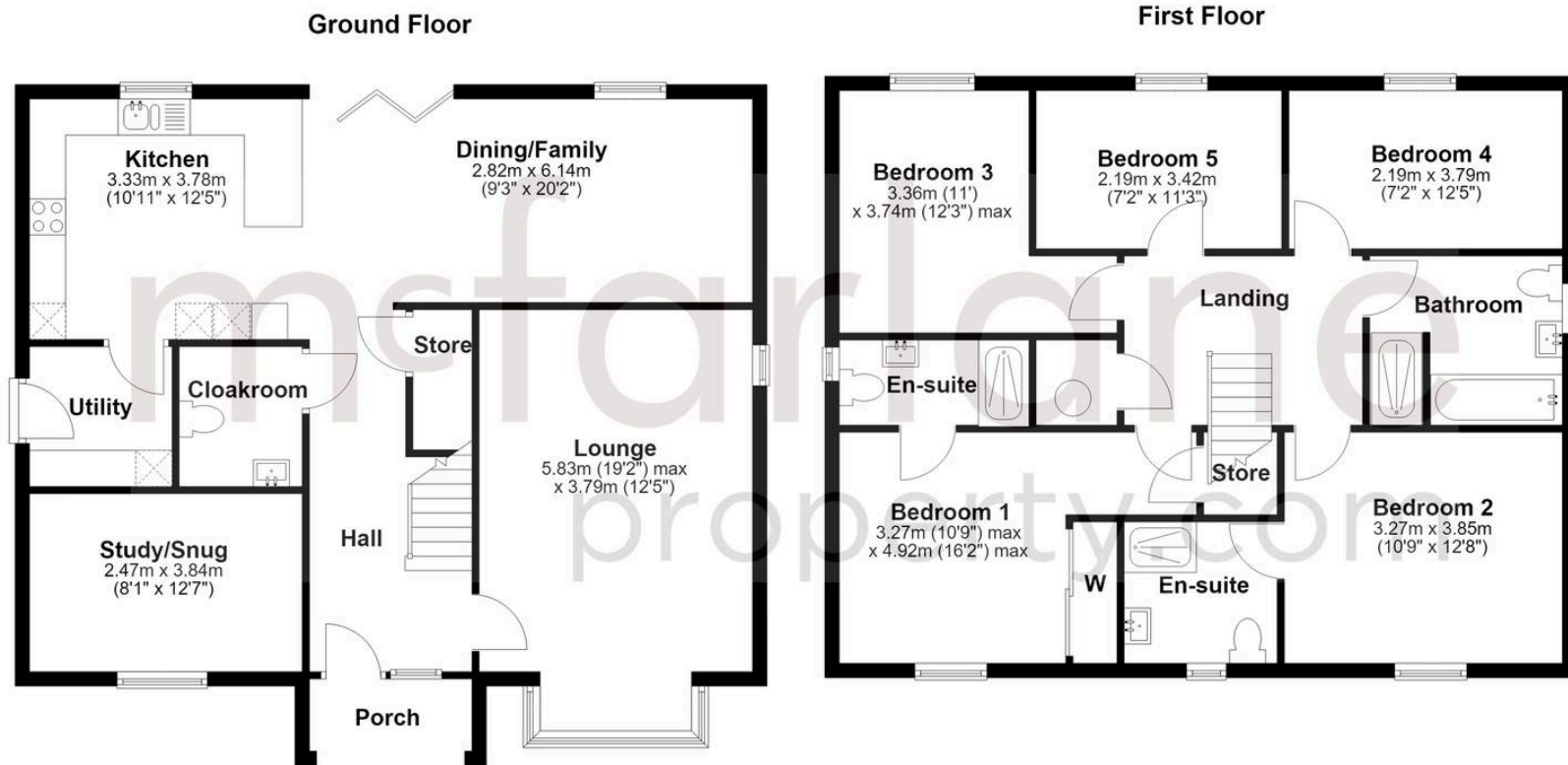
**Bedroom 5**

11' 3" x 7' 2" (3.42m x 2.19m)

**Bathroom**

8' 9" x 7' 8" (2.67m x 2.34m)





# McFarlane Sales & Lettings

McFarlane Sales & Letting, 106 High Street - SN8 1LT

01672 514380 • marlborough@mcfarlaneproperty.com • www.mcfarlaneproperty.com/