

Roehampton Lane, SW15

£2,400 Per calendar month

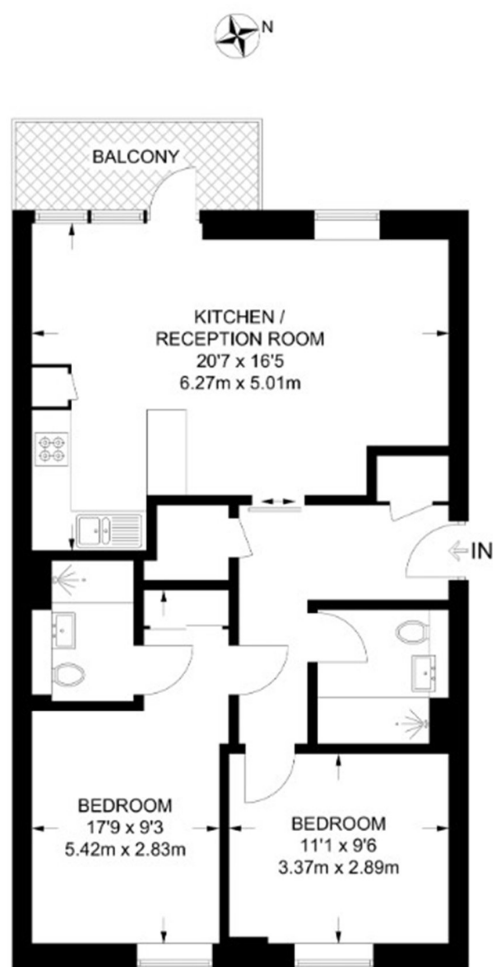
This bright and spacious two double bedroom flat, has an open plan reception with a modern integrated kitchen, breakfast bar and access to a private balcony. The property further benefits from a principal Ensuite and separate family bathroom.

Close to the University of Roehampton and Richmond Park, one of London's largest green spaces. The area is residential and well-connected, with nearby shops, schools, and bus routes to Putney and central London.

Features

- Two Double Bedrooms
- Two Bathrooms
- Open Plan Reception
- Integrated Kitchen
- Wood Floors
- Private Balcony

Roehampton Lane, London, SW15



SECOND FLOOR

APPROXIMATE GROSS INTERNAL AREA
732 SQ FT / 68.0 SQ M

This plan has been drawn for illustrative and identification purposes only.

Dexters

Putney
176 Putney High Street
London
SW15 1RS
Lettings
020 8789 9090

Energy Rating: C. We aim to make our particulars both accurate and reliable. However they are not guaranteed; nor do they form part of an offer or contract. If you require clarification on any points then please contact us, especially if you're traveling some distance to view. Please note that appliances and heating systems have not been tested and therefore no warranties can be given as to their good working order.

 **RICS** | Regulated
Estate Agent
and Letting Agent

[dexters.co.uk](https://www.dexters.co.uk)