



Connells

Clifden Road
Worminghall Aylesbury

Clifden Road Worminghall Aylesbury HP18 9JP

For Sale Offers Over
£750,000



Property Description

As you step through the front door, a welcoming and spacious entrance hall immediately sets the tone for the light-filled and versatile accommodation throughout. The dual-aspect lounge, with french doors opening directly onto the garden, provides a tranquil retreat.

Beyond the lounge is the stunning open-plan kitchen and dining area—a true showpiece, complete with a feature roof lantern, sleek high-end integrated appliances, and french doors that connect seamlessly to the landscaped garden. This exceptional space is designed with both family living and entertaining in mind. Adjacent to the kitchen is a well-equipped utility room, the ground floor also benefits from a study and a contemporary cloakroom with WC.

Upstairs, you'll find four generously proportioned double bedrooms, complemented by a modern family bathroom, an elegant shower room, and a further separate WC.

Outside, the beautifully maintained garden offers excellent privacy, with a

generous patio area accessible from both the kitchen and lounge creating a seamless flow from indoor to outdoor living. The front aspect features additional lawned gardens, a double garage, and ample driveway parking.

One of the home's most desirable advantages is its prime position within the catchment area for the highly regarded Aylesbury Grammar Schools. Families seeking access to some of Buckinghamshire's most prestigious education will find this location truly second to none.

Kitchen/Breakfast Room

11' 11" x 19' 3" (3.63m x 5.87m)

Utility

9' 5" x 9' 5" (2.87m x 2.87m)

Dining Room

9' 5" x 10' 6" (2.87m x 3.20m)

Sitting Room

24' 1" x 11' 11" (7.34m x 3.63m)

Hall

14' 4" x 10' 11" (4.37m x 3.33m)

Study

9' 10" x 10' 5" (3.00m x 3.17m)

W.C.

3' 1" x 6' 3" (0.94m x 1.91m)

Garage

21' 4" x 20' 9" (6.50m x 6.32m)

Landing

5' 9" x 19' 4" (1.75m x 5.89m)

W.C.

3' 9" x 4' 1" (1.14m x 1.24m)

Bedroom One

11' 6" x 14' 6" (3.51m x 4.42m)

Bedroom Two

16' 9" x 9' 10" (5.11m x 3.00m)

Bedroom Three

9' 3" x 14' 5" (2.82m x 4.39m)

Bedroom Four

12' 6" x 12' (3.81m x 3.66m)

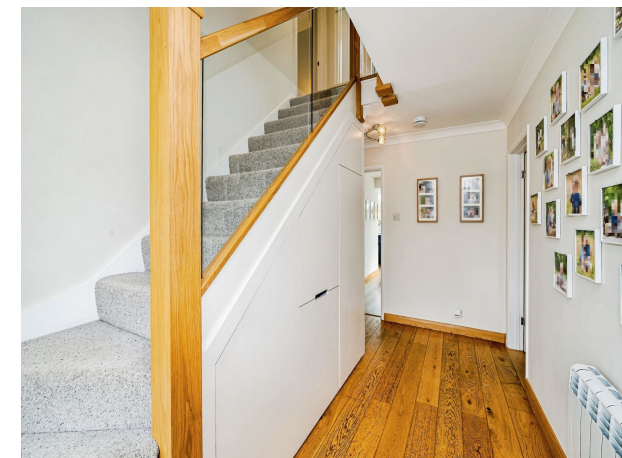
Shower Room

5' 3" x 5' 11" (1.60m x 1.80m)

Bathroom

5' 7" x 7' 10" (1.70m x 2.39m)





This floor plan is for illustrative purposes only. It is not drawn to scale. Any measurements, floor areas (including any total floor area), openings and orientation are approximate. No details are guaranteed, they cannot be relied upon for any purpose and they do not form part of any agreement. No liability is taken for any error, omission or misstatement. A party must rely upon its own inspection(s). Powered by www.focalagent.com

To view this property please contact Connells on

T 01844 260000
E thame@connells.co.uk

103 High Street
 THAME OX9 3DZ

EPC Rating: F Council Tax
 Band: G

view this property online connells.co.uk/Property/THM307119

Tenure: Freehold



1. MONEY LAUNDERING REGULATIONS Intending purchasers will be asked to produce identification documentation at a later stage and we would ask for your co-operation in order that there will be no delay in agreeing the sale. 2. These particulars do not constitute part or all of an offer or contract. 3. The measurements indicated are supplied for guidance only and as such must be considered incorrect. Potential buyers are advised to recheck measurements before committing to any expense. 4. We have not tested any apparatus, equipment, fixtures, fittings or services and it is in the buyers interest to check the working condition of any appliances.

Connells Residential is registered in England and Wales under company number 1489613, Registered Office is Cumbria House, 16-20 Hockliffe Street, Leighton Buzzard, Bedfordshire, LU7 1GN. VAT Registration Number is 500 2481 05.

See all our properties at www.connells.co.uk | www.rightmove.co.uk | www.zoopla.co.uk

Property Ref: THM307119 - 0020