



## Flat 4, 67 Station Road, Sidcup

£1,350 pcm Leasehold

Off-road parking • Gated driveway • Front garden • Period features • Large windows • Ample natural light •  
Modern integrated appliances • Wooden countertops • Modern bathroom fixtures • Wooden flooring • Close to  
Sidcup RR Station



Charming one bed flat with period features, modern finish, wooden floors, integrated kitchen, off-road parking, near Sidcup BR Station and local amenities. Available Now!

Council Tax band: C

Tenure: Leasehold

EPC Energy Efficiency Rating: C

EPC Environmental Impact Rating: C

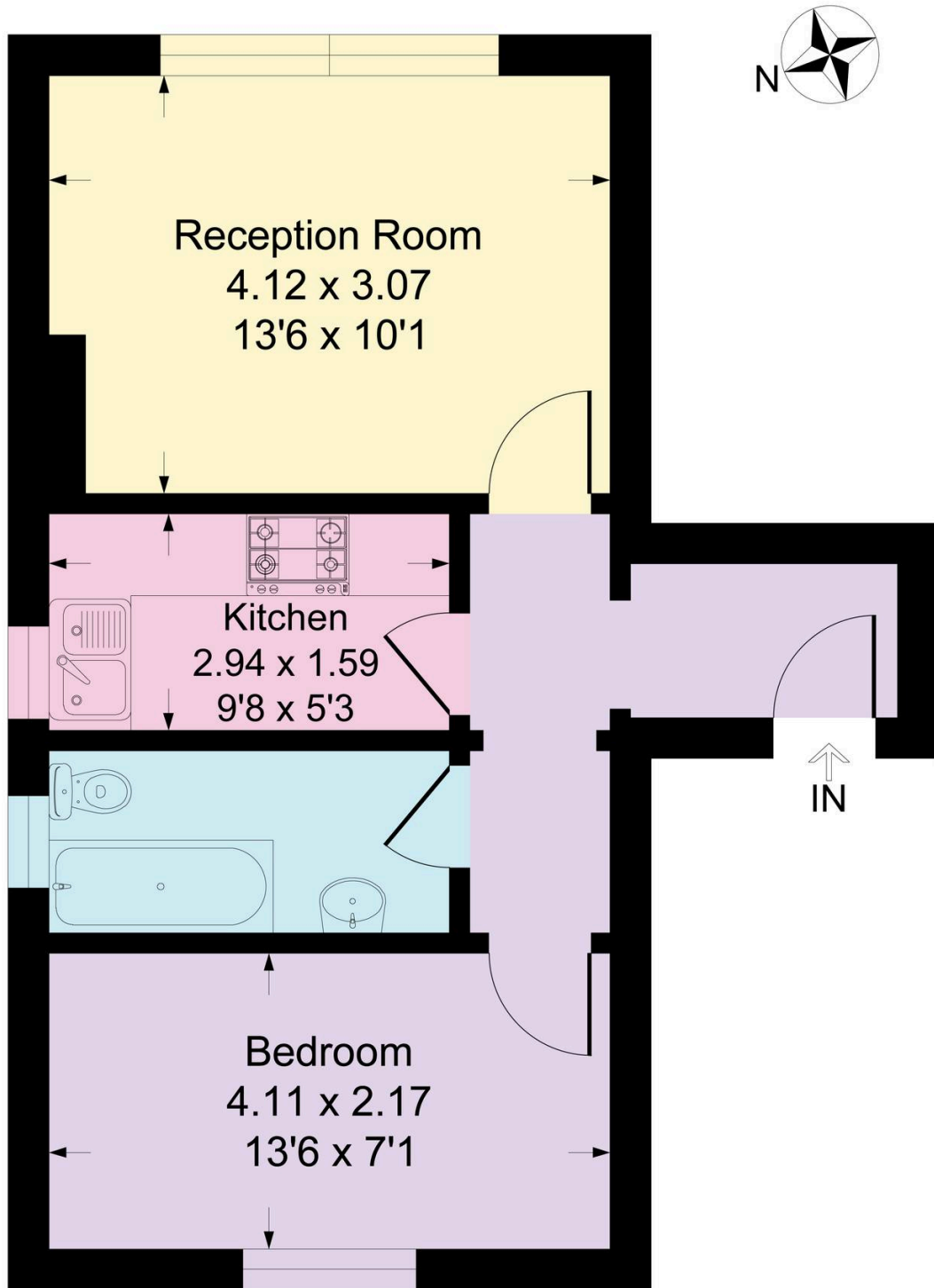


- › Off-road parking
- › Gated driveway
- › Front garden
- › Period features
- › Large windows
- › Ample natural light
- › Modern integrated appliances
- › Wooden countertops
- › Modern bathroom fixtures
- › Wooden flooring
- › Close to Sidcup BR Station



# Station Road, DA15

Approximate Gross Internal Area = 37.8 sq m / 408 sq ft



## First Floor



This plan is for layout guidance only. Not drawn to scale unless stated. Windows and door openings are approximate. Whilst every care is taken in the preparation of this plan, please check all dimensions, shapes and compass bearings before making any decisions reliant upon them.

Produced By Planpix

You can include any text here. The text can be modified upon generating your brochure.

