



Westwood Gardens, Choppington, NE62 5YF

Offers Over £220,000

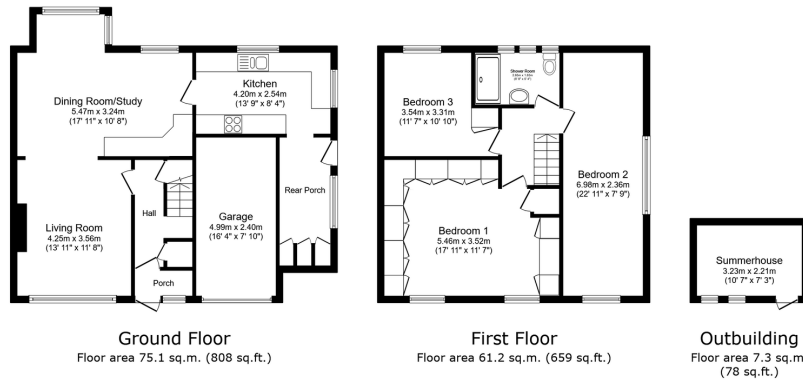
🛏 3 🚿 1 🚻 2



- Extended Semi-Detached Family Home
- Three Double Bedrooms
- Generous Double Reception Room & Well Appointed Kitchen
- South & West Facing Wrap Around Garden
- Cul-De-Sac Location
- Impressive Corner Plot
- Modern First Floor Shower Room
- Triple Driveway
- Solar Panels & Air Source Heat Pump
- Well Presented Throughout



Tucked away in a quiet cul-de-sac location, this beautifully extended semi-detached family home sits proudly on an impressive corner plot, offering space inside & out, along with modern eco-friendly features. The property boasts three generous double bedrooms and a modern first floor shower room, perfectly suited to growing families. The ground floor provides a spacious double reception room and a well-appointed kitchen, creating versatile living and entertaining spaces. Externally, this home truly excels: a triple driveway provides ample off-street parking, while the wrap-around South & West facing garden offers fantastic outdoor space, ideal for enjoying the sunshine throughout the day. Additional benefits include solar panels and an air source heat pump, ensuring efficiency and sustainability. Well-presented throughout and set in a desirable residential spot, this is a home that combines practicality, comfort and future-ready living.



Total floor area: 143.6 sq.m. (1,546 sq.ft.)

This floor plan is for illustrative purposes only. It is not drawn to scale. Any measurements, floor areas (including any total floor area), openings and orientations are approximate. No details are guaranteed, they cannot be relied upon for any purpose and do not form any part of any agreement. No liability is taken for any error, omission or misstatement. A party must rely upon its own inspection(s). Powered by www.propertybox.co.uk



eXp World UK Ltd is a registered company at Level 37, 25 Canada Square, London, E14 5LQ.

Registered company number is 12016573. VAT Registration Number is 327 4120 29