



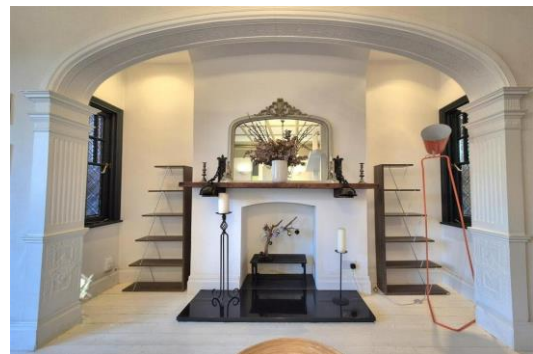
Heathfield Park

London, NW2

£2,643 per month
(£609.92 per week)

A beautifully presented ground floor garden flat set within an impressive linked-detached period property, ideally located in the heart of Willesden Green.

CHESTERTONS



Heathfield Park

London, NW2

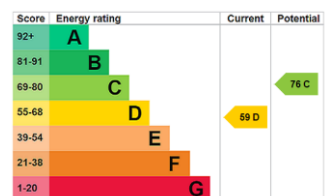
- Gorgeous One Bedroom Apartment
- Own Entrance
- Garden
- Stunning Ceilings
- Unique Property



A beautifully presented ground floor garden flat set within an impressive linked-detached period property, ideally located in the heart of Willesden Green. The flat offers a generous amount of well-proportioned living space, including a generous 22ft reception/dining room, a spacious double bedroom, a separate kitchen, a bathroom with a separate shower cubicle, an additional WC, and exclusive use of a private front garden/outdoor space.

The property is offered furnished and features gas central heating, attractive Victorian tiled flooring, and wooden floors throughout.

Minimum Term: 12 months
Deposit Required: 5 weeks
Local Authority: London Borough of Brent
Council Tax Band: C
EPC Rating: D
Furnished



Chestertons Little Venice Lettings

26 Clifton Road
Maida Vale
London
W9 1SX
littlevenicelettingsusers@chestertons.co.uk
02072662369
chestertons.co.uk

Additional tenant charges apply (fees apply to non-AST tenancies only)
Tenancy Agreement Fee: £300
References per Tenant/Guarantor: £60
Inventory check (approx. £100 – £250 inc. VAT)
chestertons.co.uk/property-to-rent/applicable-fees

