

Location:

The apartment is moments away from the wide array of shops and restaurants Acton has to offer on the High Street and Churchfield Road. Local transport links include Acton Town tube station (Piccadilly and District Lines), Acton Central (Overground) and Acton Mainline (Elizabeth Line).

Key points:

- Two bedrooms
- Two bathrooms
- Third floor apartment
- South-facing aspect
- 795 sq ft / 73.9 sq m
- Modern development - built in 2019
- No onward chain

Do Better:

Acton

sales@astonrowe.co.uk

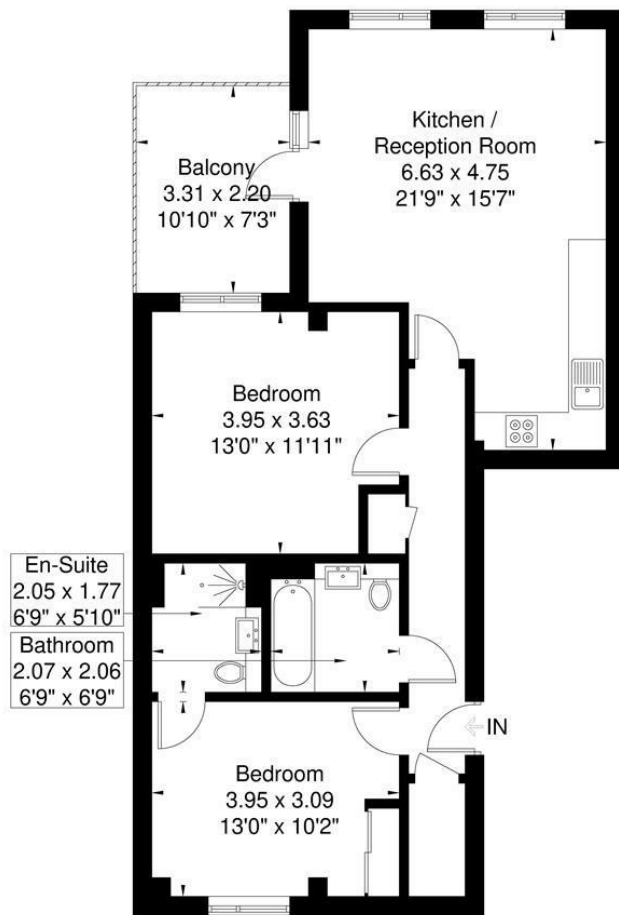
57-59 Churchfield Road, Acton, London, W3 6AY

020 8992 3600

Aston Rowe



Dauphine House
Approximate Gross Internal Area = 73.9 sq m / 795 sq ft



Although every attempt has been made to ensure accuracy, all measurements are approximate. The floorplan is for illustrative purposes only and not to scale.
© www.perspective.co.uk

£550,000

Salisbury Street, London W3 8NW

Energy Efficiency Rating		Environmental Impact (CO ₂) Rating	
Current	Potential	Current	Potential
84	84		

England & Wales EU Directive 2002/91/EC

- 1 Reception Rooms
- 2 Bedrooms
- 2 Bathrooms



The current owner says:

The apartment is in a fantastic location for the local shops, schools, parks and transport links.

A beautifully presented two bedroom, third floor apartment set within the popular Old Town Hall Development in Acton.

The property is positioned on the third floor and comprises of a two equally good sized bedrooms, two bathrooms (one en-suite) and a bright and spacious open-plan kitchen/living area with dining space. The reception room offers doors out into a private balcony overlooking the well maintained communal gardens.

The apartment is moments away from the wide array of shops and restaurants Acton has to offer on the High Street and Churchfield Road. Local transport links include Acton Town tube station (Piccadilly and District Lines), Acton Central (Overground) and Acton Mainline (Elizabeth Line) as well as excellent bus services to nearby Shepherds Bush, Chiswick, and Hammersmith. The M4 and M40 motorway routes are also easily accessible.

What's better:

A beautifully presented two bedroom, third floor apartment set within the popular Old Town Hall Development in Acton.

