



DALES & PEAKS

4, Baileys Mill Bentley Brook

, Matlock, DE4 5NR

Offers In The Region Of £175,000



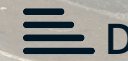
2



1



2



D

4, Baileys Mill Bentley

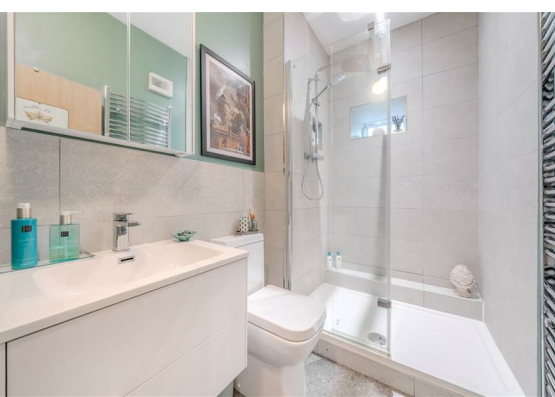
, Matlock, DE4 5NR

Situated on the ground floor of Baileys Mill is this 2 bedroom apartment, which has been refurbished throughout with a new kitchen and bathroom, whilst maintaining period features. Offering 667 sqft of living accommodation the apartment also benefits from secondary glazing, allocated off street parking, personal access to the patio seating area alongside the weir and Bentley Brook and is located within close proximity of local amenities.

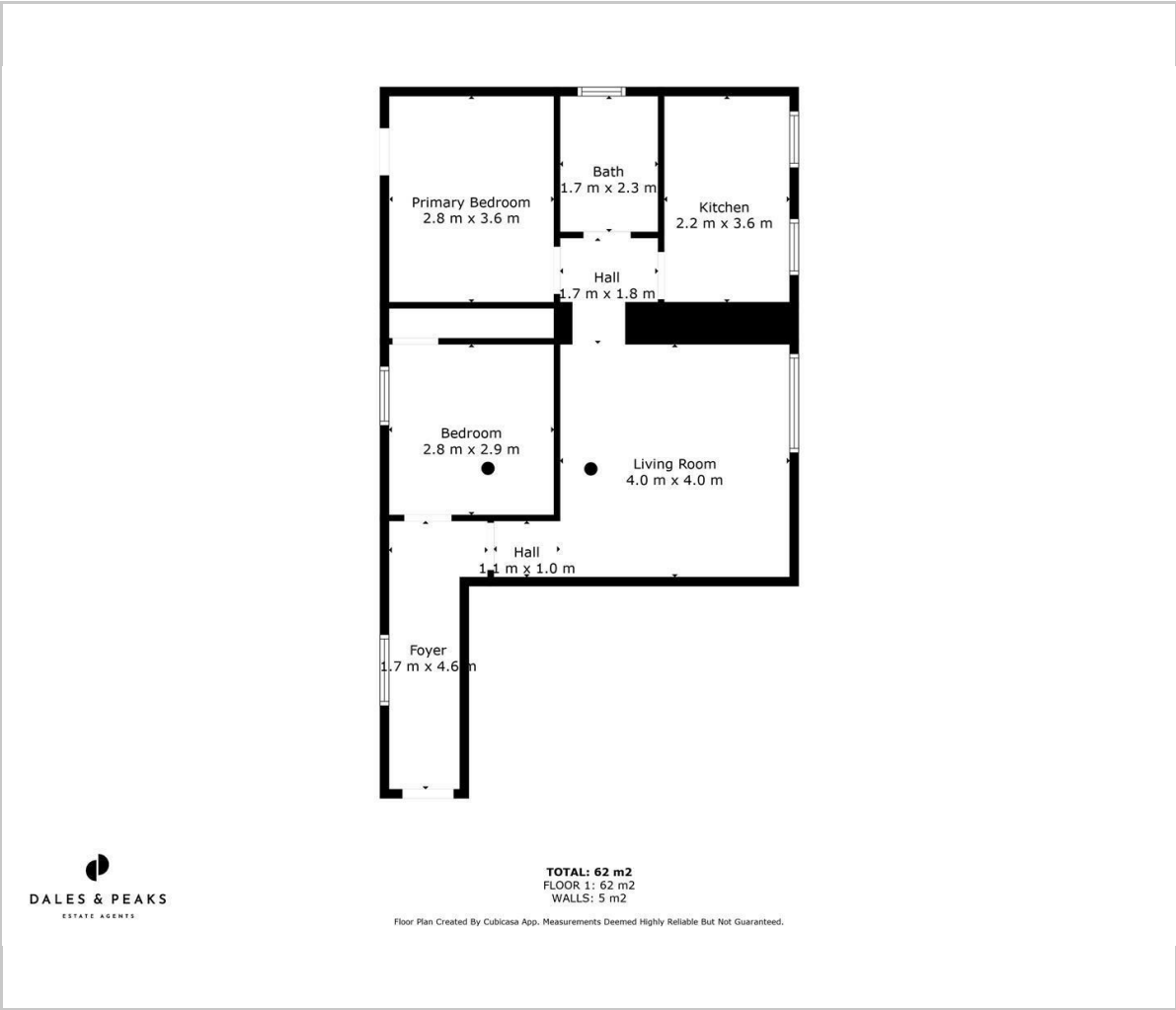
The property comprises; Entrance hallway, modern kitchen with integrated appliances, living room, two double bedrooms and main shower room.

Dales and Peaks ForwardMove
- Please read





Floor Plan



Viewing

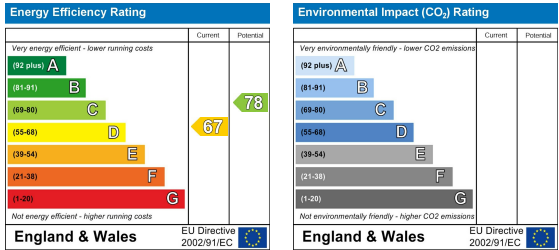
Please contact our Matlock Office on 01629 700246 if you wish to arrange a viewing appointment for this property or require further information.

These particulars, whilst believed to be accurate are set out as a general outline only for guidance and do not constitute any part of an offer or contract. Intending purchasers should not rely on them as statements of representation of fact, but must satisfy themselves by inspection or otherwise as to their accuracy. No person in this firms employment has the authority to make or give any representation or warranty in respect of the property.

Area Map



Energy Efficiency Graph



2 Dale Road, Matlock, Derbyshire, DE4 3LT
T: 01629 700246



E: info@dalesandpeaks.co.uk
www.dalesandpeaks.co.uk