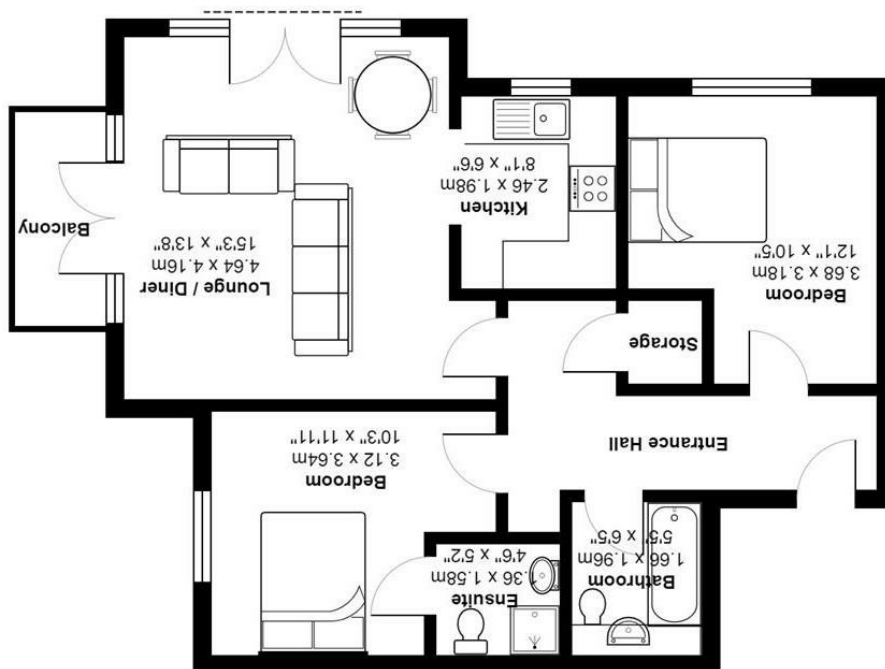




Total Area: 63.7 m² ... 686 ft² (excluding balcony)
 All measurements and furniture are approximate and for display purposes only



Head Court, Goodman Crescent, CR0 2ND



Enhanced Image



8 GOODMAN CRESCENT, CROYDON CR0 2ND

GUIDE PRICE £270,000

CHAIN FREE!!
GUIDE PRICE £270,000 - £300,000

CALL TODAY TO ARRANGE A VIEWING ON THIS FANTASTIC 2 DOUBLE BEDROOM TOP FLOOR APARTMENT LOCATED WITHIN A MILE OF BOTH WEST CROYDON AND SELHURST'S HOST OF AMENITIES INCLUDING SHOPS, SCHOOLS, RESTAURANTS AND TRANSPORT FACILITIES.

THE PROPERTY BENEFITS FROM A SUPERB LOUNGE/DINER WITH VIEWS OVER THE COMMUNAL GROUNDS AND RESIDENTS PARKING, ALL FROM THE COMFORT OF YOUR OWN BALCONY. "PERFECT PLACE FOR A MORNING COFFEE". THE KITCHEN OFFERS AN ARRAY OF CUPBOARDS, WALL UNITS AND APPLIANCES OPENING DIRECTLY FROM THE LOUNGE AREA.

THE MASTER BEDROOM BENEFITS FROM AN EN-SUITE SHOWER ROOM WHILST THE FAMILY BATHROOM AND BEDROOM TWO ARE ALSO FOUND OFF THE IMPRESSIVE HALLWAY WHICH INCLUDES A LARGE STORAGE CUPBOARD "IDEAL FOR SUITCASES AND HOME APPLIANCES".

FOR MORE INFORMATION AND TO ARRANGE A VIEWING ON THIS IMPRESSIVE APARTMENT, CONTACT CHRISTIES TODAY ON 020 8643 7777.

****DISCLAIMER****
THE OWNERS OF THIS PROPERTY ARE RELATED TO A MEMBER OF CHRISTIES & CENTRO PLC.

- NO ONWARD CHAIN
- TOP FLOOR APARTMENT
- 2 DOUBLE BEDROOMS
- TRAIN, TRAM & OVERGROUND SERVICES WITHIN A MILE
- RESIDENTS PARKING
- EPC RATING C
- COUNCIL TAX BAND C
- GROUND RENT £258 PA (SUBJECT TO CHANGE)
- LEASE - 105 YEARS REMAINING
- SERVICE CHARGES £2097 PA (SUBJECT TO CHANGE)

