
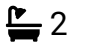



Crewys Road, NW2

£1,200,000

 4  2  2



Tucked away on this peaceful, tree-lined residential street, this beautifully renovated family home offers a thoughtful blend of character. Arranged over three floors, the house provides four bedrooms, two bathrooms, an office, utility room and a wonderful south-facing garden with a garden studio. Just a short walk away, Hampstead Heath offers acres of open space to explore, while nearby Golders Hill Park is perfect for peaceful walks or time outdoors with furry friends.

Oli & Liana are delighted to be instructed as sole agents for this wonderful family home.

Key Features

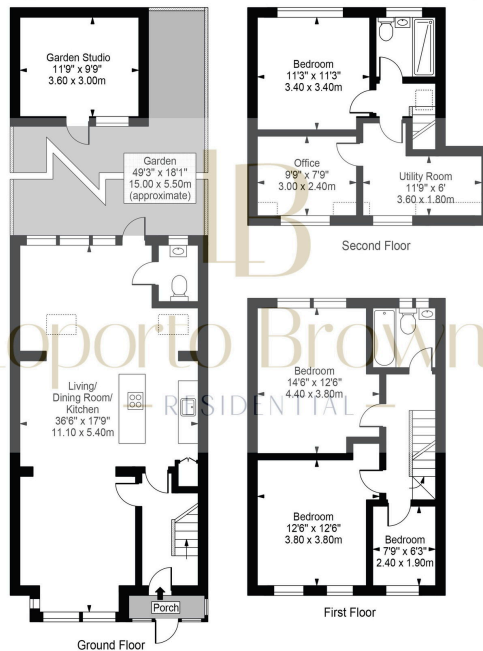
- South-facing garden with mature planting, frog pond and garden studio
- Peaceful, tree-lined residential street with a strong family feel
- German-designed GGM kitchen with colourful tiles and generous dining area
- Loft conversion forming a principal suite with bathroom, office and utility room
- Excellent amenities on Finchley Road and easy access to Golders Green (Northern Line)
- Beautifully renovated four-bedroom family home arranged over three floors
- Elegant double reception room with shutters creating a warm living space
- Ground floor extension opening to a playroom and the garden
- Close to Hampstead Heath, Golders Hill Park and the hidden gem of Childs Hill Park
- Oli & Liana are delighted to be instructed as sole agents for this wonderful family home

Crewys Road

Approx. Gross Internal Area 1483 Sq Ft - 137.82 Sq M
(Including Restricted Height Area & Excluding Garden Studio)

Approx. Gross Internal Area 1468 Sq Ft - 136.34 Sq M
(Excluding Restricted Height Area & Garden Studio)

Approx. Gross Internal Area Of Garden Studio 116 Sq Ft - 10.80 Sq M



For Illustration Purposes Only - Not To Scale

This floor plan should be used as a general outline for guidance only and does not constitute in whole or in part an offer or contract. Any intending purchaser or lessee should satisfy themselves by inspection, searches, enquiries and full survey as to the correctness of each statement. Any areas, measurements or distances quoted are approximate and should not be used to value a property or be the basis of any sale or let.