



Bedroom 3

Greenford Gardens | | Worcester | WR2 6HQ

£685 PCM



Bedroom 3

Greenford Gardens |
Worcester | WR2 6HQ
£685 PCM

Nestled in the desirable area of Greenford Gardens, Worcester, this remarkable house offers an exceptional living experience for professionals and families alike. With six generously sized bedrooms, each boasting its own en-suite bathroom, this property ensures both comfort and privacy for all residents.

Upon entering, you are greeted by a spacious reception room that serves as the heart of the home, perfect for entertaining guests or enjoying quiet evenings. The layout is thoughtfully designed to maximise space and light, creating a warm and inviting atmosphere throughout.

The en-suite bathrooms are a standout feature, providing modern fixtures and finishes that enhance the overall luxury of the property. This arrangement is particularly advantageous for those who value convenience and personal space.

- 6 en-suite bedrooms
- Located in Greenford Gardens
- Modern house design
- Easy access to transport
- Quiet residential area
- Spacious reception room
- Ideal for professionals
- Close to local amenities
- Perfect for large families
- Viewing recommended

Living Room

13'10" x 11'4" (4.2m x 3.5m)

This charming living room offers a welcoming and comfortable space, featuring a modern fireplace as a focal point. Large windows fill the room with natural light, enhancing the warm wooden flooring that extends throughout. The room flows effortlessly into the kitchen, creating an open-plan feel that is perfect for entertaining.





Kitchen

10'9" x 9'6" (3.3m x 2.9m)

The kitchen is a stylish and practical space, fitted with sage green cabinetry and contrasting brass handles. White subway tiles provide a classic splashback, while integrated appliances and a sleek countertop offer plenty of preparation space. Double doors open directly onto the rear garden, allowing for easy indoor-outdoor living.

Landing

The first-floor landing provides access to the bedrooms and bathrooms, with a clean and neutral décor. The area is bright and airy, with a simple mirror adding depth and light.

WC

The WC on the ground floor is compact yet practical, featuring modern fixtures and a light wood-effect floor. The white walls and simple décor create a fresh and clean feel.

Bedroom 1

11'6" x 10'1" (3.5m x 3.1m)

This bedroom is a peaceful retreat with a green accent wall and soft grey carpeting. Sliding doors reveal built-in storage, providing ample space to keep the room tidy. The natural light from the window adds to the calm and restful atmosphere.

Ensuite

The ensuite bathroom is beautifully finished with white walls and a walk-in shower. It features a sleek modern vanity unit with storage beneath the basin, along with a heated towel rail for added comfort.

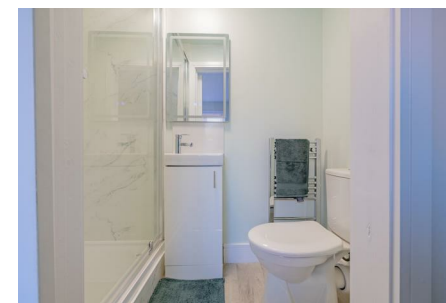
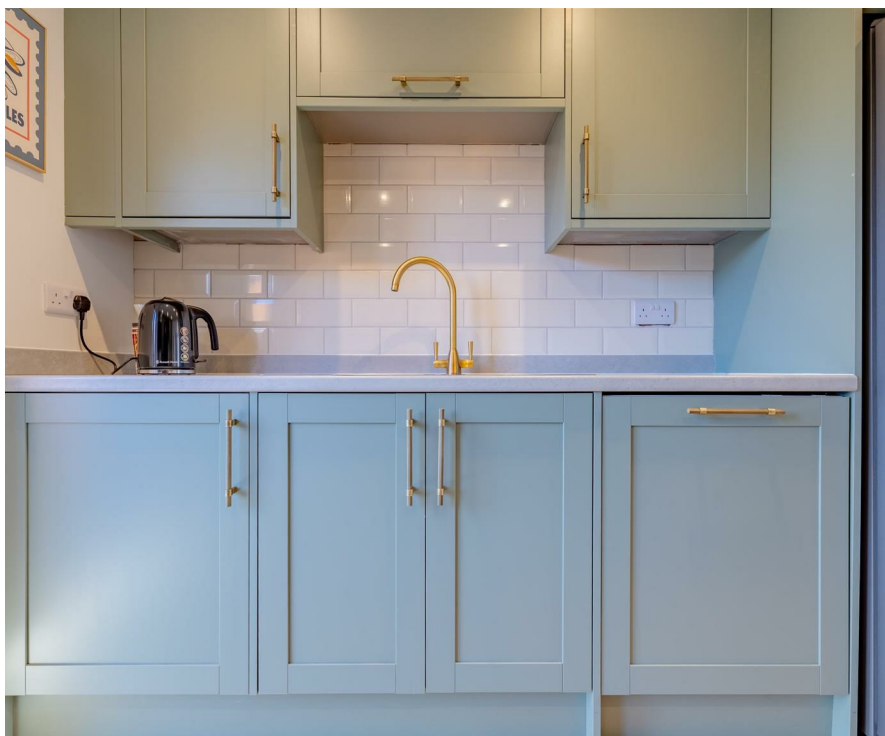


Front Exterior

The front exterior presents a well-maintained brick-built semi-detached home in a quiet residential corner position. The driveway offers ample off-street parking, and a small, neat lawn adds a touch of greenery to the frontage. The corner plot is spacious, with fencing enclosing the rear garden and providing privacy.

Rear Garden

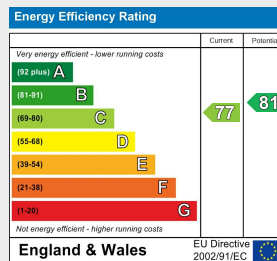
The rear garden is generously sized and fully enclosed with new fencing, creating a secure and private outdoor space. The garden is laid mainly with gravel for easy maintenance, while a small paved patio area offers a spot for seating or entertaining.





Whilst every attempt has been made to ensure the accuracy of the floorplan contained here, measurements of doors, windows, rooms and any other items are approximate and no responsibility is taken for any error, omission or mis-statement. This plan is for illustrative purposes only and should be used as such by any prospective purchaser. The services, systems and appliances shown have not been tested and no guarantee as to their operability or efficiency can be given.
Made with Metropix ©2025

Council Tax Band EPC Rating C



58, London Road Worcester
Worcestershire
WR5 2DS
01905 935958
hello@yourpropertybox.co.uk
www.yourpropertybox.co.uk