



Hurn Lane, Ringwood, BH24 2AQ

This delightful detached bungalow occupies a generous plot of approximately one-third of an acre in one of the area's most sought-after locations, bordering the prestigious Avon Castle.

Situated on the edge of the vibrant market town of Ringwood, the property enjoys excellent transport connections to Bournemouth, Poole, Salisbury, and Southampton. Both Bournemouth and Southampton offer mainline train stations and international airports, while sailing enthusiasts will appreciate the nearby coastal resorts of Poole, Christchurch, and Lymington. The golden beaches of Bournemouth and the scenic New Forest National Park are also within easy reach.

Within walking distance of Ringwood town centre, the home also benefits from direct access to the Castleman Trailway—ideal for outdoor pursuits. Families will value its position within the highly regarded Ringwood School catchment area. The bungalow itself is beautifully presented and maintained to a high standard, with significant potential for extension (STPP) thanks to its prime location and generous plot.

Accommodation comprises two to three bedrooms, with one room offering flexibility as a dining space. The master bedroom features a stylish en-suite, while the modern family bathroom includes an over-bath shower and screen. A spacious, contemporary kitchen with breakfast area is complemented by an adjoining utility room, providing ample space for laundry appliances.

Externally, the property boasts a large driveway with plentiful parking and a detached double garage. Side access leads to a private rear garden that enjoys open views across countryside and water meadows. The landscaped grounds are attractively maintained with mature planting and secure boundaries, while a patio area creates the perfect setting for outdoor entertaining.

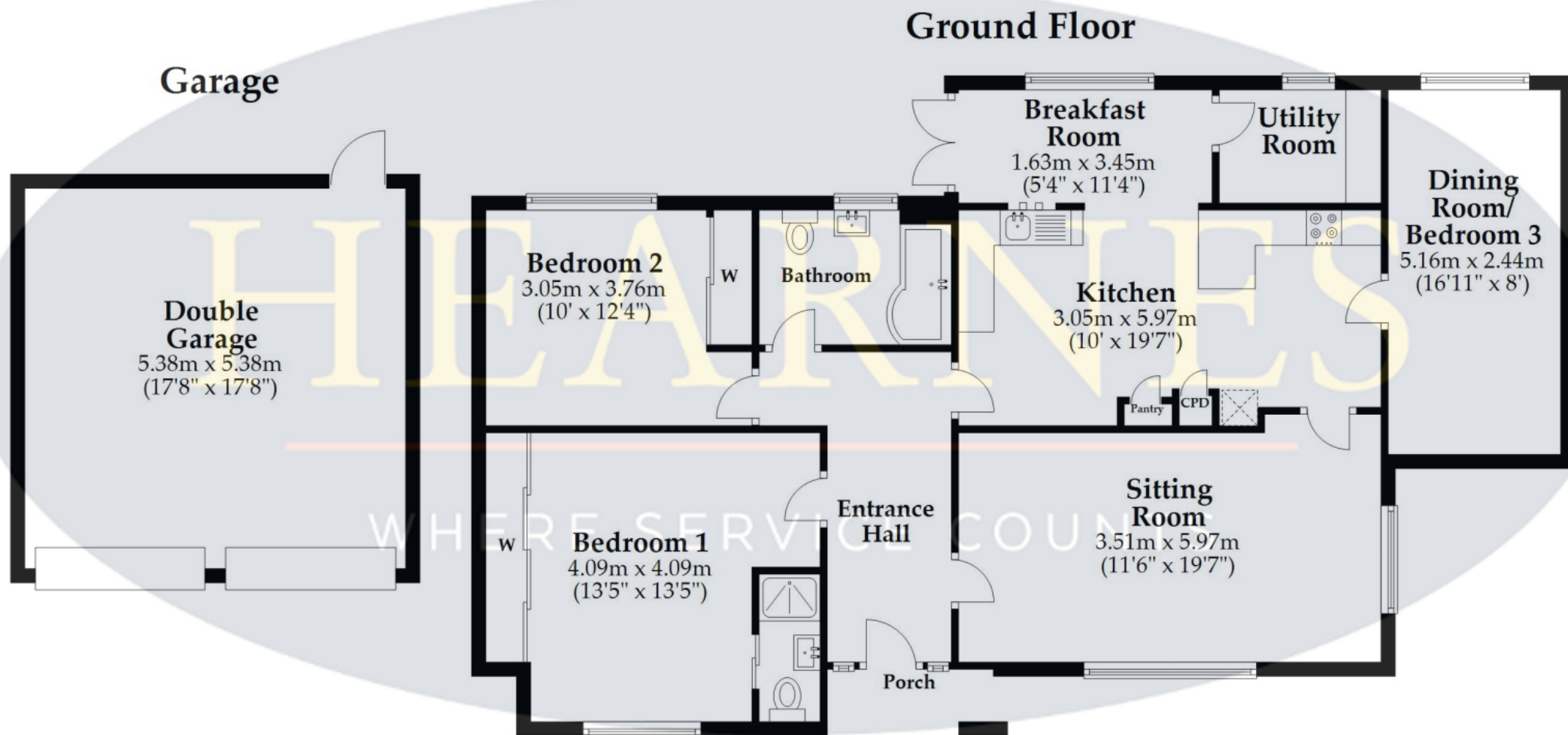
Local Authority: Dorset

Council Tax Band: F

Energy Performance Certificate: Rating D



Note: Measurements were not taken by LJT Surveying and we cannot guarantee their accuracy.



This plan is not to scale and is for general guidance only. LJT Surveying Ltd Ringwood



52-54 High Street, Ringwood, Hampshire Tel : Email : anthony@hearnes.com www.hearnes.com

OFFICES ALSO AT: BOURNEMOUTH, FERNDOWN, POOLE & WIMBORNE

