



Cloverdale Court, Anning Road, Lyme Regis DT7 3ED

welcome to

Cloverdale Court, Anning Road, Lyme Regis

Fox & Sons are proud to present this delightful two-bedroom apartment, where breathtaking sea views create a wonderful sense of coastal living. Situated in Cloverdale Court, a highly regarded and well maintained complex of retirement apartments located in the beautiful coastal town of Lyme Regis.

Communal Entrance

Accessed via secure door entry system (the entrance to the left of the flat has a ramp with direct access to the lift), stairs rising to upper floors and lift

Entrance Hallway

Entered via wooden door, doors leading to subsequent rooms, built in storage cupboard housing water tank, wall mounted fuseboard, night storage radiator, ceiling light points

Lounge

uPVC double glazed sliding door to front aspect with Juliet balcony and sea views, space for dining area, night storage radiator, ceiling light points

Kitchen

Range of wall and base units with worktop over and tiled splashback, integrated electric oven with hob and cooker hood over, drainer sink, space for two under counter domestic appliances, ceiling light point

Master Bedroom

uPVC double glazed window to front aspect with sea views, built in wardrobes, night storage radiator, ceiling light point

Bedroom Two

uPVC double glazed window to front aspect with sea views, night storage radiator, ceiling light point

Bathroom

Panel bath with shower over set within tiled surround, hand wash basin with tiled splashback, low level WC, heated towel rail, ceiling light point

Communal Lounge

Communal lounge area with garden access

Communal Gardens

Rear garden:

Laid to lawn, paved path and steps leading to patio seating area with a view to the sea and a range of beautiful trees, flowers and plants

Front garden:

Stunning manicured laid to lawn garden with a range of flowers and plants

Parking

Ample parking with covered section also, outside lighting and tap, numerous storage facilities, recycling area and mobility scooter charging point

Location

Set within Cloverdale Court, a highly regarded and immaculately maintained retirement development, this wonderful home offers both comfort and peace of mind in an enviable setting. Nestled in the heart of the picturesque coastal town of Lyme Regis, the apartment is perfectly positioned to enjoy the beauty, tranquillity, and lifestyle this sought-after location has to offer.





view this property online fox-and-sons.co.uk/Property/AXM104970



welcome to

Cloverdale Court, Anning Road, Lyme Regis

- SPACIOUS TWO BEDROOM APARTMENT
- STUNNING SEA VIEWS
- COUNCIL TAX BAND D
- SOUGHT AFTER RETIREMENT COMPLEX
- ACCESS TO BEAUTIFUL COMMUNAL GARDENS & LOUNGE

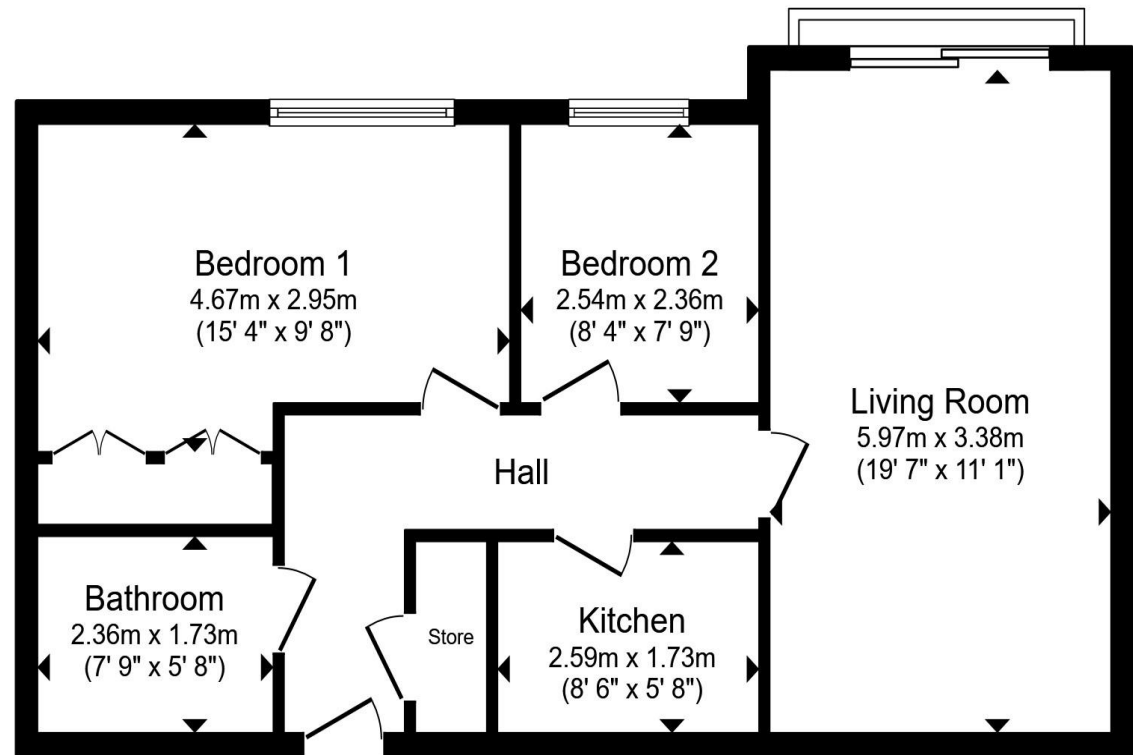
Tenure: Leasehold EPC Rating: C

Council Tax Band: D Service Charge: 5423.73

Ground Rent: Ask Agent

This is a Leasehold property with details as follows; Term of Lease 999 years from 01 Jun 1989. Should you require further information please contact the branch. Please Note additional fees could be incurred for items such as Leasehold packs.

£145,000



Total floor area 59.8 m² (644 sq.ft.) approx

This floor plan is for illustrative purposes only. It is not drawn to scale. Any measurements, floor areas (including any total floor area), openings and orientation are approximate. No details are guaranteed, they cannot be relied upon for any purpose and they do not form part of any agreement. No liability is taken for any error, omission or misstatement. A party must rely upon its own inspection(s). Powered by www.propertybox.io



view this property online fox-and-sons.co.uk/Property/AXM104970



Property Ref:
AXM104970 - 0003

1. MONEY LAUNDERING REGULATIONS Intending purchasers will be asked to produce identification documentation at a later stage and we would ask for your co-operation in order that there is no delay in agreeing the sale. 2. These particulars do not constitute part or all of an offer or contract. 3. The measurements indicated are supplied for guidance only and as such must be considered incorrect. Potential buyers are advised to recheck measurements before committing to any expense. 4. We have not tested any apparatus, equipment, fixtures or services and it is in the buyers interest to check the working condition of any appliances. 5. Where an EPC, or a Home Report (Scotland only) is held for this property, it is available for inspection at the branch by appointment. If you require a printed version of a Home Report, you will need to pay a reasonable production charge reflecting printing and other costs. 6. We are not able to offer an opinion either written or verbal on the content of these reports and this must be obtained from your legal representative. 7. Whilst we take care in preparing these reports, a buyer should ensure that his/her legal representative confirms as soon as possible all matters relating to title including the extent and boundaries of the property and other important matters before exchange of contracts.

Fox & Sons is a trading name of Sequence (UK) Limited which is registered in England and Wales under company number 4268443, Registered Office is Cumbria House, 16-20 Hockliffe Street, Leighton Buzzard, Bedfordshire, LU7 1GN. VAT Registration Number is 500 2481 05.



01297 32323



axminster@fox-and-sons.co.uk



West Street, AXMINSTER, Devon, EX13 5NU



fox-and-sons.co.uk