

# 5 Blacksmiths Cottage Hastingwood Road

Hastingwood, Harlow

Guide Price £525,000

Welcome to Blacksmiths Cottage. Surrounded by Essex countryside and packed with charm and character, this two bedroom Victorian cottage with its lush private garden is a very special place to call home.

Council Tax band: D

Tenure: Freehold

- Two bedroom period cottage
- Driveway
- Character features
- Beautiful private garden
- Surrounded by Essex Countryside
- Easy access to M11
- Short drive to Epping & Harlow



**Entrance Porch**

**Living Room**

12' 0" x 11' 6" (3.66m x 3.50m)

**Hallway**

**Kitchen**

17' 0" x 14' 11" (5.17m x 4.54m)

**Conservatory**

12' 6" x 8' 3" (3.81m x 2.51m)

**Bathroom**

**Study**

4' 8" x 12' 4" (1.41m x 3.77m)

**Bedroom**

11' 5" x 11' 11" (3.48m x 3.62m)

**Bedroom**

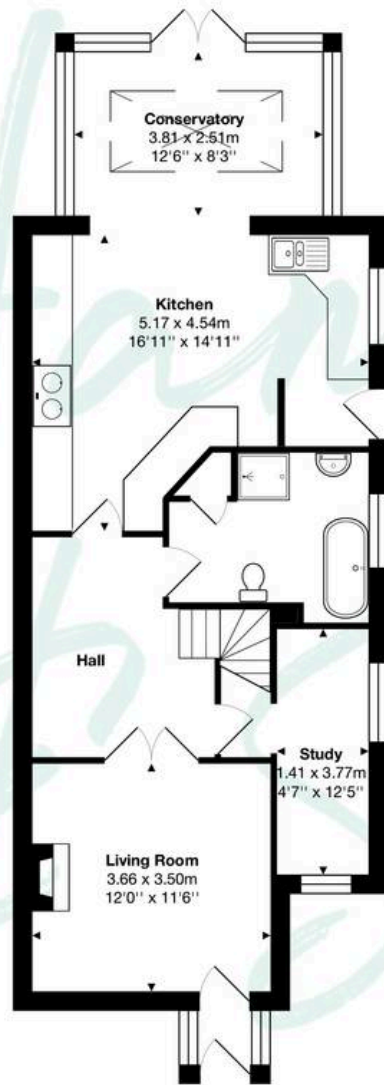
8' 10" x 7' 1" (2.68m x 2.16m)

**Office**

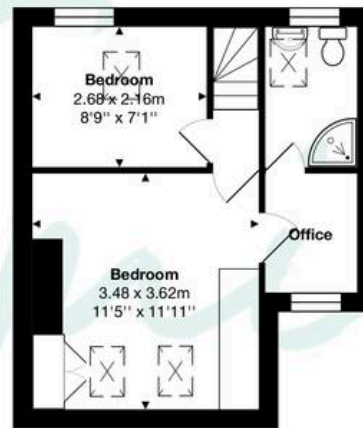
**Shower Room**



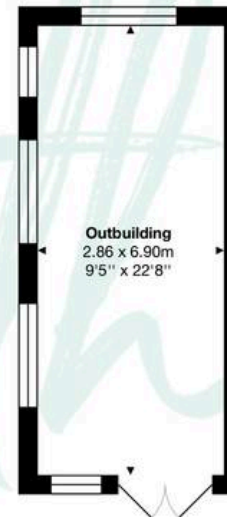




Ground Floor



First Floor



Outbuilding

Total Area: 115.3 m<sup>2</sup> ... 1241 ft<sup>2</sup>

THE FLOORPLAN IS FOR ILLUSTRATIVE PURPOSES ONLY AND IS NOT TO SCALE.  
 Measurements and features are approximate and may differ from the actual property. Verify all details independently; no liability is accepted for errors or omissions.

Property marketing provided by [www.fotomarketing.co.uk](http://www.fotomarketing.co.uk)