



Guide Price
£325,000

Freehold

3x  1x  1x 

**Waterdales, Northfleet,
Gravesend, Kent, DA11**

OVER 60?

Secure this property
for up to **59% less!**

Wards
Helping you move forwards



Main features

- Extended family home in a convenient location
- Potential to add a driveway at the front subject to planning permission
- Private and child friendly rear garden
- Easy access to the motorway and other local amenities
- Wood burner providing a cosy feel

Accommodation

GROUND FLOOR

- Entrance Porch
- Entrance Hall
- Lounge: 21'4 x 17'8 (6.51m x 5.39m)
- Dining Area : 11'3 x 7'7 (3.43m x 2.31m)
- Kitchen: 11'4 x 8'7 (3.46m x 2.62m)

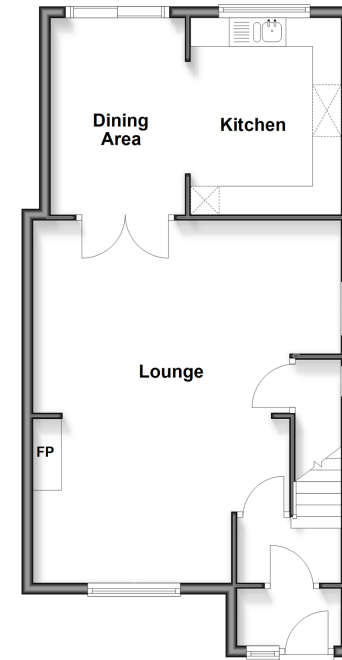
FIRST FLOOR

- Landing
- Bedroom 1: 11'0 x 9'8 (3.36m x 2.95m)
- Bedroom 2: 11'0 x 7'7 (3.36m x 2.31m)
- Bedroom 3: 9'8 x 7'8 (2.95m x 2.34m)
- Bathroom : 9'8 at widest point x 6'6 (2.95m x 1.98m)

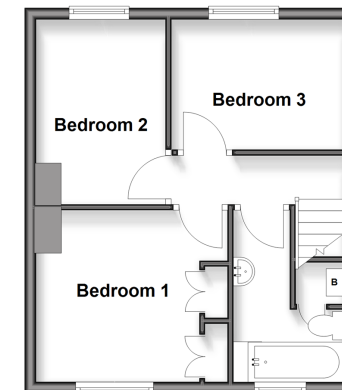
OUTSIDE

- Front Garden
- Rear Garden

Ground Floor
Approx. 54.7 sq. metres (588.7 sq. feet)



First Floor
Approx. 34.5 sq. metres (371.4 sq. feet)



Unable to display material information. Please check with the branch for material information details for this property

