



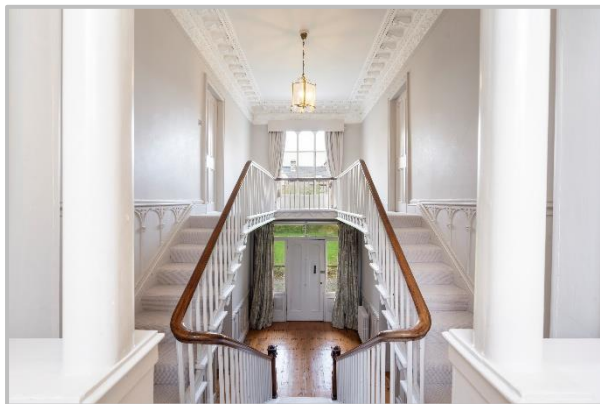
www.chrystals.co.im

Elderbank, The Crofts, Castletown, IM9 1LW
Asking Price £1,250,000

Elderbank, The Crofts, Castletown, IM9 1LW

Asking Price £1,250,000

One of the finest period town houses of the Island, nestled in the conservation area of historic Castletown. Elderbank is a most handsome limestone house with a grand, elegant and welcoming feel, perfect for family living. The principal house has a very impressive entrance hall with bifurcated staircase which leads to 4 Reception Rooms, Wonderful Kitchen, Study, spacious Garden room and Utility Room. There are 5/6 Bedrooms with 3 ensembles and Family Bathroom. Outside is a private, walled garden with automated gates and ample parking for several cars. A personal inspection is strongly recommended.

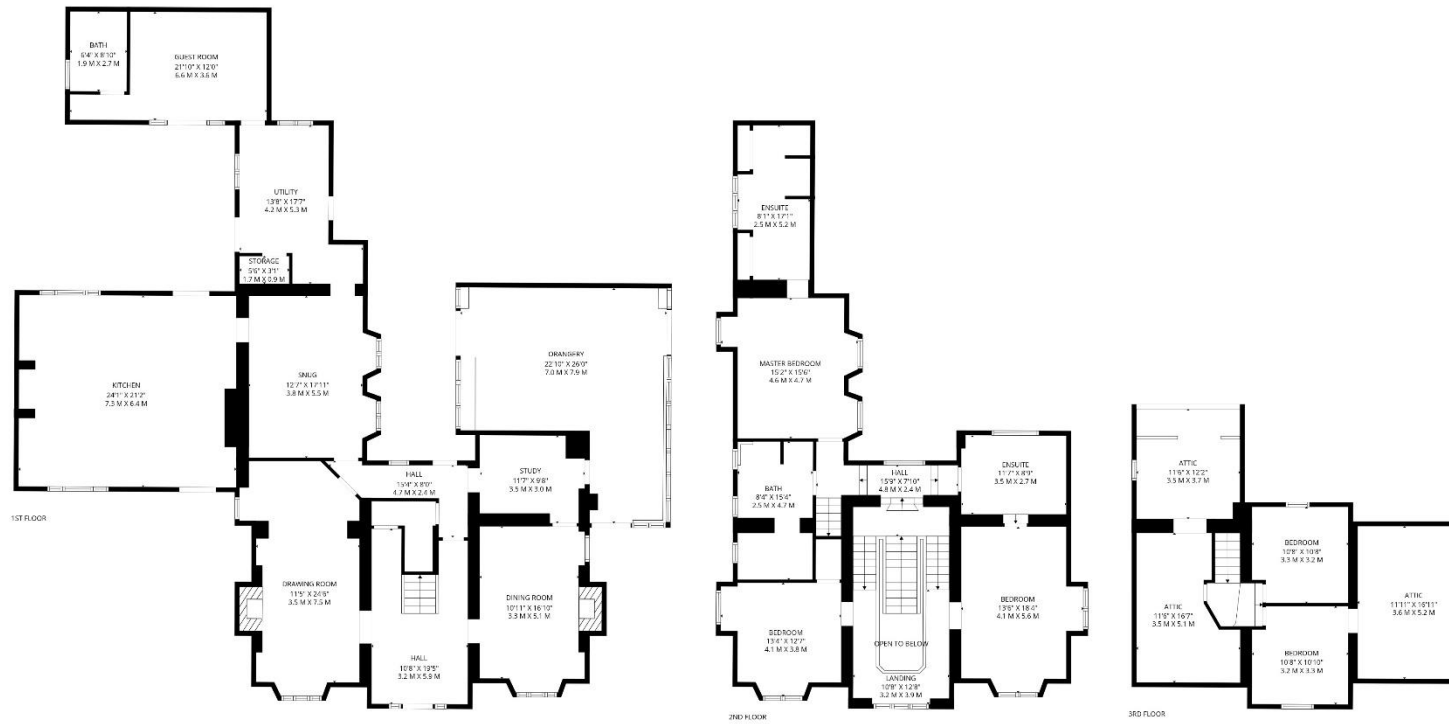












TOTAL: 3660 sq. ft, 340 m2

1st floor: 2034 sq. ft, 189 m2, 2nd floor: 1310 sq. ft, 122 m2, 3rd floor: 316 sq. ft, 29 m2
 EXCLUDED AREAS: ORANGERY: 449 sq. ft, 42 m2, UTILITY: 173 sq. ft, 16 m2, STORAGE: 18 sq. ft, 2 m2,
 FIREPLACE: 22 sq. ft, 2 m2, LOW CEILING: 378 sq. ft, 35 m2, OPEN TO BELOW: 36 sq. ft, 3 m2,
 ATTIC: 145 sq. ft, 14 m2, WALLS: 382 sq. ft, 34 m2



FLOOR PLAN CREATED BY INVISION MEDIA & MARKETING. MEASUREMENTS DEEMED HIGHLY RELIABLE BUT NOT GUARANTEED.

Since 1854



DOUGLAS
 31 Victoria Street
 Douglas IM1 2SE
 T. 01624 623778
 E. douglas@chrystals.co.im

PORT ERIN
 23 Station Road
 Port Erin IM9 6RA
 T. 01624 833903
 E. porterin@chrystals.co.im

COMMERCIAL
 Douglas Office: 01624 625100, commercial@chrystals.co.im

RENTALS
 Douglas Office: 01624 625300, douglasrentals@chrystals.co.im

Directors: Neil Taggart BSc (Hons), M.R.I.C.S.; Joney Kerruish BSc (Hons), M.R.I.C.S.; Dafydd Lewis BSc (Hons), M.R.I.C.S., MA (Cantab), Dip Surv Prac.
 Registered in the Isle of Man No. 34808, Chrystal Bros, Stott & Kerruish Ltd. Trading as Chrystals. Registered Office, 31 Victoria Street, Douglas, Isle of Man IM1 2SE.