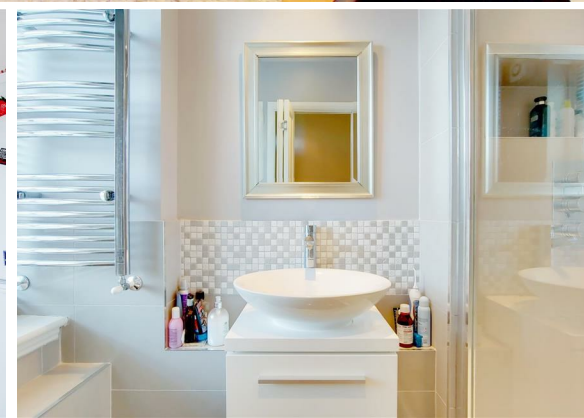




2 Bed  
Apartment  
located in

£2,500 PCM



 ORLANDO REID  
LONDON

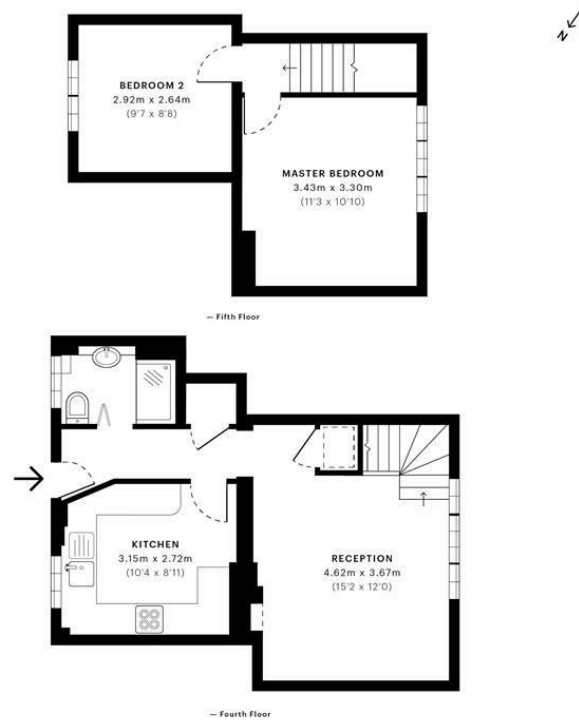


### Alderley House, SW8

CAPTURE DATE:  
23/09/2019

LASER SCAN POINTS:  
28,012,833

GROSS INTERNAL AREA  
54.0 Sqm / 581.4 Sqft



**GROSS INTERNAL AREA**  
The footprint of the property  
54.0 Sqm / 581.4 Sqft

**NET AREA (INTERNAL)**  
Excludes walls and structural features  
49.5 Sqm / 532.4 Sqft

**EXTERNAL STRUCTURAL FEATURES**  
Balconies, terraces, verandas etc.  
0.0 Sqm / 0.0 Sqft

**RESTRICTED HEAD HEIGHT**  
Limited use areas under 1.8m  
0.2 Sqm / 1.7 Sqft

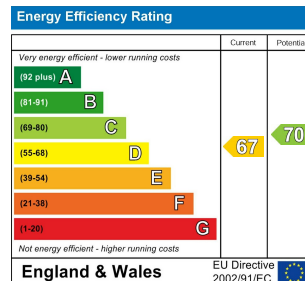


Spec floor plans are produced in accordance with the Royal Institution of Chartered Surveyors' Property Measurement Standards. Plans and gardens are illustrative only and are excluded from all area calculations. Due to rounding, numbers may not add up precisely. All measurements shown for the individual room heights and widths are the maximum points of measurements captured in the scan.

IPMS 3B RESIDENTIAL  
52.2 Sqm / 562.0 Sqft

IPMS 3C RESIDENTIAL  
50.3 Sqm / 538.9 Sqft

SPEC ID:  
5d84b38ffacc640a1a4f57ed



## DIRECTIONS

### CONTACT

1-3 Old Town  
Clapham  
London  
SW4 0JT

E: [lettings@orlandoreid.co.uk](mailto:lettings@orlandoreid.co.uk)  
T: 020 7627 3197  
[www.orlandoreid.co.uk](http://www.orlandoreid.co.uk)

