



Wray Common Road, Reigate

Guide Price £375,000 - £395,000





Located just over a mile from Redhill Train station and less than a mile from Reigate station, this spacious two bedroom apartment is conveniently located for anyone looking to commute to London for work. Tucked away behind the gates, it offers a peaceful atmosphere with beautifully kept grounds.





Guide Price £375,000 - £395,000

Tucked away on Wray Common Road, this prestigious, gated development is well known for its spacious apartments and expansive communal grounds. Located on the first floor, this particular property feels light and airy and with neutral decor throughout, it is ready for someone to move straight in.

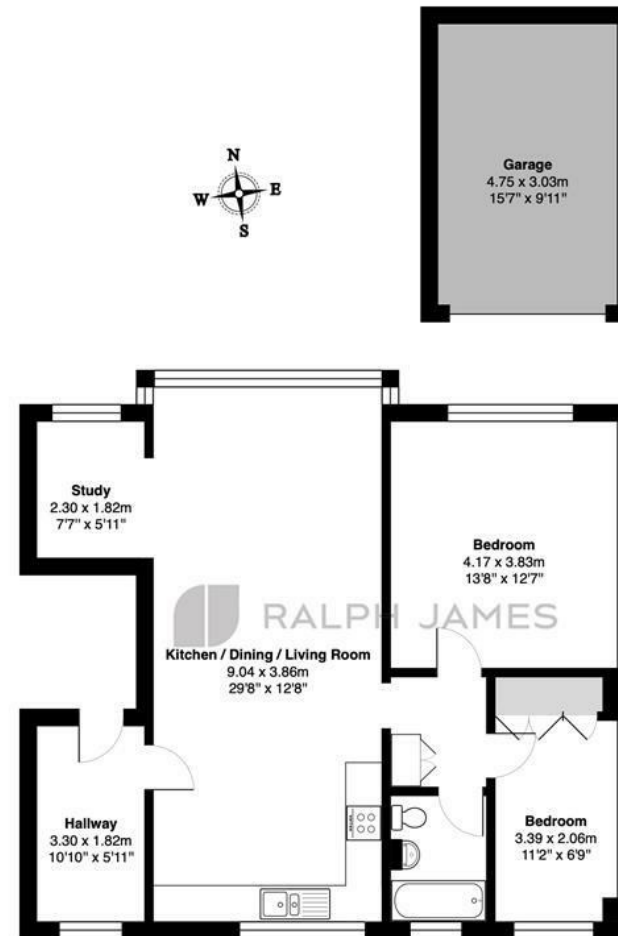
The apartment has a very useful, spacious entrance hallway which is great for storage and even enough room for a Peleton bike! The living space is open plan and spans the whole depth of the property and the large windows really let the light flood in. The living space overlooks the beautiful communal gardens to the rear and the kitchen looks out to the front of the property. A useful nook sits just off the lounge area, providing the perfect spot for home working. Both bedrooms are double rooms, with the main bedroom facing the rear, enjoying the views over the gardens.

Accessed via the electric gates, the property has a garage en bloc and there is plenty of communal residents parking. The grounds are well maintained and wrap around the buildings with ample space to pick a spot to sit and enjoy.



Need to know

- Two double bedroom, first floor apartment
- Large gated communal grounds
- Spacious open plan kitchen, living, dining space
- Lovely views over the communal gardens
- Separate study alcove, perfect for home working
- Large entrance hall, great for extra storage
- Garage en bloc
- Walking distance to both Reigate and Redhill train stations



First Floor

Clairville Court, Wray Common Road, Reigate

Total Area: 79.7 m² ... 858 ft² (excluding garage)

FOR ILLUSTRATIVE PURPOSES ONLY.

Whilst every attempt has been made to ensure the accuracy of the floor plan shown, all measurements, positioning, fixtures, features, fittings and any other data shown are an approximate interpretation for illustrative purposes only and are not to scale.

No responsibility is taken for any error, omission, miss-statement or use of data shown.

The above statement applies to both 'Still Moving London LTD' and the Company or individual displaying this floor plan.

Unauthorised reproduction prohibited.

Â© Still Moving London LTD (www.stillmoving.london)

 RALPH JAMES

Interested?

reigate@ralphjames.co.uk
01737 333677

ralphjames.co.uk