



## Moorhen Drive, NW9

£475,000

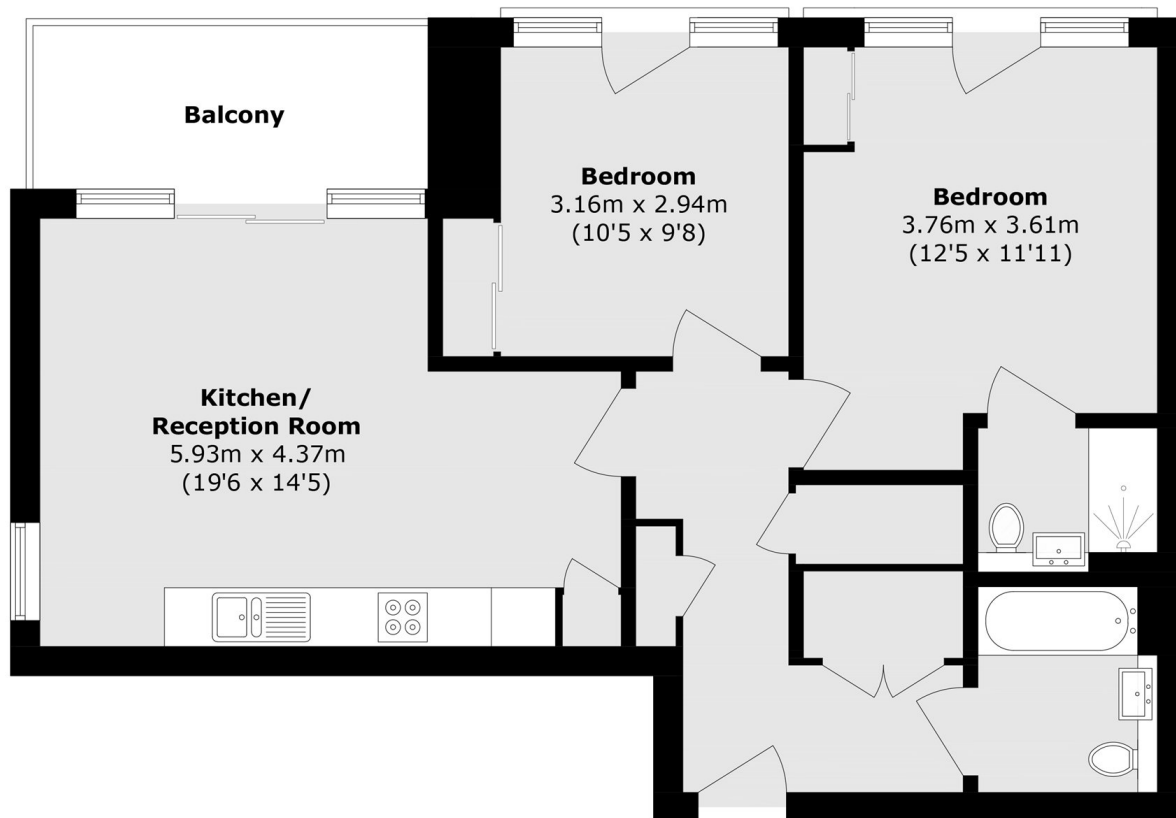
A stunning two double bedroom, two bathroom apartment set within a sought after development. The apartment is in immaculate condition and benefits from a spacious private balcony with uninterrupted panoramic lake views.

This development overlooks the Welsh Harp Nature Reserve and Reservoir, ideally located for excellent transport links, with Hendon Thameslink providing fast access into Central London.

### Features

- Two Double Bedrooms
- Two Bathrooms
- Lake Facing Balcony
- Secure Parking Space
- Bright and Airy
- Gym & Concierge

# Moorhen Drive, London, NW9



Total area (approx.): 68.8 sq. m (740.1 sq. ft)

Balcony (approx.): 7.1 sq. m (76.8 sq. ft)