



Skeel Library House  
Hampstead  
NW3





1903



TO 2026

## Contents

- The History
- The Home, then and now
- The Library
- The Principal Suite
- The Guest Suite and other bedrooms
- The Pool, Sauna and Gym
- The Location



# The History

Tucked away on the leafy Kidderpore Avenue in Hampstead, the Skeel Library is a hidden chapter of London's rich academic and architectural heritage that reads like a novel. Originally built in 1903 in striking Edwardian Baroque style, the library was the intellectual heart of Westfield College, one of the first institutions in the UK dedicated to higher education for women, especially in the sciences and arts. It became a crucible of scholarly life, where generations of students gathered under soaring ceilings and oak galleries to explore ideas and build futures in a world that once limited their access to learning.

Named in honour of pioneering historian Caroline Skeel, a formidable academic whose legacy loomed large at Westfield, the library stood as a beacon of knowledge and progress in early 20th-century Hampstead.  
in its academic heyday.





Today, Skeel Library House has been lovingly restored in collaboration with Suna Design Studios and reborn as the crown jewel of the Hampstead Manor development. Its dramatic original reading room, complete with mezzanine book galleries and lead framed windows, now forms the heart of a remarkable four bedroom home that seamlessly blends heritage with contemporary living. Every stone and shelf whispers stories of curious minds and spirited discourse, making this iconic building as enchanting in its new life as it was



#### Accommodation

Double-height reception room with original mezzanine gallery

Open plan kitchen and dining area

Principal bedroom suite with dressing room and en-suite

Guest bedroom en-suite with outdoor space

Two further bedrooms, both en-suite

Study / media room

Utility room

Approximate gross internal area: 5,120 sq ft (475.65 sq m).

# The Home, then and now

Exceptional Grade II Listed Edwardian Library Reimagined | Approx. 5,120 sq ft | Hampstead Manor

## Property Description

An exceptional Grade II listed Edwardian residence forming the former Skeel Library, located within the prestigious Hampstead Manor development on Kidderpore Avenue in Hampstead. Originally constructed in 1903 for Westfield College, the building has been sensitively restored and converted to create a remarkable four-bedroom home extending to approximately 5,120 sq ft.

## Skeel Library

The centrepiece of the house is the spectacular double-height library reception room, formerly the original reading room, featuring soaring 4.9 meter high ceilings, full-height windows and the preserved mezzanine book gallery overlooking the principal living space. This impressive room now provides an extraordinary open-plan reception, dining and kitchen area, creating a striking environment for both everyday living and entertaining.

The bespoke kitchen is arranged around a large central island and fitted with integrated appliances, seamlessly connecting with the main reception space. The principal bedroom suite occupies the ground floor and offers a spacious and private retreat, incorporating a generous bedroom, dressing room, study/media area and a luxurious en-suite bathroom.

Further accommodation includes a guest bedroom suite with access to outdoor space, two additional bedrooms, both en-suite, providing flexible space for family living, guests or home working.

Residents of Hampstead Manor benefit from a range of private amenities including landscaped communal gardens, concierge service and access to a luxury wellness centre with swimming pool, gym, sauna and spa facilities.

The property also benefits from two secure underground parking spaces.



## The Library

Reimagined as the heart of the home, this remarkable double-height library forms part of an expansive open plan living space incorporating the kitchen, dining and principal reception areas. A mezzanine gallery lined with bespoke dark wood bookshelves wraps elegantly around the upper level, creating a dramatic reading gallery that overlooks the living space below.

Custom built cabinetry spans the ground floor, thoughtfully styled with curated objects while discreetly concealing the television within the joinery. Restored floor to ceiling Crittall windows flood the room with natural light, illuminating the rich timber finishes and drawing the eye upward to the gallery above.

A striking contemporary chandelier descends through the centre of the space, emphasising the impressive ceiling height and creating a sculptural focal point, while the seating area below offers a relaxed setting within this beautifully interconnected kitchen, dining and living environment.





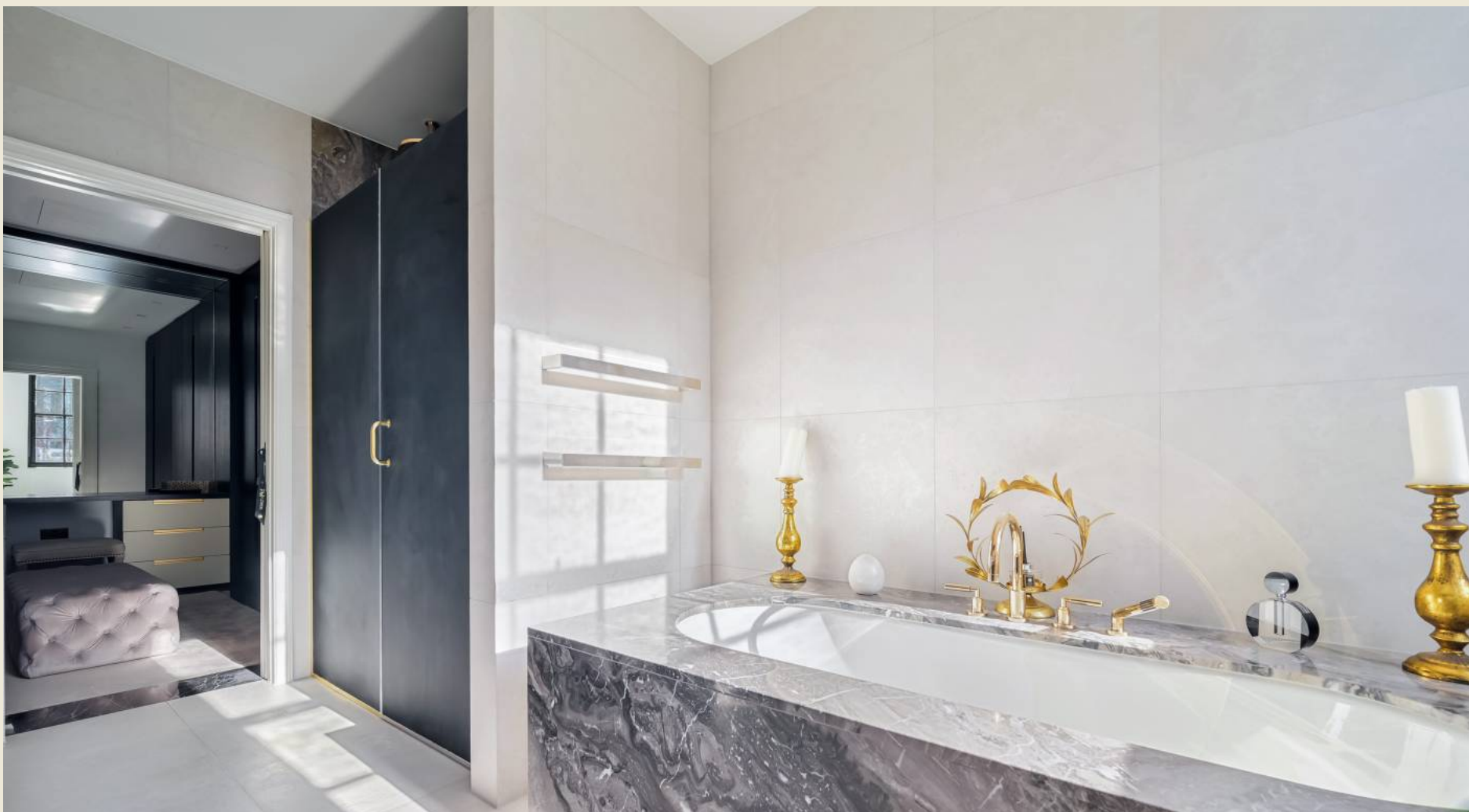
# The Principal Suite

Situated on the ground floor, the principal suite is an impressive and private sanctuary, carefully redesigned to balance comfort with sophistication. Once a large open-plan space, it has been gracefully reconfigured with a statement wall featuring an inset mirror, gently defining the sleeping area while preserving a sense of openness.

This considered layout establishes separate areas for reading, unwinding, and sleeping, all while retaining an airy, expansive atmosphere. The bed is oriented towards the room's beautiful original window, and a bespoke panelled feature wall pays homage to the architectural language of the former library.

The suite is further enhanced by an adjoining office, media snug, and dressing room, forming a luxurious, presidential-inspired retreat. Delicate beading and refined panel details create a seamless sense of continuity and understated elegance throughout.



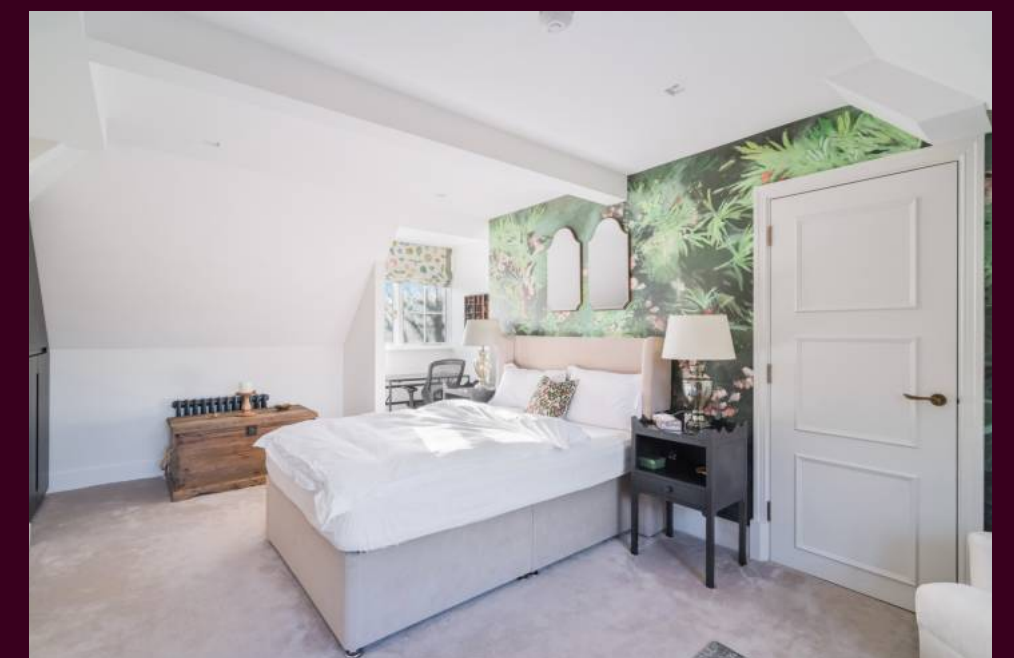


# Guest Accommodation

The home offers a beautifully appointed guest suite alongside additional bedrooms designed with both comfort and elegance in mind.

The guest suite has been styled to provide a private sanctuary for visitors, complete with its own seating area and luxurious en-suite bathroom. Rich textures and calming tones create a welcoming and tranquil atmosphere.

Two additional bedrooms, both en-suite, continue the home's refined aesthetic, each thoughtfully designed with bespoke joinery, elegant finishes and ample storage. These spaces offer flexibility for family living, guests or home working.



# Wellness and Amenities

Residents of Hampstead Manor enjoy access to a collection of exceptional wellness facilities located within the neighbouring Willoughby building, just a short stroll from the property.

These include a beautifully designed 14-metre swimming pool, sauna and hammam, as well as a fully equipped gym and spa experience shower.

Together, these amenities provide a rare opportunity to enjoy hotel-style facilities within the comfort and privacy of a residential development.



## Development & Amenities

Residents of Hampstead Manor enjoy access to private leisure facilities located within the development, including:

14 metre swimming pool

Fully equipped gymnasium

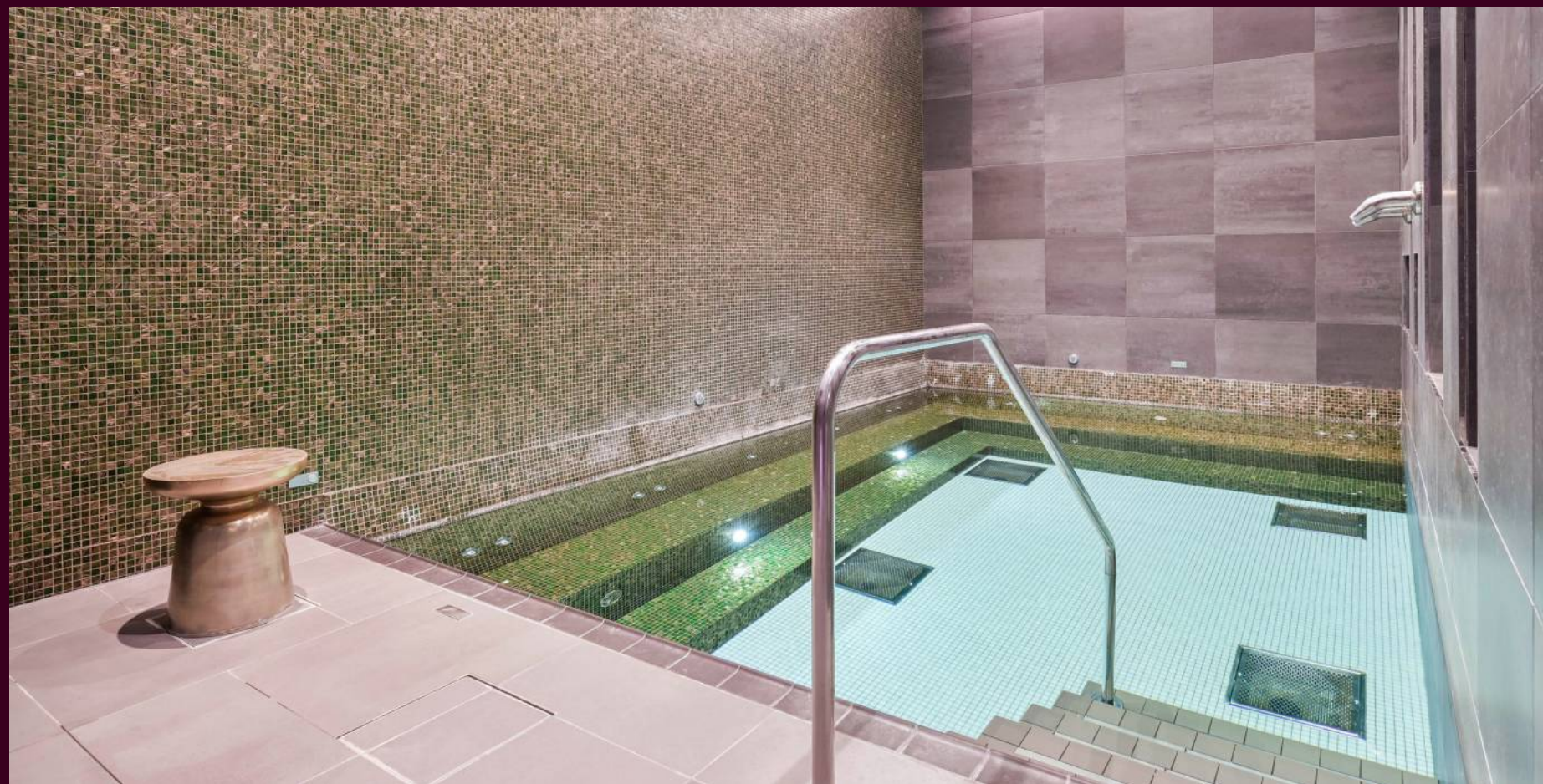
Sauna and hammam

Spa experience shower

Landscaped communal gardens

24-hour concierge service

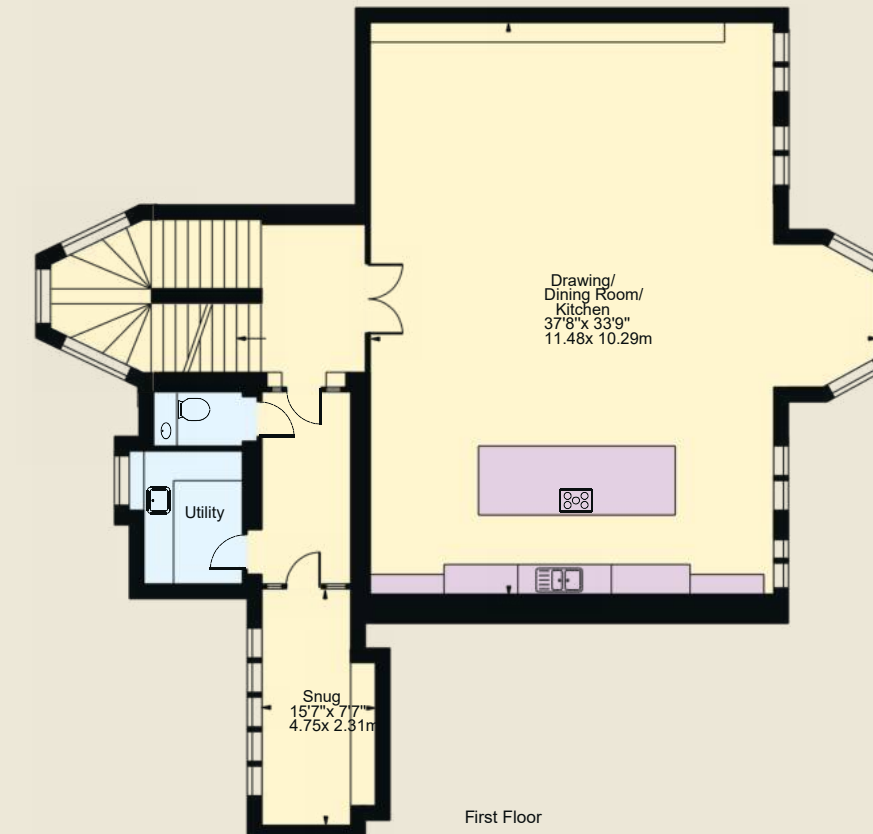
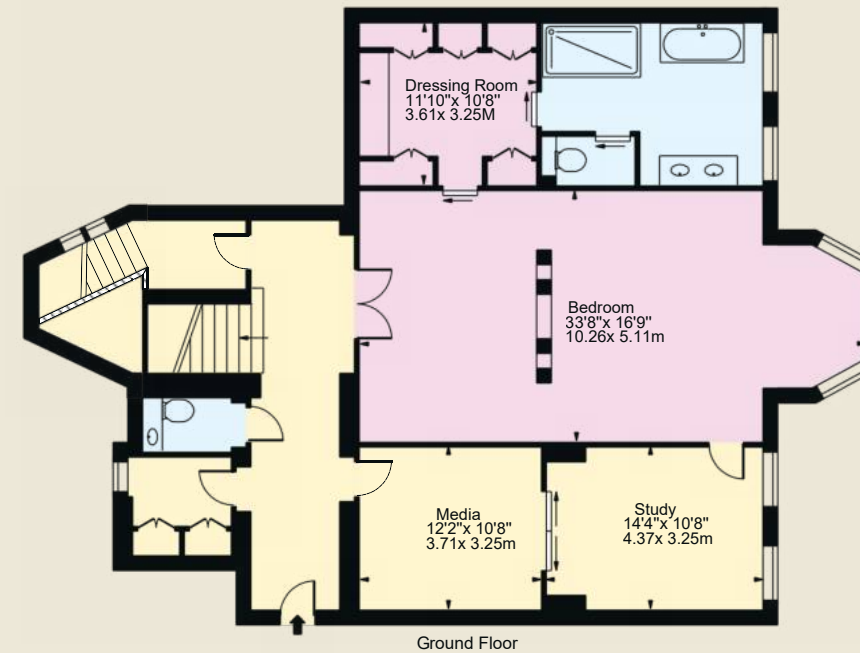
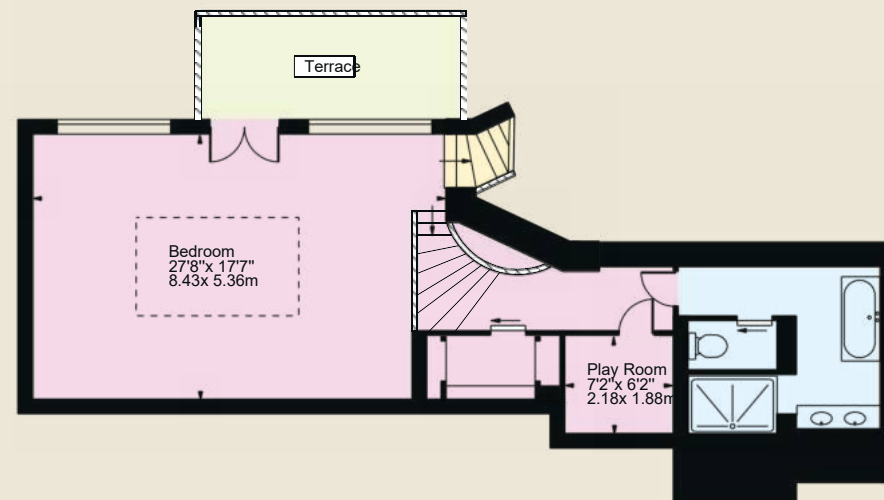
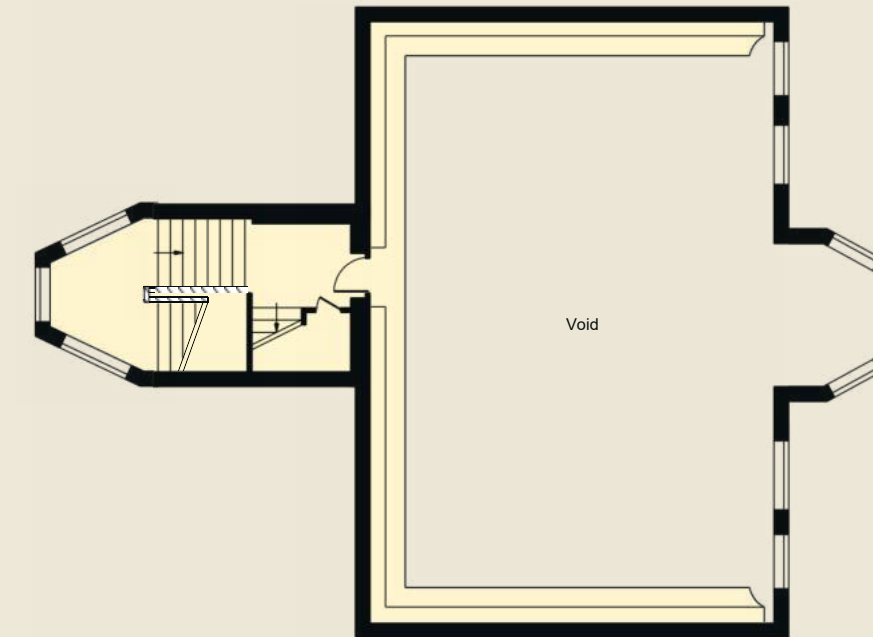
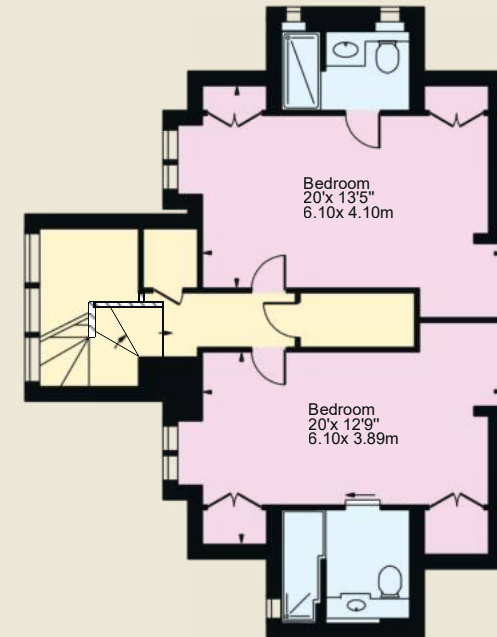
These facilities are located within the neighbouring Willoughby building within the Hampstead Manor estate.



# Skeel Library House, Kidderpore Avenue

Approx. Gross Internal Area  
475.65sqm / 5120sqft

(Excluding Void)



## For Illustration Purposes Only

This Floor Plan Should Be Used As A General Outline For Guidance Only And Does Not Constitute In Whole Or In Part An Offer Or Contract.  
Any Intending Purchaser Or Lessee Should Satisfy Themselves By Inspection, Searches, Enquiries And Full Survey As To The Correctness Of Each Statement.  
Any Areas, Measurements Or Distances Quoted Are Approximate And Should Not Be Used To Value A Property Or Be The Basis Of Any Sale Or Let.

# Key Features

- Grade II listed Edwardian Baroque residence
- Historic library conversion dating from 1903
- Approximately 5,120 sq ft of accommodation
- Spectacular double-height library reception room
- Original mezzanine book gallery
- Four bedrooms
- Concierge and luxury wellness facilities
- Two secure underground parking spaces
- Prestigious Hampstead Manor development





# The Location



Hampstead remains one of London's most desirable residential neighbourhoods, known for its village atmosphere, historic character and exceptional green spaces. Hampstead Village offers a wide selection of independent cafés, restaurants, boutiques and historic pubs, while the open landscapes of Hampstead Heath provide over 800 acres of woodland and parkland. Transport links include Hampstead Underground Station (Northern Line), providing convenient access to the West End, the City and beyond.

# Terms

Asking Price - £6,500,000

Local Authority - Camden

Tenure- Leasehold, 989 years remaining

## Contact

Craig Draper

Draper London

T: 0203 143 1900

M: 0777 174 2182

E: [Craig.draper@draperlondon.com](mailto:Craig.draper@draperlondon.com)



