

Parkfield Crescent

Ruislip • Middlesex • HA4 0RD
Offers In Excess Of: £500,000



coopers
est 1986

Parkfield Crescent

Ruislip • Middlesex • HA4 0RD

Offered to the market with no onward chain, this well-presented three-bedroom semi-detached family home is situated in a sought-after residential location on Parkfield Crescent, South Ruislip. Providing approximately 796 sq. ft. (74 sq. m.) of accommodation, together with a detached garage and private rear garden, the property offers excellent potential for families, first-time buyers, and investors alike. The ground floor comprises a welcoming entrance hall leading to a bright and spacious living room with a charming bay window overlooking the front aspect. To the rear, there is a separate dining room providing an ideal space for entertaining, which opens into a light-filled sun room enjoying views over the garden. The fitted kitchen offers a practical layout with access to both the dining area and rear garden. On the first floor, the property benefits from three bedrooms, including two well-proportioned double bedrooms and a further single bedroom that would also make an ideal home office or nursery. A family bathroom completes the first-floor accommodation. Externally, the property enjoys a private rear garden with a useful detached garage, offering additional storage or workshop space. To the front, there is off-street parking.

CHAIN FREE

SEMI DETACHED HOUSE

THREE BEDROOMS

FAMILY BATHROOM

THROUGH LOUNGE

GARAGE

PRIVATE GARDEN

OFF STREET PARKING

QUIET ROAD

796 SQ.,FT. TOTAL

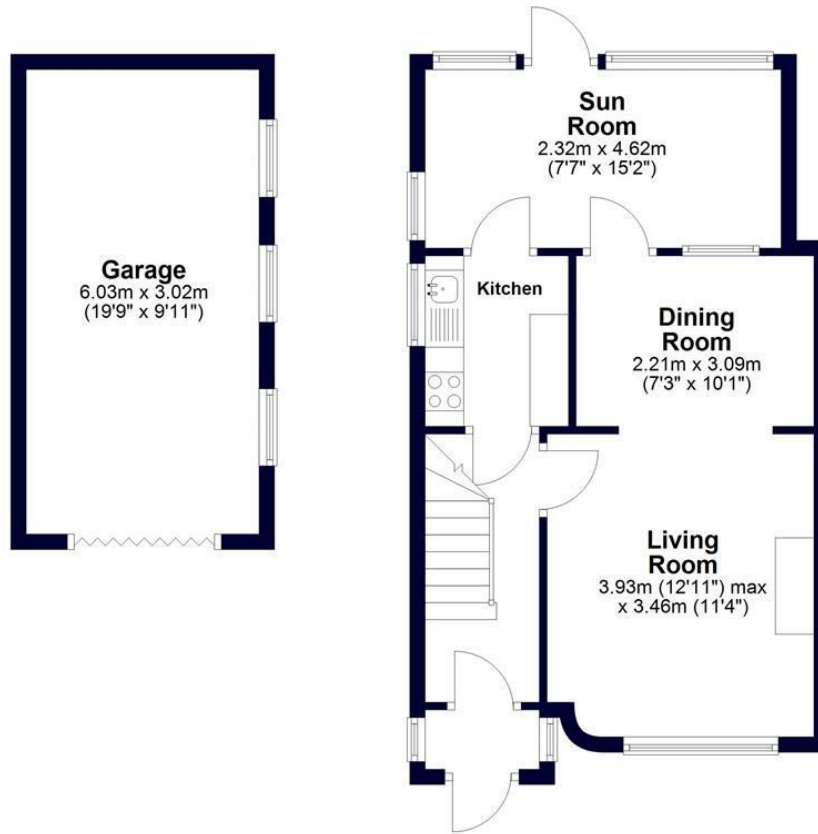
These particulars are intended as a guide and must not be relied upon as statements of fact. Your attention is drawn to the Important Notice on the last page.





Ground Floor

Approx. 43.5 sq. metres (468.4 sq. feet)
(excluding Garage)



First Floor

Approx. 30.4 sq. metres (327.6 sq. feet)



Total area: approx. 74.0 sq. metres (796.0 sq. feet)

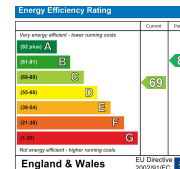


Whilst every effort has been made to ensure the accuracy of this floor plan, measurements of doors, windows, rooms and other items are approximate and no responsibility is taken for any errors. This plan is for illustrative purposes only and should be used as such by any prospective purchaser.
©Property Pot. Produced on behalf of Coopers Residential.



71 Victoria Road, Ruislip Manor,
Middlesex, HA4 9BH
ruislipmanor@coopersresidential.co.uk

CoopersResidential.co.uk



Important Notice: These particulars, whilst believed to be accurate are set out as a general outline only for guidance and do not constitute any part of an offer or contract. Intending purchasers should not rely on them as statements or representation of fact, but must satisfy themselves by inspection or otherwise has the authority to make or give any representation or warranty in respect of the property.