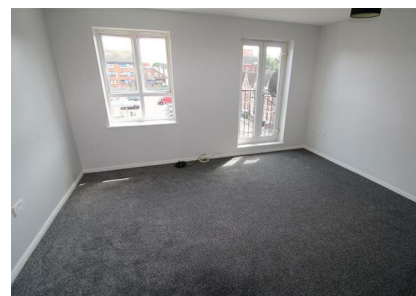


Flat 38 Marlborough Court Grove Road, Luton, Bedfordshire,
LU1 1RW
£950 PCM

ROBINSONS



AVAILABLE END OF JUNE A SECOND FLOOR ONE BEDROOM FLAT IN TOWN CENTRE LOCATION WITH GATED UNDERGROUND PARKING.

Available June a second floor one bedroom flat in Luton Town Centre a short walk from the Station. ACCOMODATION COMPROMISES: Entrance hall, living room open plan with kitchen, bathroom with bath and shower, large bedroom with wardrobes.



20 West Street
Dunstable
Bedfordshire
LU6 1SX
01582 661112
sales@robinsons-estates.co.uk
<https://www.robinsons-estates.co.uk>



| Energy Efficiency Rating | | Current | Potential |
|--|--|----------------------------|-----------|
| <i>Very energy efficient - lower running costs</i> | | | |
| (92 plus) A | | | |
| (81-91) B | | | |
| (69-80) C | | | |
| (55-68) D | | | |
| (39-54) E | | | |
| (21-38) F | | | |
| (1-20) G | | | |
| <i>Not energy efficient - higher running costs</i> | | | |
| England & Wales | | EU Directive 2002/91/EC | |