



Stewart Place, Station Road, Ware SG12 9UN

TO LET £1,395

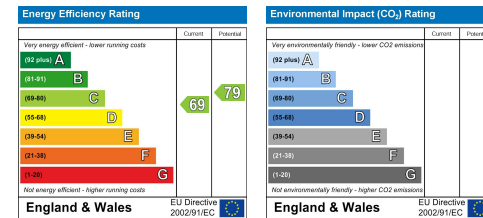
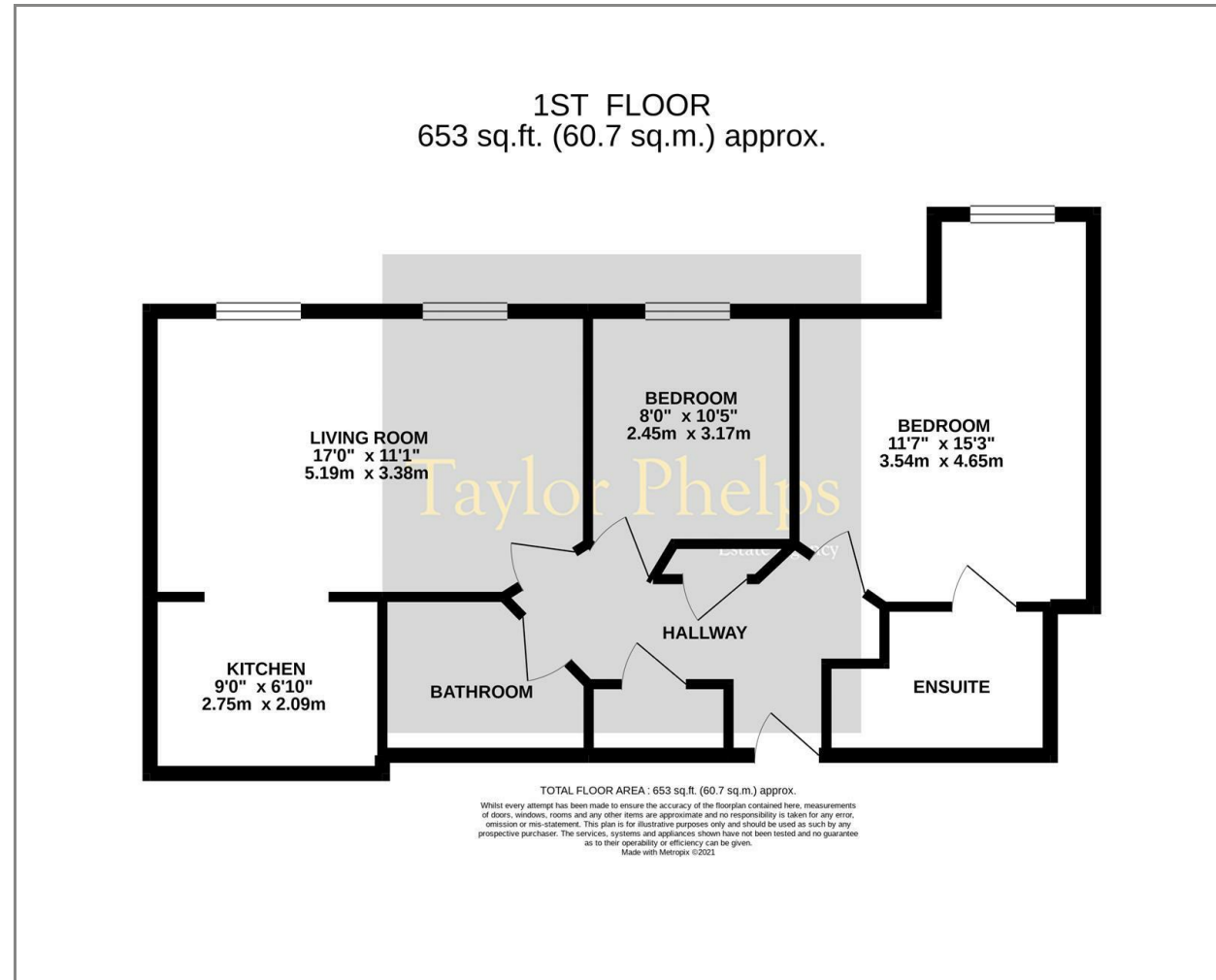
Taylor Phelp's

Estate Agency



Taylor Phelps

Taylor Phelps are pleased to offer this larger style two bedroom apartment with two bathrooms positioned within this modern development close to ware high street and station which serves both Hertford East and London Liverpool Street! This apartment further benefits from gated residents parking!



These particulars, whilst believed to be accurate are set out as a general outline only for guidance and do not constitute any part of an offer or contract. Intending purchasers should not rely on them as statements of representation of fact, but must satisfy themselves by inspection or otherwise as to their accuracy. No person in this firm's employment has the authority to make or give any representation or warranty in respect of the property.

01920 459000

hello@taylorphelps.co.uk

5 Frenchs Yard, Amwell End, Ware, Hertfordshire, SG12 9HP

www.taylorphelps.co.uk

