



Angel Mews, SW15

£645,000

Dexters



Angel Mews, SW15

A two-bedroom terraced house in a very pretty, gated mews development tucked away behind the cobbled Roehampton High Street. The property has been recently redecorated, the ensuite bathroom replaced, and also offers off-street parking and a large south-facing garden. Further features include a double garager. It is also worth highlighting that, subject to the required consents, one could reconfigure the internal layout and may also be able to further extend the property or even convert the garage.

On the ground floor, there is a well-proportioned entrance hall with a guest cloakroom and the second bedroom, which provides access to the garden. On the first floor, there is a large, bright reception room, a kitchen, and the main bedroom, complete with an en-suite bathroom.

Angel Mews is a secure development very close to the open spaces of both Putney Heath and the glorious Richmond Park. The property also benefits from excellent transport links to Kingston, Putney and Barnes and easy access to Queen Mary Hospital.

(*These photos have been virtually staged, please rely on the floorplan and your own measurements regarding exactly how furniture would fit in each room.)

Features

- 1084 sq ft
- South Facing Garden
- Two Bedrooms
- Two Two Bathrooms
- Garage & Off Street Parking
- Garage Conversion SSTP

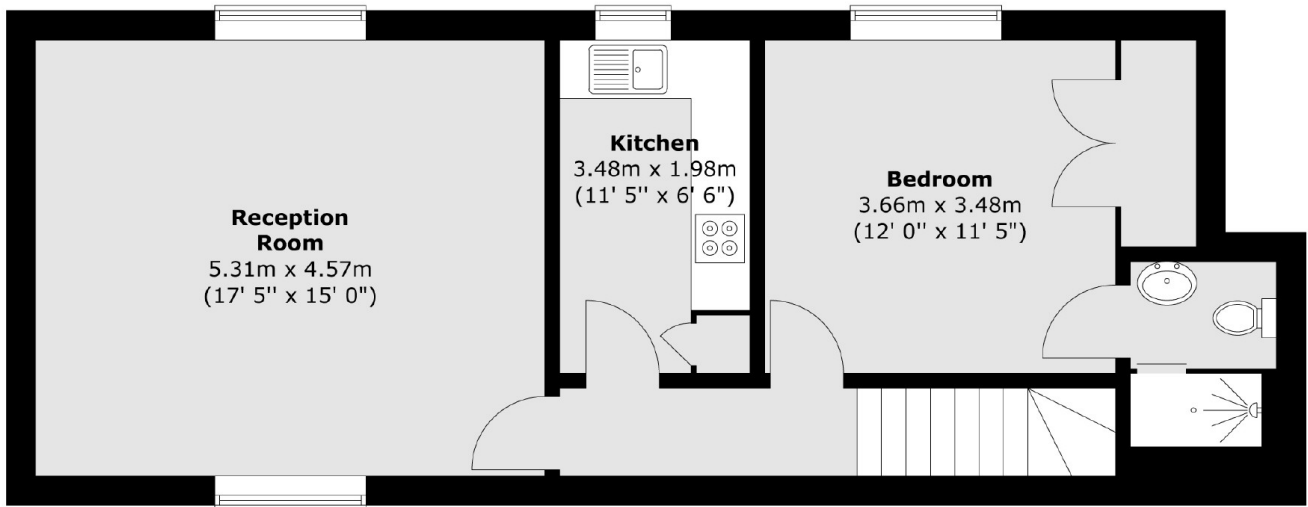






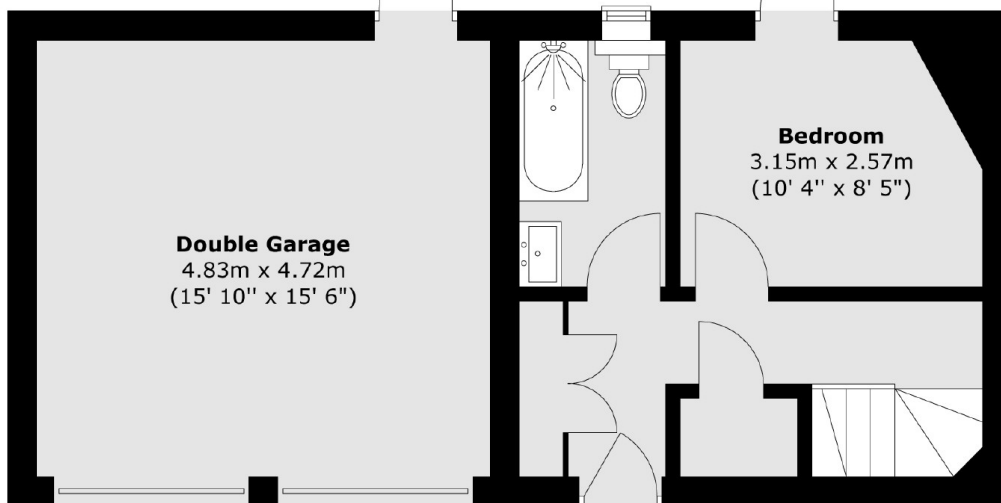
Angel Mews, London, SW15

First Floor



To
Garden

Ground Floor



Total area (approx.) : 107.7 sq. m (1084 sq. ft)