



 Steven Oates

Bircherley Green, Hertford
£1,600 pcm

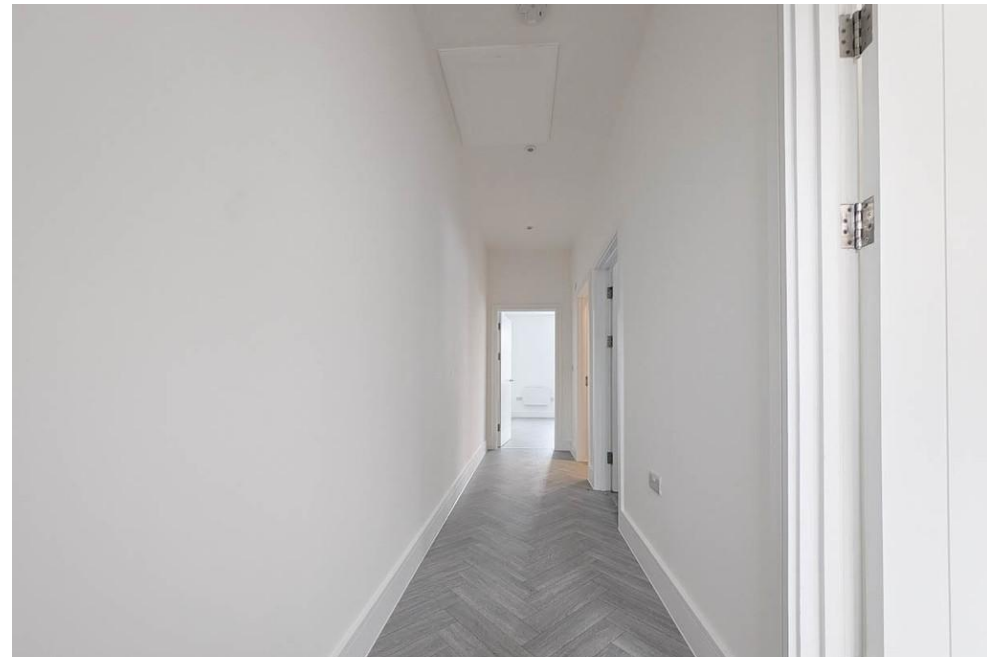
Situated in the heart of Hertford town centre, this well-presented apartment offers modern and convenient living just moments from Hertford East Station, local amenities, restaurants and riverside walks. The accommodation comprises a bright and spacious open-plan living/kitchen area, a modern fitted kitchen with integrated appliances, two generously sized bedrooms and a contemporary bathroom suite. The property benefits from large windows allowing plenty of natural light throughout and is neutrally decorated to a modern standard. Bircherley Green is perfectly positioned within walking distance of Hertford's popular bars, cafés and shopping facilities, whilst also offering easy access to the A10 and surrounding road links. Available now. Unfurnished.





Score	Energy rating	Current	Potential
92+	A		
81-91	B		
69-80	C	70 C	70 C
55-68	D		
39-54	E		
21-38	F		
1-20	G		





Whilst we endeavour to make our sales particulars fair, accurate and reliable, they are only intended as a general guide to the property. Measurements and distances are approximate. These particulars do not form part of any offer or contract. If there are important matters that are likely to affect your decision to buy, please contact us before viewing the property. Please note that we have not tested the services, equipment or appliances in this property, accordingly, we advise prospective buyers to commission their own survey or service reports before finalising any offer to purchase.