



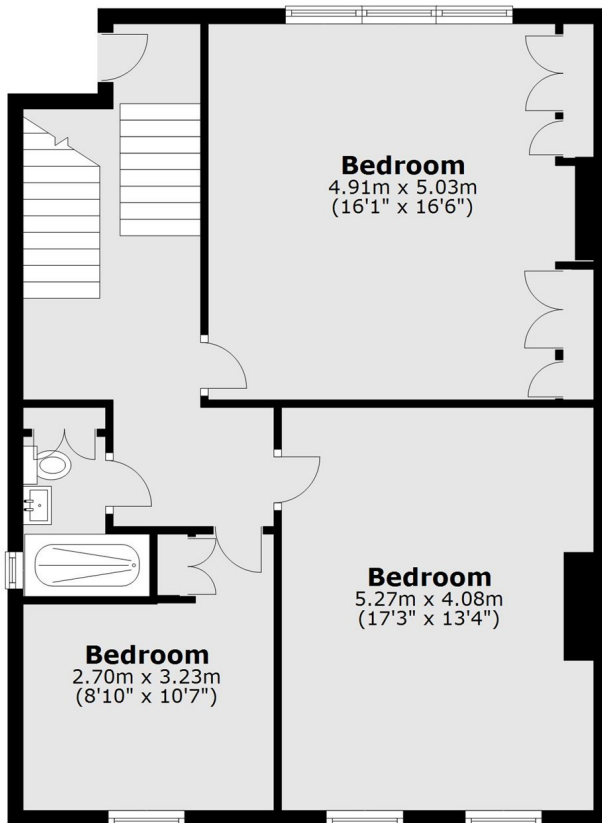
## Grange Park, W5

£692 pw (£3,000 pcm)

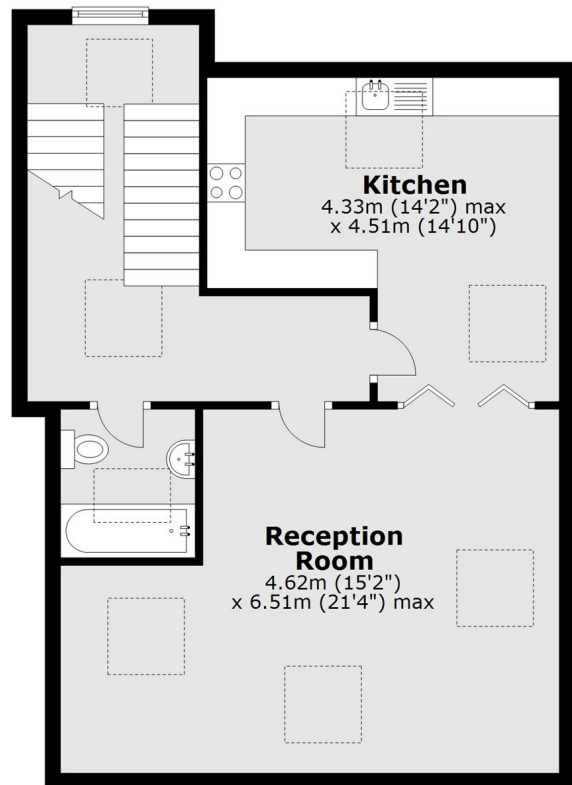
This spacious three bedroom flat offers almost 1,500 sq ft and occupies the top two floors of a well-maintained detached period building. The property features two modern bathrooms, a semi-open plan kitchen and a bright reception room.

Grange Park is close to Ealing Broadway and Ealing Common stations, shops and amenities and the open spaces of Ealing Common.

## Third Floor



## Fourth Floor



Total area: approx. 138.2 sq. metres (1487.1 sq. feet)

Robertson Smith & Kempson Ealing Lettings  
1 The Broadway,  
London, W5 2NT  
020 8840 7885  
ealinglettings@robertsonsmithandkempson.co.uk

Energy Rating: D. We aim to make our particulars both accurate and reliable. However they are not guaranteed; nor do they form part of an offer or contract. If you require clarification on any points then please contact us, especially if you're traveling some distance to view. Please note that appliances and heating systems have not been tested and therefore no warranties can be given as to their good working order.