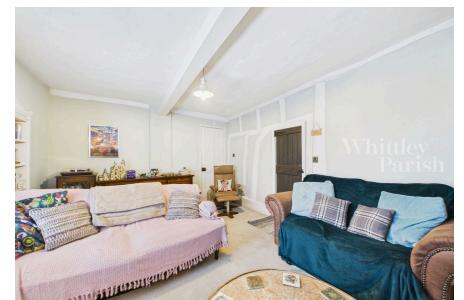
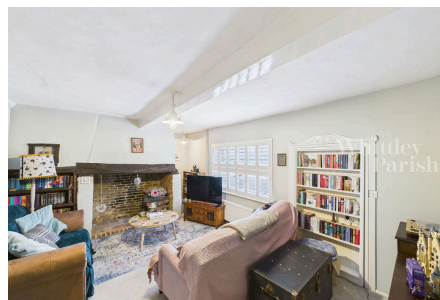


The Street, Dickleburgh

Guide Price £325,000 - £350,000

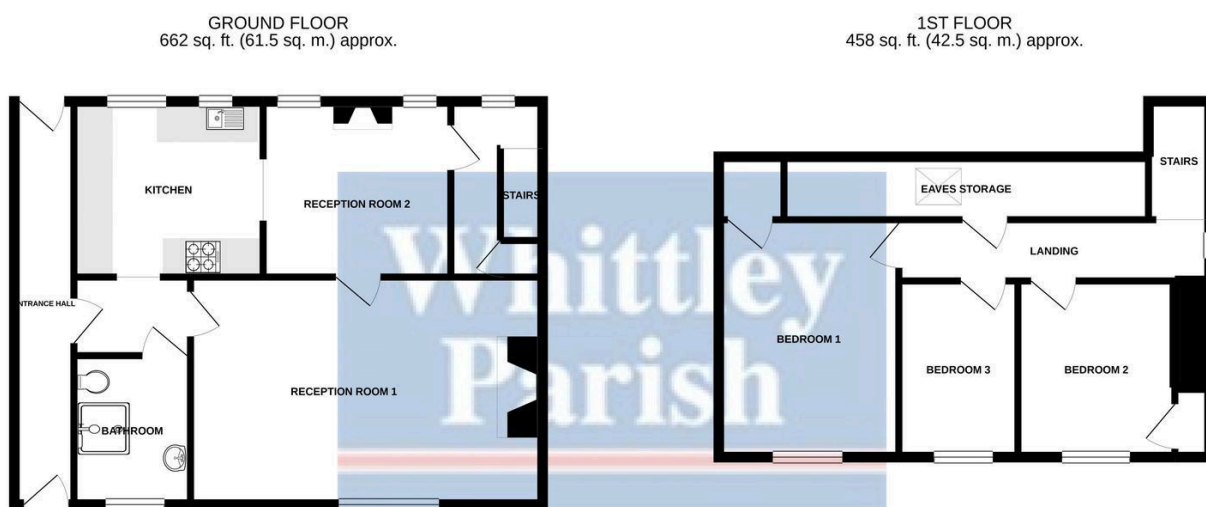
3 1 2



An immaculately presented period cottage occupying a central within Dickleburgh.

Key Features

- Guide Price £325,000 - £350,000
- Large cottagey gardens
- Central village position
- Freehold
- Grade II listed
- Beautifully & immaculately presented throughout
- Charm & character
- Council Tax Band C



TOTAL FLOOR AREA: 1120 sq. ft. (104.1 sq. m.) approx.

Whilst every attempt has been made to ensure the accuracy of the floorplan contained here, measurements of doors, windows, rooms and any other items are approximate and no responsibility is taken for any error, omission or mis-statement. This plan is for illustrative purposes only and should be used as such by any prospective purchaser. The services, systems and appliances shown have not been tested and no guarantee as to their operability or efficiency can be given.

Made with Metropix ©2020