

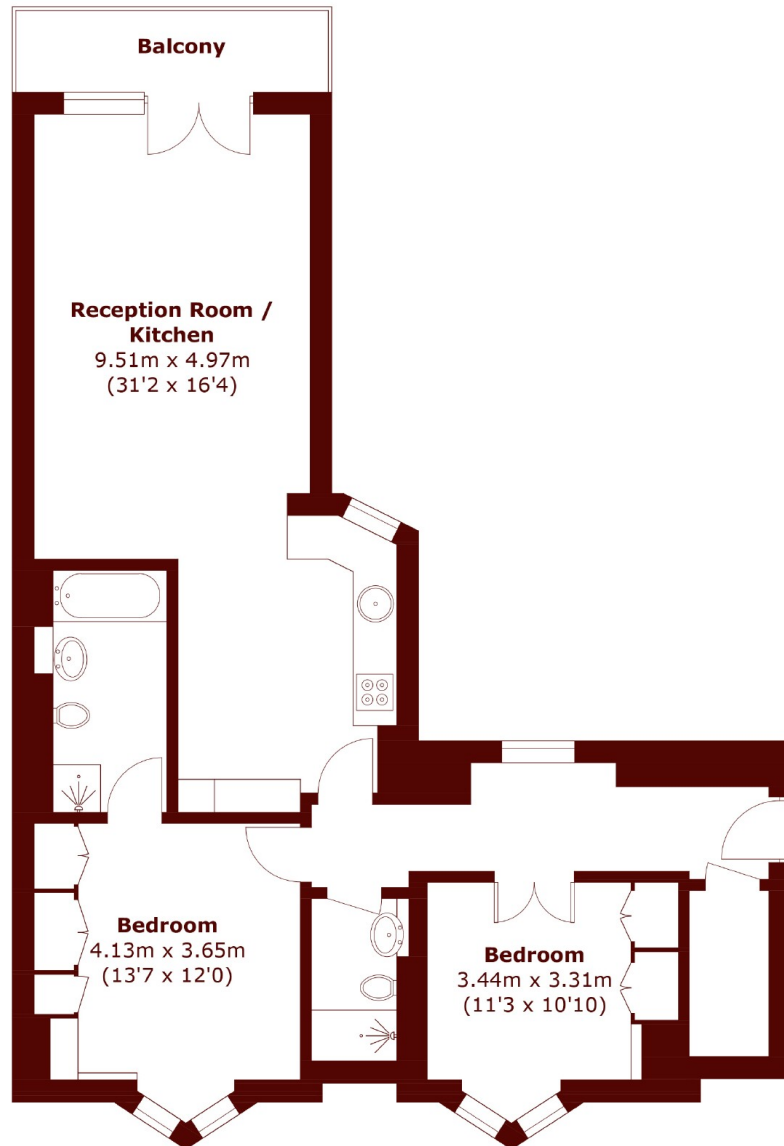


Chiltern Street, W1U

£1,300,000



- Two double bedrooms
- Two bathrooms
- Reception room
- Kitchen
- West facing balcony
- 24 hour portage



Sixth Floor

Total area (approx.): 81 sq. m (871.9 sq. ft)
Balcony : 4.8 sq. m (51.7 sq. ft)

Marsh & Parsons Marylebone & Mayfair

94 Baker Street, London,
W1U 6FZ
020 7935 1775