



Tavistock Place, WC1H

£635,000

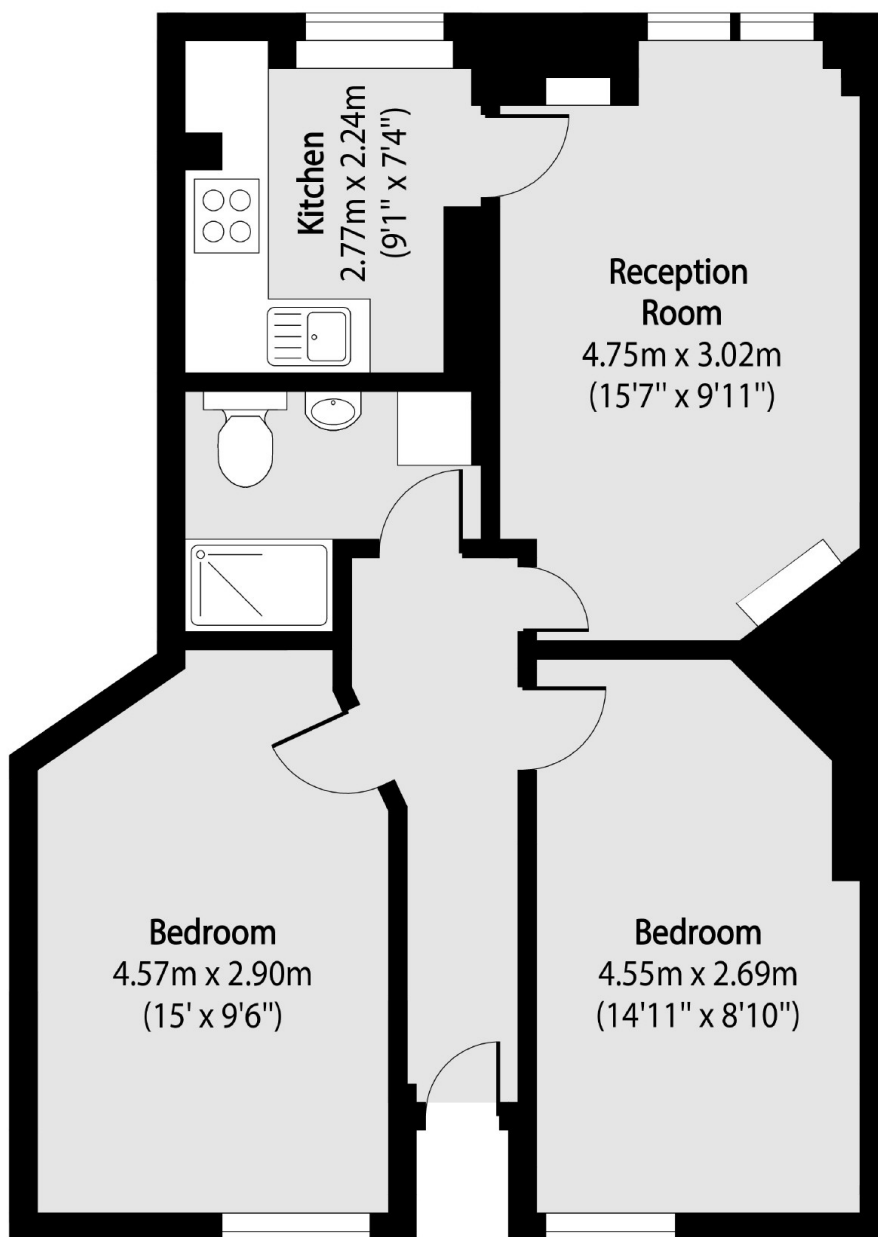
Set within a well-maintained red brick mansion block with lift access, this well presented two double bedroom home is in excellent condition and with no onward chain. The property includes a long lease, low service charges, and a separate well equipped kitchen, making it an ideal purchase for both homeowners and investors alike.

Knolly's House is located on Tavistock Place in the heart of Bloomsbury, offering excellent access to transport links, the vibrant West End, and King's Cross St Pancras for national and international travel. The area is renowned for its historic architecture, leafy garden squares, world-class universities, and cultural attractions, while also providing a diverse range of shops, cafés, and restaurants.

Features

- Two Double Bedrooms
- Separate Kitchen
- Long Lease
- Period Features
- Low Service Charges
- No Onward Chain

Tavistock Place, London, WC1H



Total area (approx): 56.57 sq m (609 sq. ft)