



## Jerningham Road, SE14

£500,000

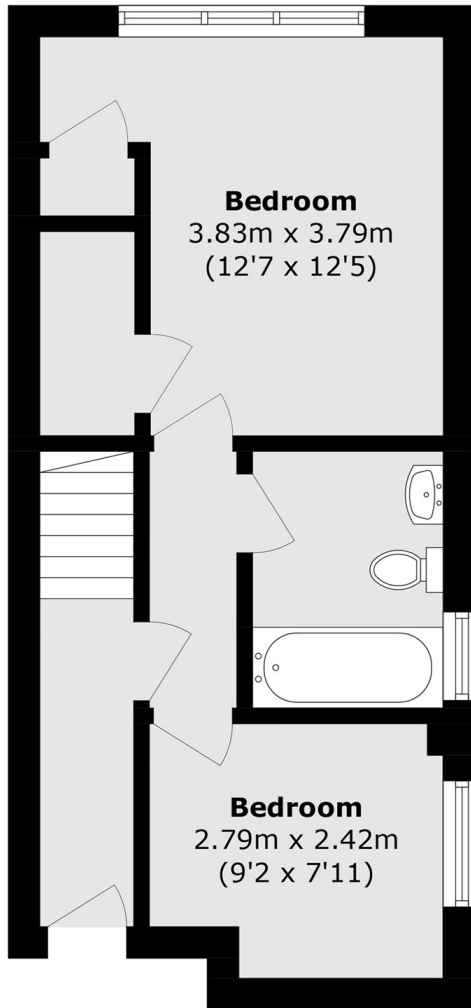
Located on one of the most sought-after streets in New Cross, this beautifully presented split level two bedroom flat offers an exceptional blend of period charm and contemporary living. Set within an elegant Victorian townhouse on Jerningham Road, with well-proportioned interiors.

Jerningham Road is one of the prime roads on Telegraph Hill. New Cross Gate station is around a 5 minute walk. Further amenities include Coffee Shops, bakeries and cafe's as well as Sainsbury's. Goldsmiths, University of London and Haberdasher Hatcham College are just a few of the nearby educational facilities.

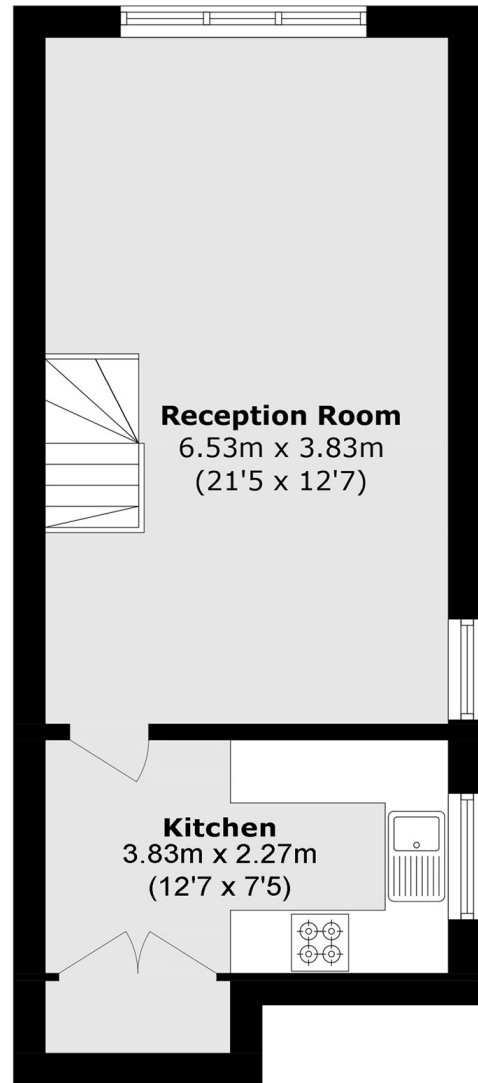
### Features

Split Level Apartment  
Two Bedrooms  
Excellent Condition  
Throughout  
Close To Transport  
Newly Refurbished  
No Onward Chain

Jerningham Road,  
London, SE14



**First Floor**



**Second Floor**

Total area (approx.): 68.7 sq. m (739.4 sq. ft)